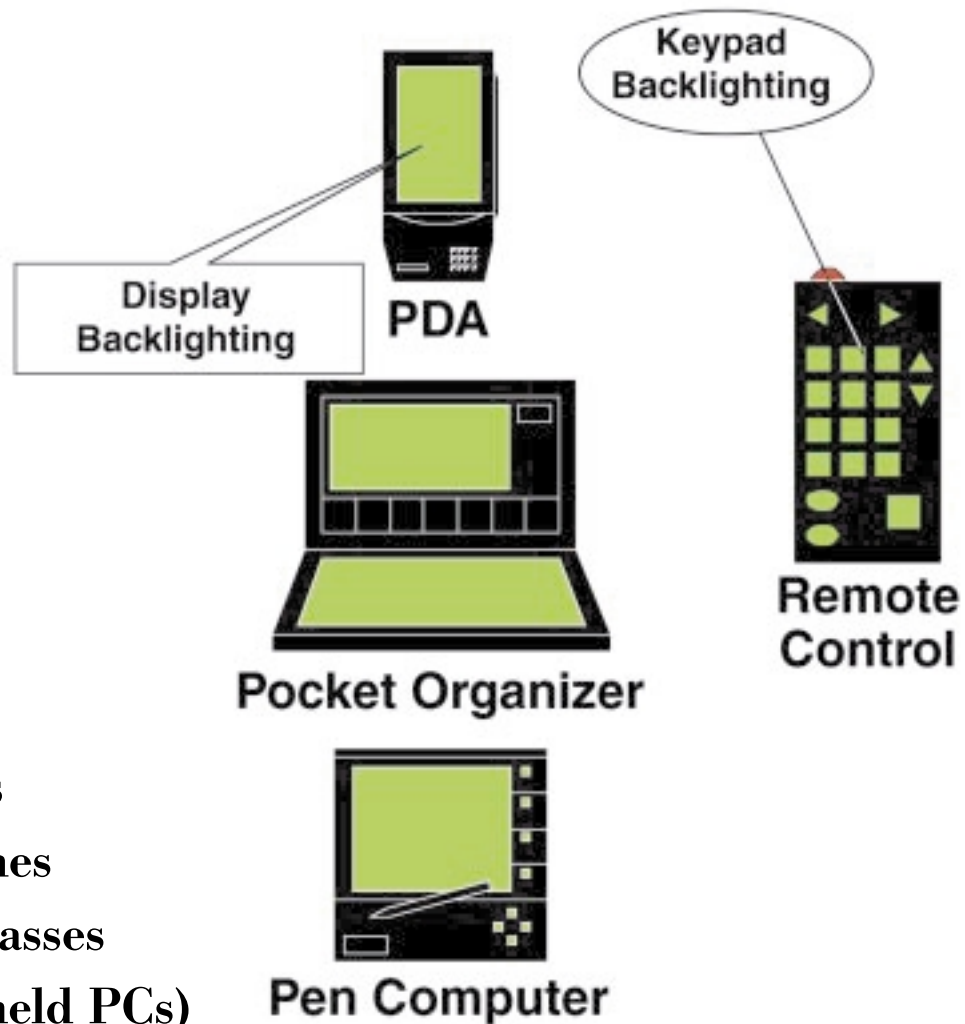


Electroluminescent Lamp Drivers



EL Lamp Applications



- ◆ Pagers
- ◆ Caller ID
- ◆ Appliances
- ◆ Telephones
- ◆ Thermostats
- ◆ Weight Scales
- ◆ Cellular Phones
- ◆ Digital Compasses
- ◆ HPCs (Handheld PCs)
- ◆ Temperature Monitors
- ◆ Automotive Dashboards
- ◆ GPS Handheld Receivers
- ◆ PDAs (Personal Digital Assistants)
- ◆ Watches and Alarm Clocks
- ◆ Test and Medical Equipment
- ◆ TV/VCR/Audio/Cable Box Remote Controllers

IMP, Inc. - Company Profile

IMP, Inc. designs, manufactures and markets standard-setting analog integrated circuits and specialty analog wafer foundry processes for data communications interface and power management applications in computer, communications and control systems. IMP products are sold through a worldwide network of sales representatives and distributors.

Company Facilities

IMP headquarters and ISO 9001 certified wafer fabrication and test facility are located in San Jose, California. Product development centers are in Pleasanton, California, and Lee, New Hampshire. Sales offices are in San Jose, California; Dallas, Texas; West Kingston, Rhode Island and Singapore.

Principal Markets

Data Communications Interface – Internal system data communications circuits, including single-ended (SE), low voltage differential (LVD) and multimode (SE/LVD) Small Computer Systems Interface (SCSI) terminators.

Power Management – Circuits that generate, distribute, protect and manage the thermal and power consumption characteristics of hand-held, portable and battery-powered systems. Portable computers, mobile and wireless communication devices and battery-powered medical systems are typical market segments. Example products include electroluminescent lamp drivers, microprocessor supervisors, voltage monitors, low dropout voltage regulators, and high-frequency switching converters.

Wafer Fabrication and Manufacturing Services

High-volume, analog and mixed-signal wafer foundry services on low-power, high-voltage (100V and above), CMOS, BiCMOS, and EEPROM processes, including turnkey packaging and test capabilities. Fabrication services include database production using IMP standard processes, and porting of customer-owned technology.

For More Information

Visit the IMP web site at www.impweb.com; email info@impinc.com or contact IMP headquarters at 408.432.9100/800-438-3722.

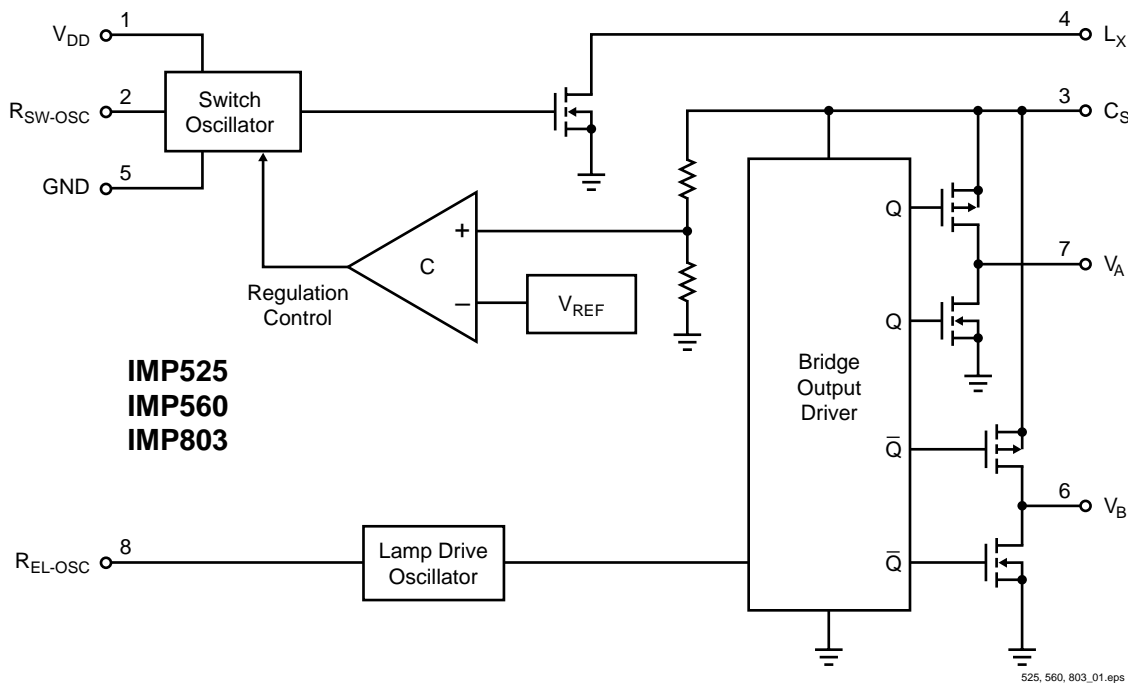
Table of Contents

EL Driver Product Line Summary	iv
<i>EL Lamp Driver Development Kits</i>	vi
Data Sheets	
<i>IMP525</i>	1
<i>IMP527</i>	7
<i>IMP528</i>	13
<i>IMP560</i>	17
<i>IMP803</i>	23
Die Specifications	
<i>IMP525 - Die Specifications</i>	31
<i>IMP527 - Die Specifications</i>	32
<i>IMP528 - Die Specifications</i>	33
<i>IMP560 - Die Specifications</i>	34
<i>IMP803 - Die Specifications</i>	35
Application Notes	
<i>AN1 - IMP803 Evaluation Board</i>	37
<i>AN4 - EL Driver Demonstration Boards</i>	45
Package Information	47
Tape and Reel Specifications	48
IMP Sales Offices, Representatives and Distributors	51
Map to IMP - San Jose, CA, USA	56
Quality at IMP - Our Policy	57
Power Management Products	59
<i>μP Supervisor Products</i>	59-60
<i>USB Power Switches</i>	60
Sample Request Form	Last Page

IMP Electroluminescent Lamp Drivers

IMP electroluminescent lamp drivers incorporate four EL lamp driving functions on-chip. These are the boost switch-mode power supply, its high-frequency oscillator, the high-voltage H-bridge lamp driver and its low-frequency oscillator. Few external components are needed: one inductor, one diode, one capacitor and two resistors. The resistors allow independent adjustment of boost converter frequency and EL lamp drive frequency. Adjustable lamp drive frequency allows control over lamp color and power dissipation. All devices can be disabled for power saving.

All devices are available in chip form and small MicroSO and SO packages. Tape and reel shipment is available without additional cost.



IMP525: Single Cell Battery Powered Electroluminescent Lamp Driver/Inverter

The IMP525 Electroluminescent (EL) lamp driver is designed for systems that must operate down to 1V and below. The input supply voltage range is 0.9V to 2.5V. Typical output lamp drive voltage is 112V peak-to-peak. EL lamps of up to 6nF capacitance can be driven to high brightness.

A disable mode puts the chip into a low current-drain state. When disabled, quiescent current drops to 1 μ A typical with a V_{DD} of 1.5V. Connecting R_{SW} , the oscillator frequency setting resistor, to ground, can disable the chip. A disable pad, accessible only on the die, can also be used to disable the driver (active low). An internal circuit shuts down the switching regulator when the lamp drive voltage exceeds 112V peak-to-peak. This conserves power and extends battery life.

Key Features

- ◆ Wide operating voltage range - from 0.9V to 2.5V
- ◆ Simple design requires few passive components
- ◆ 112V peak-to-peak typical AC output voltage
- ◆ Adjustable output frequency controls lamp color and power consumption
- ◆ Adjustable converter frequency minimizes circuit power consumption
- ◆ Disable mode extends battery life
- ◆ Disable current 1 μ A typical
- ◆ Compact MicroSO package and die option
- ◆ Same pinout as IMP803

IMP560: Power Efficient EL Lamp Driver

The IMP560 is designed for systems with modest EL lamp drive voltage requirements. It is ideal for low ambient light applications or where small lamps are used. With just one-half the inductor current of the IMP803, the IMP560 reduces system power consumption and extends battery life. Input supply voltage range is 2.0V to 6.5V and quiescent current is a low 420µA. Typical EL lamp drive voltage is 120V peak-to-peak.

An internal circuit shuts down the switching regulator when the lamp drive voltage exceeds 120V peak-to-peak. This conserves power and extends battery life.

A disable mode puts the chip into a low current drain mode. With a 3.0V supply, quiescent current drops to 200nA maximum, 50nA typical.

Key Features

- ◆ 120V peak-to-peak typical AC output voltage
- ◆ Low input current (w/inductor current).....12mA
- ◆ Low disabled input current.....50nA
- ◆ Wide operating voltage range - from 2.0V to 6.5V
- ◆ Simple design requires few passive components
- ◆ Adjustable output lamp frequency controls lamp color and power consumption
- ◆ Adjustable converter frequency for minimum power consumption
- ◆ IMP803 pin compatible
- ◆ MicroSO package option

IMP803: High-Voltage EL Lamp Driver

The IMP803 drives EL lamps of up to 30nF capacitance to high brightness. EL lamps with capacitance greater than 30nF can be driven but will be less bright. The typical regulated output voltage that is applied to the EL lamp is 180V peak-to-peak.

The IMP803 operates over a 2.0V to 6.5V supply voltage range. A regulated, low-power source can supply the low quiescent current of the IMP803. The inductor may be driven from an independent, unregulated supply voltage in dual supply applications. An internal circuit shuts down the switching regulator when the lamp drive voltage reaches 180V peak-to-peak. This conserves power and extends battery life.

Key Features

- ◆ Low Power: 420µA typical V_{DD} current
- ◆ Wide operating voltage range - from 2.0V to 6.5V
- ◆ 180V peak-to-peak typical AC output voltage
- ◆ Large output load capability - drive lamps with more than 30nF capacitance
- ◆ Adjustable output lamp frequency for control of lamp color, lamp life, and power consumption
- ◆ Adjustable converter frequency to minimize power consumption
- ◆ Device can be Enabled/Disabled
- ◆ Low quiescent current - 20nA (disabled)
- ◆ High-Voltage CMOS Process
- ◆ MicroSO package option

EL Lamp Driver Product Summary Table

Part	Input Voltage Range (V)	Packages	Low Power Disable Mode	Typical Output Voltage (V _{PP})	Adjustable Lamp Drive and Boost Frequency	Regulated Output Voltage
IMP525	0.9 to 2.5	MicroSO & SO	Yes	112	Yes	Yes
IMP527	0.9 to 2.5	MicroSO & SO	Yes	180	Yes	Yes
IMP528	2 to 6.5	MicroSO & SO	Yes	220	Yes	Yes
IMP560	2 to 6.5	MicroSO & SO	Yes	120	Yes	Yes
IMP803	2 to 6.5	MicroSO & SO	Yes	180	Yes	Yes

All devices are available in die form.

ELD/B_106

EL Lamp Driver Development Kits

Several demonstration boards and evaluation kits are available to reduce time-to-market. The kits are available by calling IMP Customer Service at 408.432.9100.

Item	Device/Package	Description
IMP803EV1	IMP803LG	Evaluation board. Has all components plus battery and lamp.
IMPxxxDBM	Any MicroSO	Development board. For evaluating IC sample(s) in-circuit.
IMPxxxDBS	Any SO	Development board. For evaluating IC sample(s) in-circuit.
IMPELD003	Any SO	Evaluation board with pin jacks for part changes. No R, C, L or battery.

Note: "xxx" denotes any driver; 525, 527, 528, 560 or 803.

ELD/B_105

Electroluminescent Lamp Applications and Benefits

Liquid Crystal Displays (LCDs) must be lighted for viewing in darkness or low ambient light conditions. Typically, light is projected forward from the back of the LCD display. EL lamps are popular backlights for liquid crystal displays and keypads because EL lamps are flexible, lightweight, thin, vibration and impact resistant, and can be shaped into small, complex or irregular forms. EL lamps evenly light an area without creating "bright-spots".

Since EL lamps typically consume much less current than incandescent bulbs or light emitting diodes (LEDs), their low power consumption, low heat generation and flexibility make them ideal for battery powered portable applications.

EL lamp backlighting applications include: keyless entry systems; audio/video equipment remote controllers; PDA keyboards and displays; timepieces and watches; LCD displays in cellular phones, pagers, and handheld Global Positioning Systems (GPS); face illumination for instrumentation; assistance lighting for buildings; and decorative lighting for sign-displays and merchandising displays.

Typical EL Lamp Applications

- ◆ PDAs
- ◆ Safety illumination
- ◆ Portable instrumentation
- ◆ Battery-operated displays
- ◆ LCD modules
- ◆ Toys
- ◆ Automotive displays
- ◆ Cellular phones
- ◆ Night lights
- ◆ Audio and TV remote control units
- ◆ Panel meters
- ◆ Pagers
- ◆ Clocks and radios
- ◆ Portable GPS receivers
- ◆ Handheld computers
- ◆ Caller ID

EL Driver Product Updates

New product information and application notes can be obtained by visiting the IMP web site at www.impweb.com or by sending email to info@impinc.com.

POWER MANAGEMENT

Single Cell Battery Powered Electroluminescent Lamp Driver/Inverter

The IMP525 is an Electroluminescent (EL) lamp driver designed for systems that must operate down to 1 volt and below. The input supply voltage range is 0.9V to 2.5V. Typical output lamp drive voltage is 112V. All four EL lamp-driving functions are on-chip. These are the switch-mode power supply, its high-frequency oscillator, the high-voltage H-bridge lamp driver and its low-frequency oscillator. EL lamps of up to 6nF capacitance can be driven to high brightness.

The circuit requires few external components; one inductor, one diode, one capacitor and two resistors. The resistors set the frequency for the two oscillators.

A disable mode puts the chip into a low current-drain state. When disabled, quiescent current drops to 1 μ A typical with a V_{DD} of 1.5V. The chip can be disabled by connecting R_{SW} , the oscillator frequency setting resistor, to ground. A disable pad (active low), accessible only on the die, can also be used to disable the driver.

An internal circuit shuts down the switching regulator when the lamp drive voltage exceeds 112V peak-to-peak. This conserves power and extends battery life.

The IMP525 is available in MicroSO and SO-8 packages and in die form.

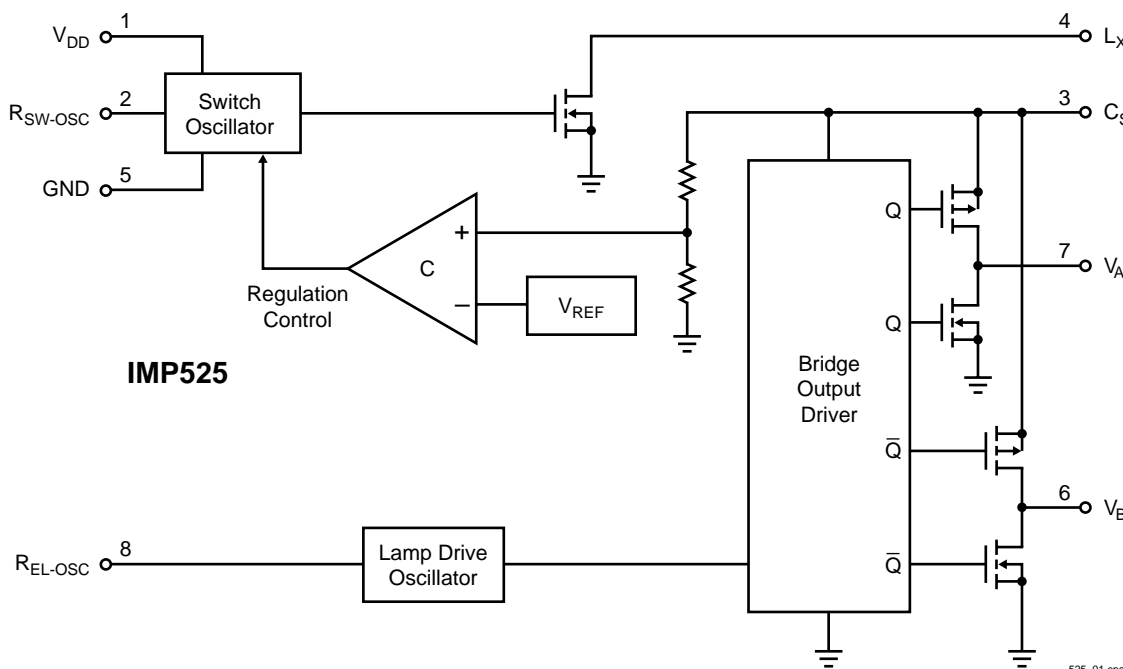
Key Features

- ◆ Wide operating voltage range - from 0.9V to 2.5V
- ◆ Simple design requires few passive components
- ◆ 112V peak-to-peak typical AC output voltage
- ◆ Adjustable output frequency controls lamp color and power consumption
- ◆ Adjustable converter frequency minimizes circuit power consumption
- ◆ Disable mode extends battery life
- ◆ Disable current 1 μ A typical
- ◆ Compact MicroSO package option

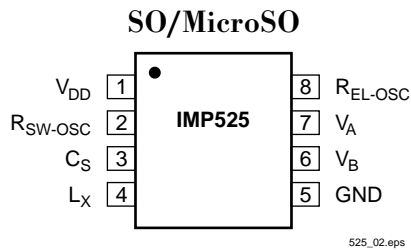
Applications

- ◆ Audio/TV remote control units
- ◆ Pagers/Cellular phones
- ◆ PDAs
- ◆ Clocks and radios
- ◆ Portable GPS receivers
- ◆ LCD modules
- ◆ Toys

Block Diagram



Pin Configuration



Ordering Information

Part Number	Input Voltage	Regulated Output Voltage	Temperature Range	Pins-Package
IMP525EMA	0.9V to 2.5V	YES	-40°C to +85°C	8-MicroSO
IMP525ESA	0.9V to 2.5V	YES	-40°C to +85°C	8-SO
IMP525/D	0.9V to 2.5V	YES	25°C	Dice

Add /T to ordering part number for Tape and Reel.

Absolute Maximum Ratings

Supply Voltage, V_{DD} , $V_{RSW-OSC}$ and $V_{REL-OSC}$. . . -0.5V to +3.5V
 Storage Temperature Range -65°C to +150°C
 Power Dissipation (SO package) 400mW
 Power Dissipation (MicroSO package) 300mW

Note: All voltages are referenced to GND.

These are stress ratings only and functional operation is not implied. Exposure to absolute maximum ratings for prolonged time periods may affect device reliability.

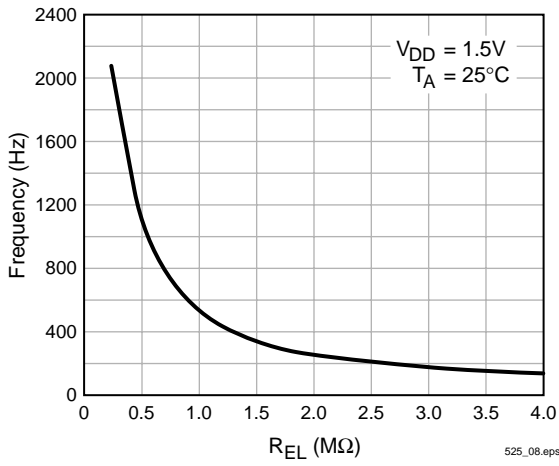
Electrical Characteristics

Unless otherwise noted, $V_{DD} = 1.5V$, $R_{SW} = 1M\Omega$, $R_{EL} = 1.0M\Omega$, and $T_A = 25^\circ C$.

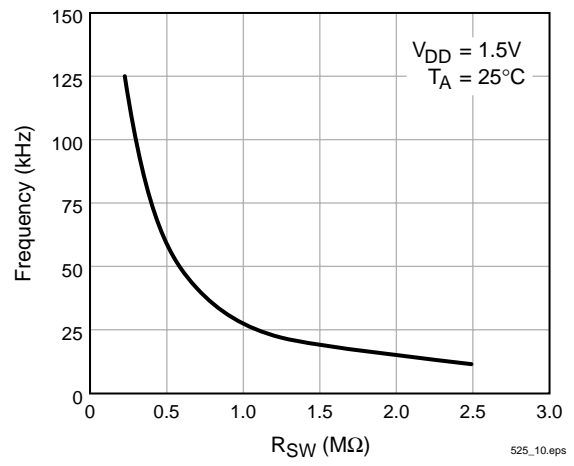
Parameter	Symbol	Conditions	Min	Typ	Max	Units
ON-resistance of MOS Switch	$R_{DS(ON)}$	$I = 50mA$			15	Ω
Operating Voltage			0.9		2.5	V
Output Voltage at C_S	V_{CS}	$V_{DD} = 1.5V$, See Figure 1, Table 1	52	58	65	V
Output Voltage at C_S	V_{CS}	$V_{DD} = 0.9V$, See Figure 1, Table 2		50		V
Output Voltage Peak-to-Peak	V_A-V_B	$V_{DD} = 1.5V$, See Figure 1	104	112	124	V_{P-P}
Quiescent V_{DD} Supply Current, Disabled (Disable pin available on die only)	I_{QDIS}	Disable = HIGH		70		nA
Quiescent V_{DD} Supply Current, Disabled	I_{QDIS}	$R_{SW-OSC} = GND$ $V_{DD} = 1.5V$		1.0	2.0	μA
Input Current at V_{DD} Pin	I_{DD}	$V_{DD} = 0.9V$ to $1.5V$			1.5	mA
Input Current: I_{DD} Plus Inductor Current	I_{IN}	$V_{DD} = 1.5V$		23	32	mA
V_{A-B} Output Drive Frequency	f_{EL}	$V_{DD} = 1.5V$, See Figure 1, Table 1		500		Hz
Boost Converter Switching Frequency	f_{SW}	$V_{DD} = 1.5V$, See Figure 1, Table 1		26		kHz
Switching Duty Cycle	D_{SW}	$V_{DD} = 1.5V$, See Figure 1		87.5		%
Disable Input LOW Voltage (Disable pin available on die only)	V_{DISL}		GND		0.2	V
Disable Input HIGH Voltage (Disable pin available on die only)	V_{DISH}		$V_{DD}-0.5V$		V_{DD}	V

Typical Characteristics

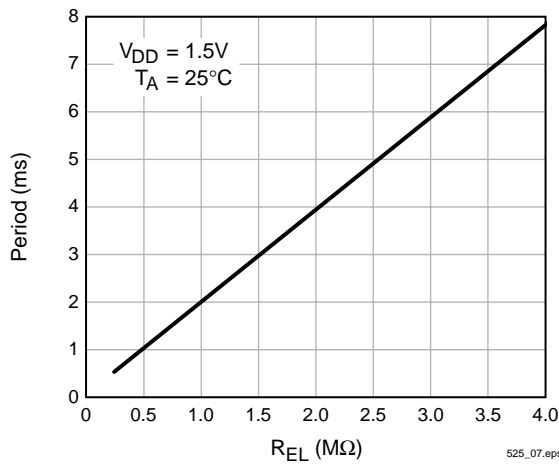
EL Lamp Drive Frequency



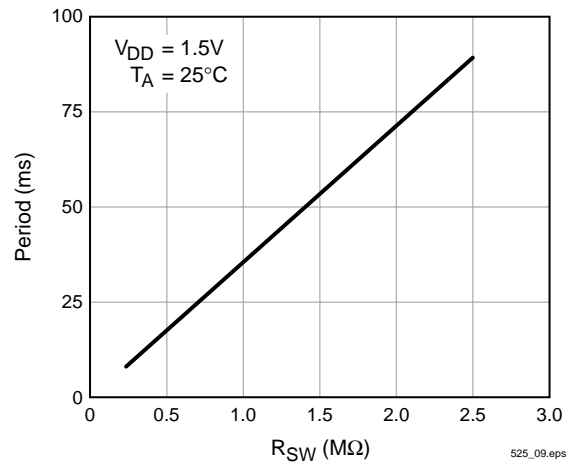
Boost Converter Switching Frequency



EL Lamp Drive Period



Boost Converter Switching Period



Pin Descriptions

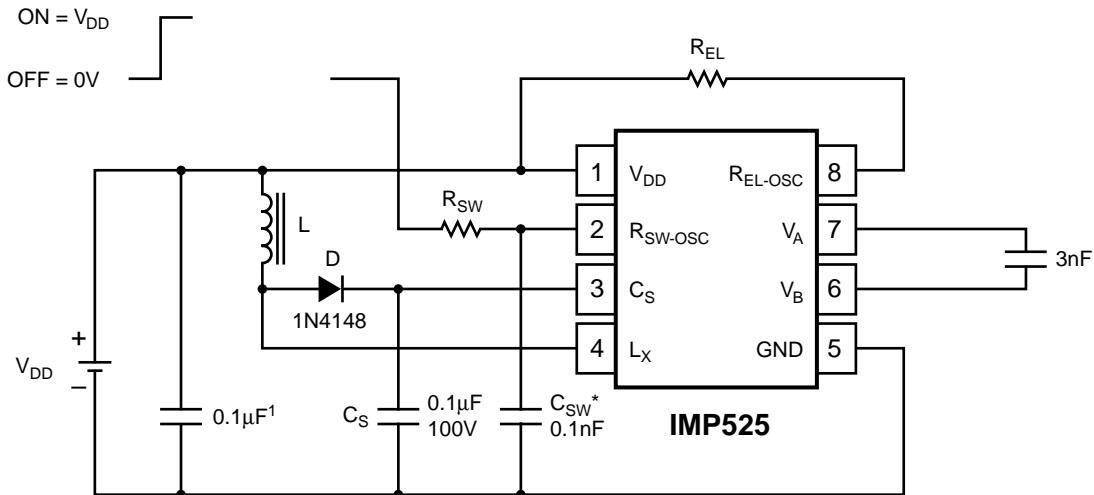
Pin Number	Name	Function
1	V_{DD}	Positive voltage supply for the IMP525. Inductor L may be connected here or to a separate supply.
2	R_{SW-OSC}	Switch-mode resistor pin. Switching frequency is determined by external resistor R_{SW} , connected between pin 2 and V_{DD} .
3	C_S	Boost converter storage capacitor. The voltage across the EL lamp is equal to twice the voltage at C_S .
4	L_X	Connection to flyback inductance, L.
5	GND	Ground pin.
6	V_B	EL lamp drive. The lamp is connected to a high-voltage bridge circuit with V_B providing the complementary connection to V_A .
7	V_A	EL lamp drive. (See above)
8	R_{EL-OSC}	The EL lamp oscillator frequency-setting pin. The frequency is controlled by resistor R_{EL} , connected from pin 8 to V_{DD} .
Disable Pad	DIS	Available only in die form. Setting DIS HIGH disables the chip.

External Components

External Component	Description and Selection Guide
Diode	A fast reverse recovery diode, with $BV > 100$, such as a 1N4148.
Capacitor C_S	The high voltage capacitor that stores the inductive energy transferred through the catch diode. A 100 volt capacitor between 10nF and 100nF is recommended.
Resistor R_{EL}	The EL lamp oscillator frequency-setting resistor. R_{EL} is connected between pin 8 and V_{DD} , providing a frequency inversely proportional to R_{EL} ; as R_{EL} increases, the EL lamp frequency decreases along with the current drawn by the lamp. Lamp color is also determined by this frequency. A 1M Ω resistor between the R_{EL-OSC} pin and the V_{DD} supply results in a lamp frequency around 500Hz.
Resistor R_{SW}	Switching Oscillator frequency-setting resistor. R_{SW} is connected between the R_{SW-OSC} pin and the V_{DD} supply. The switching frequency is inversely proportional to the resistor value, dropping as the resistance increases.
Capacitor C_{SW}	This is an optional noise-suppression capacitor connected from ground to the R_{SW-OSC} pin. A 100pF capacitor is recommended.
Inductor L	<p>The inductor provides the voltage boost needed by means of inductive “flyback”. The internal MOSFET switch alternately opens and closes the ground connection for the inductor at the L_X pin. When the switch opens, the inductor potential will forward-bias the diode and the current will pass through to the storage capacitor C_S, charging it to a high voltage.</p> <p>As the value of the inductor is increased, the switching frequency set by R_{SW} should also be increased to prevent saturation. In general, smaller value inductors that can handle more current are more desirable when larger-area EL lamps must be driven.</p> <p>A small electrolytic capacitor (10μF, 16V), normally present across the inductor supply V_{IN}, will likely eliminate the need for C_{SW}.</p>

Test Circuit

Figure 1 shows the IMP525 configured to drive an EL lamp, represented as a 3nF capacitor.



Note:
1. Larger values may be required depending upon supply impedance.

* Optional

525_03.eps

Figure 1. Test Circuit

Table 1. $V_{IN} = 1.5V$

Component	Connections	Value	Description
R_{SW}	V_{DD}, R_{SW-OSC}	1MΩ	Boost converter oscillator bias resistor
R_{EL}	V_{DD}, R_{EL-OSC}	1MΩ	EL lamp driver oscillator bias resistor
L	V_{DD}, L_X^2	330μH ²	Boost converter inductor
C_S	C_S, GND	0.1μF/100V	Boost converter storage capacitor
D	L_X, C_S	1N4148	Switching diode
C_{SW}	R_{SW-OSC}, GND	0.1nF	Noise-suppression capacitor

Notes. 2. Murata LQH4N331K04 (8.2Ω max. DCR)

Table 2. $V_{IN} = 0.9V$

Component	Connections	Value	Description
R_{SW}	V_{DD}, R_{SW-OSC}	1.0MΩ	Boost converter oscillator bias resistor
R_{EL}	V_{DD}, R_{EL-OSC}	2.62MΩ	EL lamp driver oscillator bias resistor
L	V_{DD}, L_X^3	680μH ³	Boost converter inductor
C_S	C_S, GND	0.1μF/100V	Boost converter storage capacitor
D	L_X, C_S	1N4148	Switching diode
C_{SW}	R_{SW-OSC}, GND	0.1nF	Noise-suppression capacitor

Notes. 3. Coilcraft DS1608C-684 (2.2Ω max. DCR)

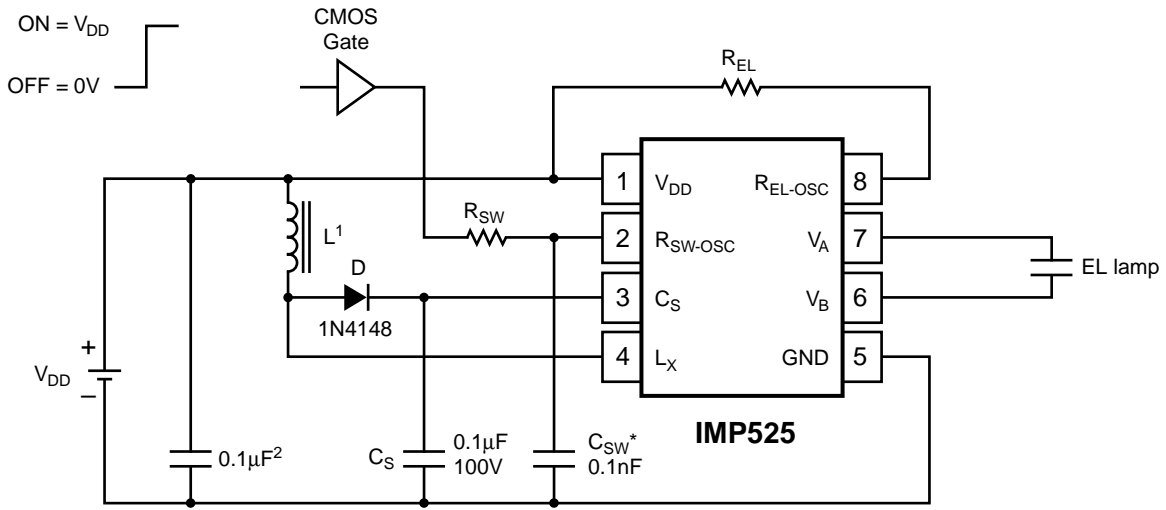
Enable/Disable Operation

Figure 2 shows how the IMP525 can be enabled via a logic gate that connects R_{SW} to V_{DD} , and disabled by connecting it to ground.

The IMP525 can also be disabled using a pad on the die. The Disable function pin is not available in packaged parts.

Enable/Disable Table	
R_{SW} Connection	IMP525 State
V_{DD}	Enabled
Ground	Disabled

Disable PAD Connection (Available only with dice)	IMP525 State
HIGH (V_{DD})	Disabled
LOW (Ground)	Enabled



Note:
 1. Murata part # LQH4N331K04 (DC resistance < 8.2 Ω)
 2. Larger values may be required depending upon supply impedance.
 * Optional

525_04.eps

Figure 2. Enable/Disable Operation

High Voltages Present

The IMP525 generates high voltages and caution should be exercised.

Inductor Manufacturers

Manufacturer	Series	USA Phone Number
Toko	D52FU	(847) 297-0070
Coilcraft	DS1608, DO1608, DT1608	(847) 639-6400
River Electronics	FLC32	(310) 320-7488
Murata	LQH4N	(800) 831-9172

POWER MANAGEMENT

Single Cell Battery Powered Electroluminescent Lamp Driver/Inverter

The IMP527 is an Electroluminescent (EL) lamp driver designed for systems that must operate down to 1 volt and below. The input supply voltage range is 0.9V to 2.5V. Typical output lamp drive voltage is 180V. All four EL lamp-driving functions are on-chip. These are the switch-mode power supply, its high-frequency oscillator, the high-voltage H-bridge lamp driver and its low-frequency oscillator. EL lamps of up to 6nF capacitance can be driven to high brightness.

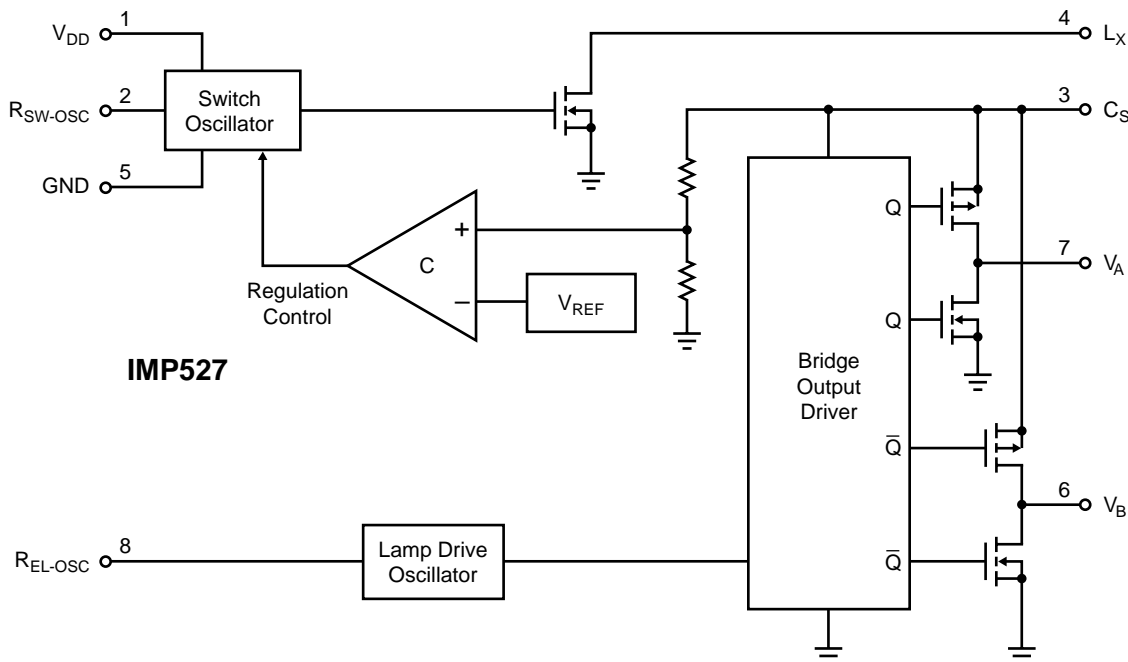
The circuit requires few external components; one inductor, one diode, one capacitor and two resistors. The resistors set the frequency for the two oscillators.

A disable mode puts the chip into a low current-drain state. When disabled, quiescent current drops to 1 μ A typical with a V_{DD} of 1.5V. The chip can be disabled by connecting R_{SW} , the oscillator frequency setting resistor, to ground. A disable pad (active low), accessible only on the die, can also be used to disable the driver.

An internal circuit shuts down the switching regulator when the lamp drive voltage exceeds 180V peak-to-peak. This conserves power and extends battery life.

The IMP527 is available in MicroSO and SO-8 packages and in die form.

Block Diagram



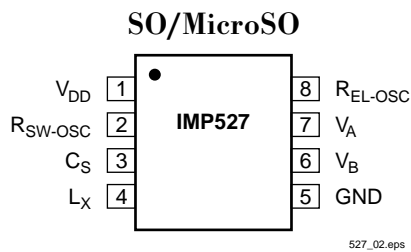
Key Features

- ◆ Wide operating voltage range - from 0.9V to 2.5V
- ◆ Simple design requires few passive components
- ◆ 180V peak-to-peak typical AC output voltage
- ◆ Adjustable output frequency controls lamp color and power consumption
- ◆ Adjustable converter frequency minimizes circuit power consumption
- ◆ Disable mode extends battery life
- ◆ Disable current 1 μ A typical
- ◆ Compact MicroSO package option

Applications

- ◆ Audio/TV remote control units
- ◆ Pagers/Cellular phones
- ◆ PDAs
- ◆ Clocks and radios
- ◆ Portable GPS receivers
- ◆ LCD modules
- ◆ Toys

Pin Configuration



Ordering Information

Part Number	Input Voltage	Regulated Output Voltage	Temperature Range	Pins-Package
IMP527EMA	0.9V to 2.5V	YES	-40°C to +85°C	8-MicroSO
IMP527ESA	0.9V to 2.5V	YES	-40°C to +85°C	8-SO
IMP527/D	0.9V to 2.5V	YES	25°C	Dice

Absolute Maximum Ratings

Supply Voltage, V_{DD} , $V_{RSW-OSC}$ and $V_{REL-OSC}$. . -0.5V to +3.5V
 Storage Temperature Range -65°C to +150°C
 Power Dissipation (SO package) 400mW
 Power Dissipation (MicroSO package) 300mW

Note: All voltages are referenced to GND.

These are stress ratings only and functional operation is not implied. Exposure to absolute maximum ratings for prolonged time periods may affect device reliability.

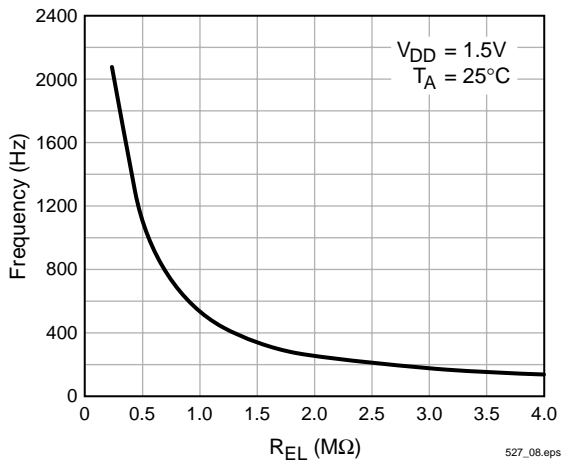
Electrical Characteristics

Unless otherwise noted, $V_{DD} = 1.5V$, $R_{SW} = 1M\Omega$, $R_{EL} = 1M\Omega$, and $T_A = 25^\circ C$.

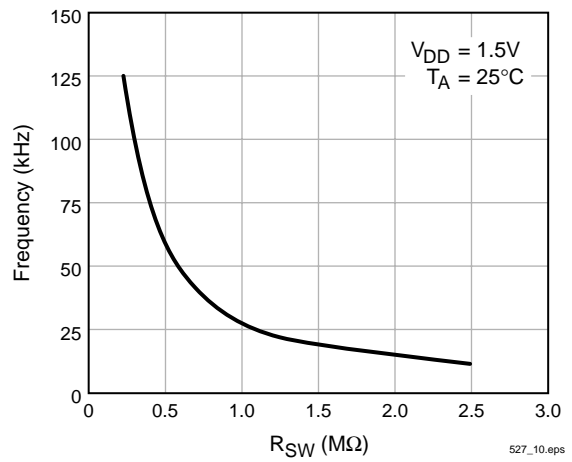
Parameter	Symbol	Conditions	Min	Typ	Max	Units
ON-resistance of MOS Switch	$R_{DS(ON)}$	$I = 50mA$			15	Ω
Operating Voltage			0.9		2.5	V
Output Voltage at C_S	V_{CS}	$V_{DD} = 1.5V$, See Figure 1, Table 1	80	90		V
Output Voltage at C_S	V_{CS}	$V_{DD} = 0.9V$, See Figure 1, Table 2		50		V
Output Voltage Peak-to-Peak	V_A-V_B	$V_{DD} = 1.5V$, See Figure 1		180		V_{P-P}
Quiescent V_{DD} Supply Current, Disabled (Disable pin available on die only)	I_{QDIS}	Disable = HIGH		70		nA
Quiescent V_{DD} Supply Current, Disabled	I_{QDIS}	$R_{SW-OSC} = GND$ $V_{DD} = 1.5V$		1.0	2.0	μA
Input Current at V_{DD} Pin	I_{DD}	$V_{DD} = 0.9V$ to $1.5V$			1.5	mA
Input Current: I_{DD} Plus Inductor Current	I_{IN}	$V_{DD} = 1.5V$, See Figure 1, Table 1		26	32	mA
V_{A-B} Output Drive Frequency	f_{EL}	$V_{DD} = 1.5V$, See Figure 1, Table 1		500		Hz
Boost Converter Switching Frequency	f_{SW}	$V_{DD} = 1.5V$, See Figure 1, Table 1		26		kHz
Switching Duty Cycle	D_{SW}	$V_{DD} = 1.5V$, See Figure 1		87.5		%
Disable Input LOW Voltage (Disable pin available on die only)	V_{DISL}		GND		0.2	V
Disable Input HIGH Voltage (Disable pin available on die only)	V_{DISH}		$V_{DD}-0.5V$		V_{DD}	V

Typical Characteristics

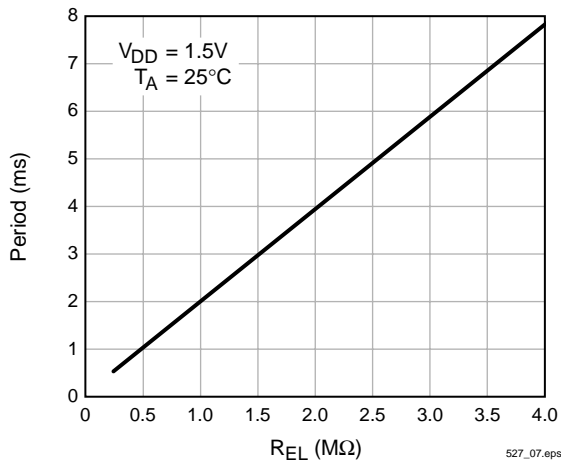
EL Lamp Drive Frequency



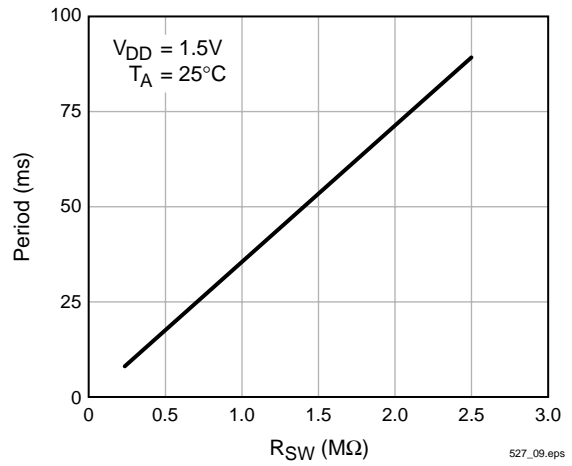
Boost Converter Switching Frequency



EL Lamp Drive Period



Boost Converter Switching Period



Pin Descriptions

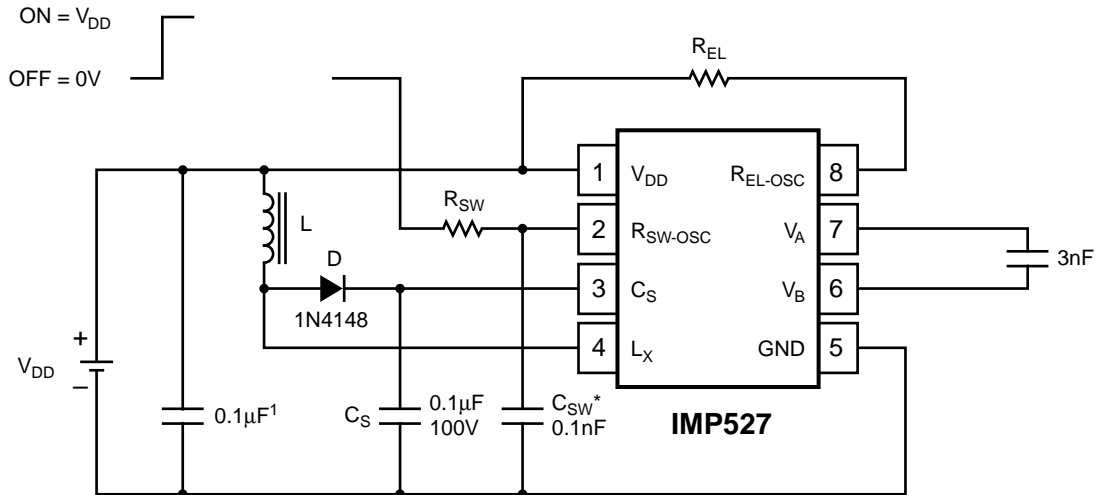
Pin Number	Name	Function
1	V_{DD}	Positive voltage supply for the IMP527. Inductor L may be connected here or to a separate supply.
2	R_{SW-OSC}	Switch-mode resistor pin. Switching frequency is determined by external resistor R_{SW} , connected between pin 2 and V_{DD} .
3	C_S	Boost converter storage capacitor. The voltage across the EL lamp is equal to twice the voltage at C_S .
4	L_X	Connection to flyback inductance, L.
5	GND	Ground pin.
6	V_B	EL lamp drive. The lamp is connected to a high-voltage bridge circuit with V_B providing the complementary connection to V_A .
7	V_A	EL lamp drive. (See above)
8	R_{EL-OSC}	The EL lamp oscillator frequency-setting pin. The frequency is controlled by resistor R_{EL} , connected from pin 8 to V_{DD} .
Disable Pad	DIS	Available only in die form. Setting DIS HIGH disables the chip.

External Components

External Component	Description and Selection Guide
Diode	A fast reverse recovery diode, with $BV > 100$, such as a 1N4148.
Capacitor C_S	The high voltage capacitor that stores the inductive energy transferred through the catch diode. A 100 volt capacitor between 10nF and 100nF is recommended.
Resistor R_{EL}	The EL lamp oscillator frequency-setting resistor. R_{EL} is connected between pin 8 and V_{DD} , providing a frequency inversely proportional to R_{EL} ; as R_{EL} increases, the EL lamp frequency decreases along with the current drawn by the lamp. Lamp color is also determined by this frequency. A 1M Ω resistor between the R_{EL-OSC} pin and the V_{DD} supply results in a lamp frequency around 500Hz.
Resistor R_{SW}	Switching Oscillator frequency-setting resistor. R_{SW} is connected between the R_{SW-OSC} pin and the V_{DD} supply. The switching frequency is inversely proportional to the resistor value, dropping as the resistance increases.
Capacitor C_{SW}	This is an optional noise-suppression capacitor connected from ground to the R_{SW-OSC} pin. A 100pF capacitor is recommended.
Inductor L	<p>The inductor provides the voltage boost needed by means of inductive "flyback". The internal MOSFET switch alternately opens and closes the ground connection for the inductor at the L_X pin. When the switch opens, the inductor potential will forward-bias the diode and the current will pass through to the storage capacitor C_S, charging it to a high voltage.</p> <p>As the value of the inductor is increased, the switching frequency set by R_{SW} should also be increased to prevent saturation. In general, smaller value inductors that can handle more current are more desirable when larger-area EL lamps must be driven.</p> <p>A small electrolytic capacitor (10μF, 16V), normally present across the inductor supply V_{IN}, will likely eliminate the need for C_{SW}.</p>

Application Information
Test Circuit

Figure 1 shows the IMP527 configured to drive an EL lamp, represented as a 3nF capacitor.



Note:
1. Larger values may be required depending upon supply impedance.

* Optional

527_03.eps

Figure 1. Test Circuit

Table 1. $V_{IN} = 1.5V$

Component	Connections	Value	Description
R_{SW}	V_{DD} , R_{SW-OSC}	1M Ω	Boost converter oscillator bias resistor
R_{EL}	V_{DD} , R_{EL-OSC}	1M Ω	EL lamp driver oscillator bias resistor
L	V_{DD} , L_X^2	330 μH^2	Boost converter inductor
C_S	C_S , GND	0.1 μF /100V	Boost converter storage capacitor
D	L_X , C_S	1N4148	Switching diode
C_{SW}	R_{SW-OSC} , GND	0.1nF	Noise-suppression capacitor (optional)

Notes. 2. Murata LQH4N331K04 (8.2 Ω max. DCR)

Table 2. $V_{IN} = 0.9V$

Component	Connections	Value	Description
R_{SW}	V_{DD} , R_{SW-OSC}	1M Ω	Boost converter oscillator bias resistor
R_{EL}	V_{DD} , R_{EL-OSC}	2.62M Ω	EL lamp driver oscillator bias resistor
L	V_{DD} , L_X^3	680 μH^3	Boost converter inductor
C_S	C_S , GND	0.1 μF /100V	Boost converter storage capacitor
D	L_X , C_S	1N4148	Switching diode
C_{SW}	R_{SW-OSC} , GND	0.1nF	Noise-suppression capacitor (optional)

Notes. 3. Coilcraft DS1608C-684 (2.2 Ω max. DCR)

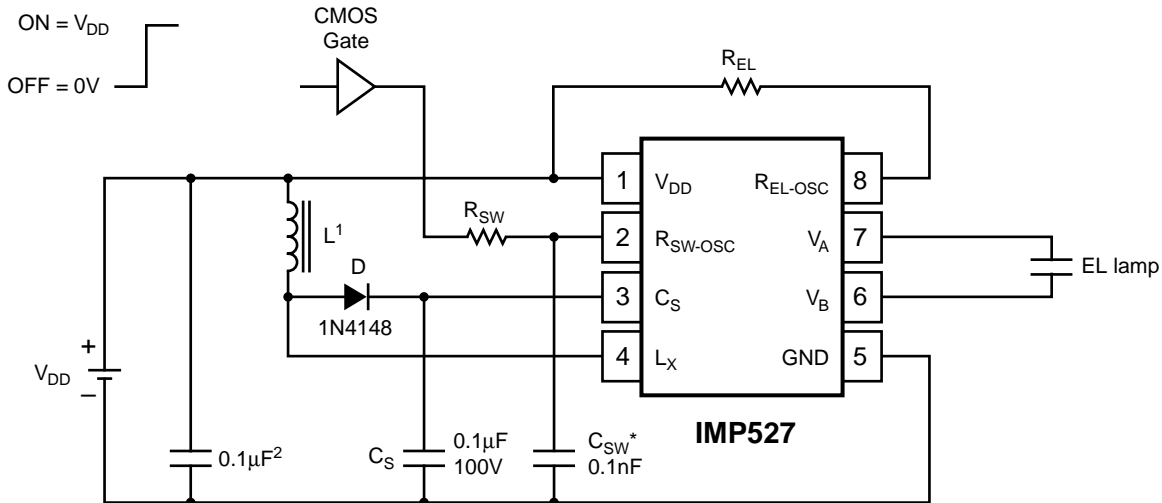
Enable/Disable Operation

Figure 2 shows how the IMP527 can be enabled via a logic gate that connects R_{SW} to V_{DD} , and disabled by connecting it to ground.

The IMP527 can also be disabled using a pad on the die. The Disable function pin is not available in packaged parts.

Enable/Disable Table	
R_{SW} Connection	IMP527 State
V_{DD}	Enabled
Ground	Disabled

Disable PAD Connection (Available only with dice)	IMP527 State
HIGH (V_{DD})	Disabled
LOW (Ground)	Enabled



Note:
 1. Murata part # LQH4N331K04 (DC resistance < 8.2 Ω)
 2. Larger values may be required depending upon supply impedance.

* Optional

527_04.eps

Figure 2. Enable/Disable Operation

High Voltages Present

The IMP527 generates high voltages and caution should be exercised.

Inductor Manufacturers

Manufacturer	Series	USA Phone Number
Toko	D52FU	(847) 297-0070
Coilcraft	DS1608, DO1608, DT1608	(847) 639-6400
River Electronics	FLC32	(310) 320-7488
Murata	LQH4N	(800) 831-9172

POWER MANAGEMENT

High-Voltage EL Lamp Driver

- 220 V_{PP} Drive

The IMP528 is an Electroluminescent (EL) lamp driver with the four EL lamp driving functions on-chip. These are the switch-mode power supply, its high-frequency oscillator, the high-voltage H-bridge lamp driver and its low-frequency oscillator. The IMP528 drives EL lamps of up to 50nF capacitance to high brightness; EL lamps with capacitances greater than 50nF can be driven, but will be lower in light output. The typical regulated output voltage that is applied to the EL lamp is 220V peak-to-peak. The circuit requires few external components; a single inductor, single diode, two capacitors and three resistors. Two of these resistors set the frequency for two internal oscillators.

Unlike other EL lamp drivers, the IMP528 does not require an external protection resistor in series with the EL lamp.

The IMP528 operates over a 2.0V to 6.5V supply voltage range. A regulated, low-power source can supply the low quiescent current of the IMP528. The inductor may be driven from an independent, unregulated supply voltage in dual supply applications.

An internal circuit shuts down the switching regulator when the lamp drive voltage reaches 220V peak-to-peak. This conserves power and extends battery life.

The IMP528 is available in MicroSO and SO-8 packages and in die or wafer form.

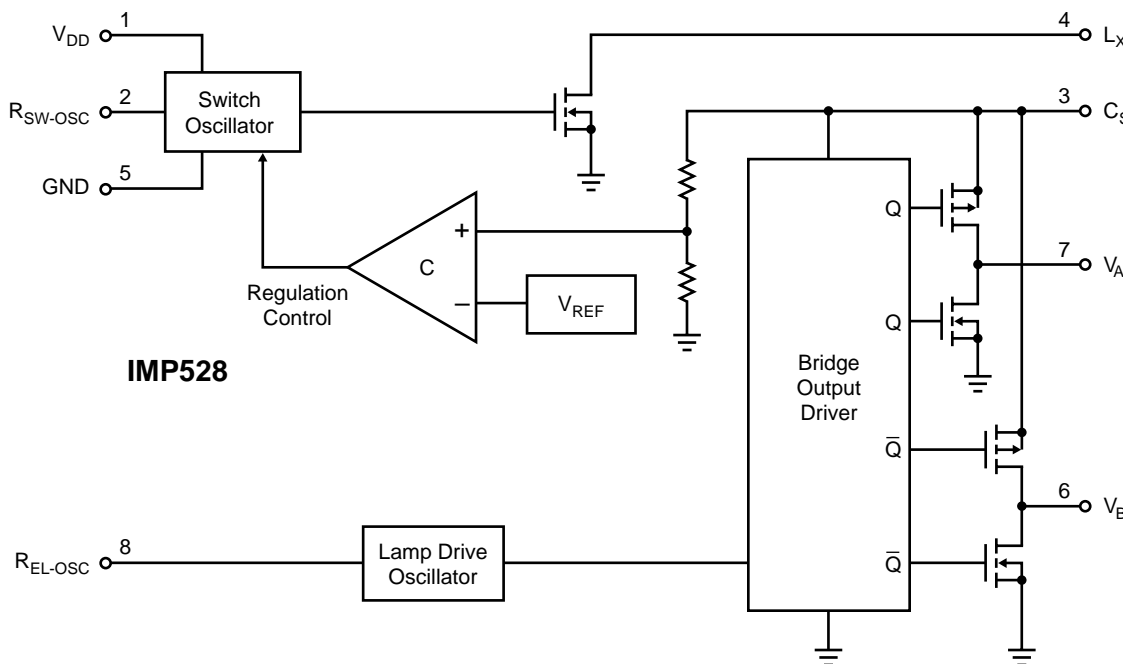
Key Features

- ◆ 220V peak-to-peak typical AC output voltage
- ◆ Low Power: 420µA typical V_{DD} current
- ◆ Wide operating voltage range - from 2.0V to 6.5V
- ◆ Large output load capability - drives lamps with more than 50nF capacitance
- ◆ Eliminates external protection resistor in series with EL lamp
- ◆ Adjustable output lamp frequency for control of lamp color, lamp life, and power consumption
- ◆ Adjustable converter frequency to minimize power consumption
- ◆ High-Voltage CMOS Process
- ◆ MicroSO package option

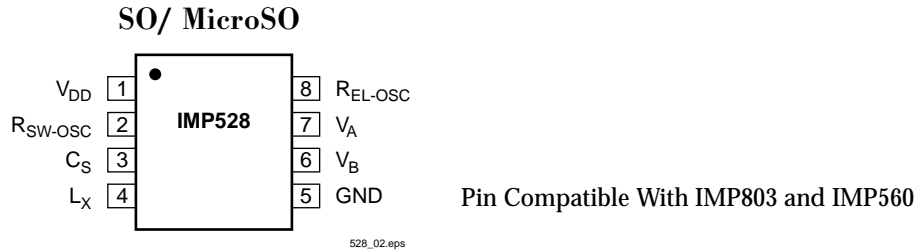
Applications

- ◆ GPS units/Pagers/Cellular phones
- ◆ PDAs/Handheld computers
- ◆ Safety illumination
- ◆ Portable instrumentation
- ◆ Battery-operated displays
- ◆ LCD modules
- ◆ Toys

Block Diagram



Pin Configuration



Ordering Information

Part Number	Input Voltage	Regulated Output Voltage	Temperature Range	Pins-Package
IMP528ESA	2.0V to 6.5V	Yes	-40°C to +85°C	8-SO
IMP528EMA	2.0V to 6.5V	Yes	-40°C to +85°C	8-MicroSO
IMP528/D	2.0V to 6.5V	Yes	25°C	Dice
IMP528/D1	2.0V to 6.5V	Yes	25°C	Dice

Add /T to ordering part number for Tape and Reel.

Absolute Maximum Ratings

V_{DD}	-0.5V to +7.0V
$V_{RSW-OSC}$ and $V_{REL-OSC}$	-0.5V to $V_{DD} + 0.3V$
V_{CS} , L_X	-0.5V to +120V
Operating Temperature Range	-40°C to +85°C
Storage Temperature Range	-65°C to +150°C
Power Dissipation (SO)	400mW
Power Dissipation (MicroSO)	300mW
V_A , V_B	-0.5V to V_{CS} (pin 3)

Note: All voltages are referenced to GND.

These are stress ratings only and functional operation is not implied. Exposure to absolute maximum ratings for prolonged time periods may affect device reliability.

Electrical Characteristics

Unless otherwise noted, $V_{DD} = 3.0V$, $R_{SW} = 910k\Omega$, $R_{EL} = 2.7M\Omega$, and $T_A = 25^\circ C$.

Parameter	Symbol	Conditions	Min	Typ	Max	Units
ON-resistance of MOS Switch	$R_{DS(ON)}$	$I = 100mA$		3.0	8	Ω
Output Voltage Regulation	V_{CS}	$V_{DD} = 2.0$ to $6.5V$		110		V
Output Voltage Peak-to-peak (in regulation)	$V_A - V_B$	$V_{DD} = 2.0$ to $6.5V$		220		V
Input Current at V_{DD} Pin	I_{DD}	$V_{DD} = 3.0V$, See Figure 1		420	700	μA
Input Current at V_{DD} Pin	I_{DD}	$V_{DD} = 5.0V$		500	750	μA
Quiescent V_{DD} Supply Current, Disabled	I_{DDQ}	$V_{RSW-OSC} < 100mV$		20	200	nA
Input Current: I_{DD} Plus Inductor Current	I_{IN}	$V_{DD} = 3.0V$, See Figure 1		21	31	mA
Output Voltage at V_{CS}	V_{CS}	$V_{DD} = 3.0V$, See Figure 1		110		V
V_{A-B} Output Drive Frequency	f_{EL}	$V_{DD} = 3.0V$, See Figure 1		250		Hz
Switching Frequency	f_{SW}	$V_{DD} = 3.0V$, See Figure 1		61		kHz
Switching Duty Cycle	D_{SW}	$V_{DD} = 3.0V$, See Figure 1		88		%

Pin Descriptions

Pin Number	Name	Function
1	V_{DD}	Positive voltage supply for the IMP528. Inductor L may be connected here or to a separate unregulated supply.
2	R_{SW-OSC}	Switch-mode resistor pin. Switching frequency is determined by an external resistor, R_{SW} .
3	C_S	Boost converter storage capacitor. The voltage across the EL lamp is equal to twice the voltage at C_S .
4	L_X	Connection to flyback inductance, L.
5	GND	Ground pin.
6	V_B	EL lamp drive. The lamp is connected in a high-voltage bridge circuit with V_B providing the complementary connection to V_A . The peak-to-peak AC voltage across the EL lamp is thus two times V_{CS} .
7	V_A	EL lamp drive. (See above)
8	R_{EL-OSC}	The EL lamp oscillator frequency setting pin. The oscillator frequency is controlled by external resistor R_{EL} .

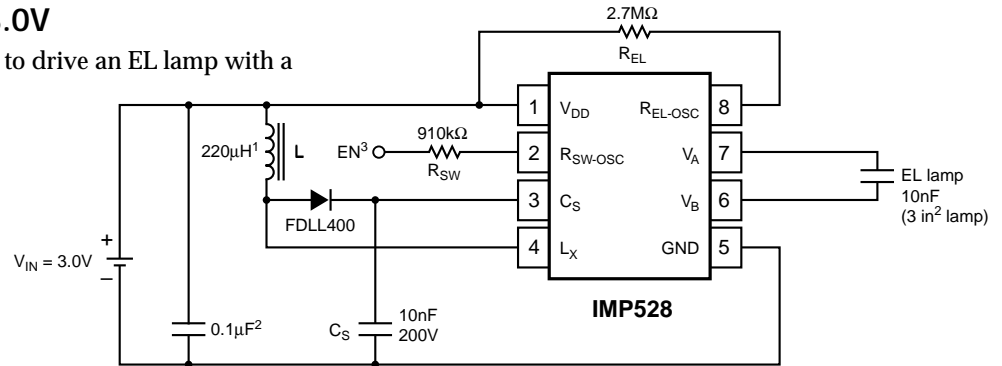
External Components

External Component	Description and Selection Guide
Diode	Catch diode. A fast reverse recovery diode, with $BV > 150V$, such as an FDLL400 (150V).
Capacitor C_S	This is the high voltage capacitor that stores the inductive energy transferred through the catch diode. A capacitor with WV $> 120V$ between 10nF and 100nF is recommended.
Resistor R_{EL}	The EL lamp oscillator frequency setting resistor. This resistor, connected between the R_{EL-OSC} pin and V_{DD} , provides an oscillator frequency inversely proportional to R_{EL} ; as R_{EL} increases, the EL lamp frequency decreases along with the current drawn by the lamp. Lamp color is also determined by this frequency. A 2.7M Ω resistor between the R_{EL-OSC} pin and the V_{DD} supply results in a lamp frequency around 250Hz.
Resistor R_{SW}	Switching Oscillator frequency setting resistor. The switching oscillator resistor is connected between the R_{SW-OSC} pin and the V_{DD} supply. The switching frequency is inversely proportional to the resistor value, dropping as the resistance increases.
Inductor L	<p>The inductor provides the voltage boost needed by means of inductive “flyback”. The internal MOSFET switch alternately opens and closes the ground connection for the inductor at the L_X pin. When this internal switch opens, the inductor potential will forward-bias the catch diode and the current will pass through the storage capacitor C_S, charging it to a high voltage.</p> <p>Smaller inductors are preferred to prevent saturation. As the value of the inductor increases (and the series DC resistance of the inductor decreases), the switching frequency set by R_{SW} should be increased to prevent saturation. In general, smaller value inductors that can handle more current are more desirable when larger area EL lamps must be driven.</p>

Application Information

Test and Application Circuit, 3.0V

Figure 1 shows the IMP528 configured to drive an EL lamp with a 3.0V input.



Note:

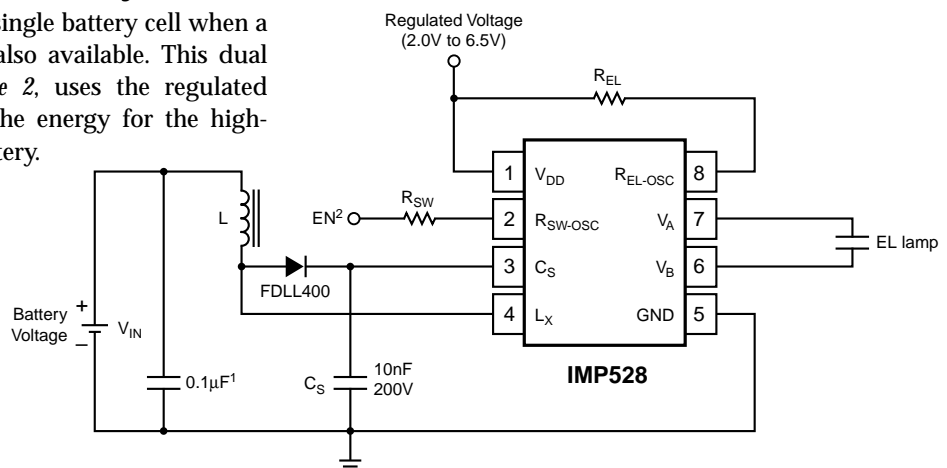
1. Murata part # LQH4N221K04 (DC resistance <math><5\Omega</math>)
2. Larger values may be required depending upon supply impedance.
3. EN is connected to V_{DD} to enable and to GND to disable.

528_03.eps

Figure 1. 3.0V Application

Dual Supply Operation with 1.5V Battery

The IMP528 can also be operate from a single battery cell when a regulated voltage higher than 2.0V is also available. This dual supply configuration, shown in Figure 2, uses the regulated voltage to operate the IMP528 while the energy for the high-voltage boost circuit comes from the battery.



1. Larger values may be required depending upon supply impedance.
2. EN is connected to V_{DD} to enable and to GND to disable.

528_04.eps

Figure 2. Dual Supply Operation

Switch Resistance

The IMP528 inductor switch resistance is typically below 3.5Ω, as shown in Figure 3.

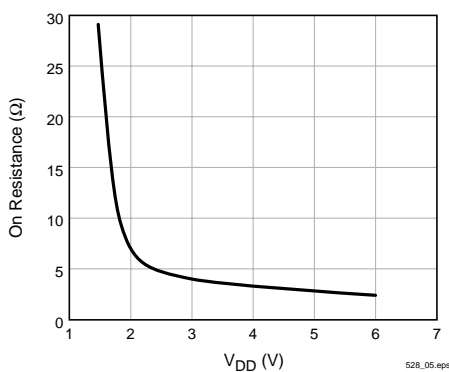


Figure 3. Boost Switch ON-Resistance

High-Voltages Present

The IMP528 generates high voltages and caution should be exercised.

POWER MANAGEMENT

Power Efficient EL Lamp Driver

The IMP560 is an Electroluminescent (EL) lamp driver designed for systems with low EL lamp drive voltage requirements. It is ideal for low ambient light applications or where small lamps are used. With just one-half the inductor current of the IMP803, the IMP560 reduces system power consumption and extends battery life. Input supply voltage range is 2.0V to 6.5V and quiescent current is a low 420 μ A. Typical EL lamp drive voltage is \pm 56V.

All four EL lamp-driving functions are on-chip. These are the switch-mode power supply, its high-frequency oscillator, the high-voltage H-bridge lamp driver and its low-frequency oscillator. EL lamps of up to 6nF capacitance can be driven to high brightness.

The circuit requires few external components; a single inductor, a single diode, two capacitors and three resistors. Two of these resistors set the frequencies for two internal oscillators. An internal circuit shuts down the switching regulator when the lamp drive voltage exceeds 120V peak-to-peak. This conserves power and extends battery life.

A disable mode puts the chip into a low current drain mode. With a 3.0V supply, quiescent current drops to 200nA maximum, 50nA typical. The chip is disabled by connecting the oscillator frequency setting resistor R_{SW} to ground.

The IMP560 is available in MicroSO and SO-8 packages and in die or wafer form.

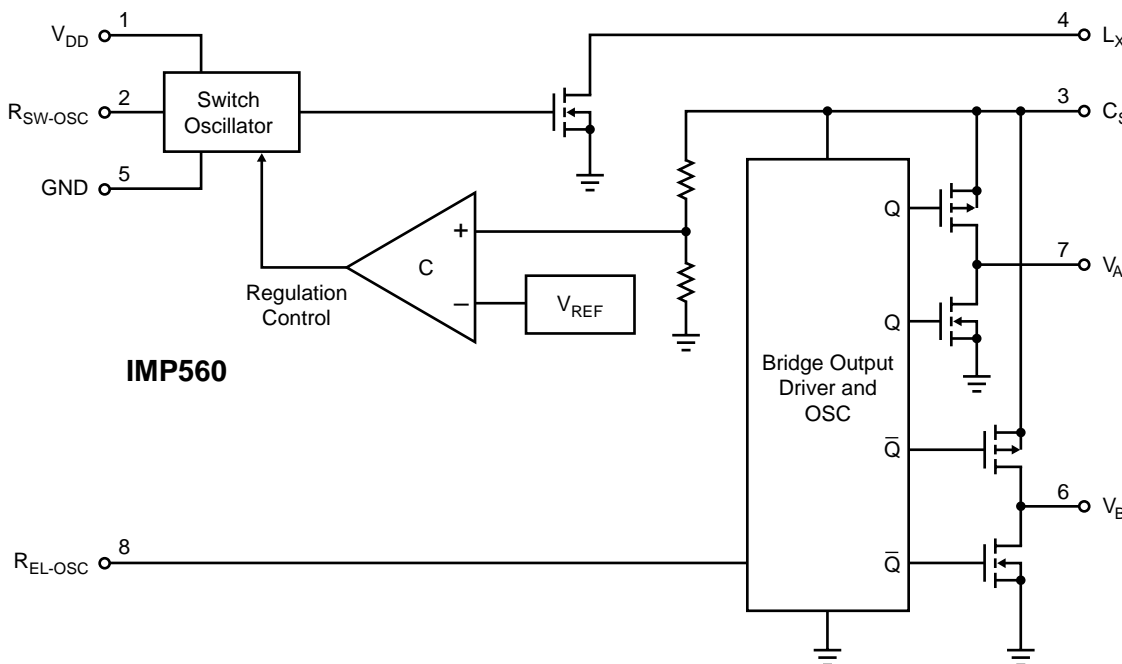
Key Features

- ◆ 112V peak-to-peak typical AC output voltage
- ◆ Low input current (w/inductor current).....12mA
- ◆ Low disabled input current.....50nA
- ◆ Wide operating voltage range - from 2.0V to 6.5V
- ◆ Simple design requires few passive components
- ◆ Adjustable output lamp frequency controls lamp color and power consumption
- ◆ Adjustable converter frequency for minimum power consumption
- ◆ IMP803 pin-compatible
- ◆ MicroSO package option

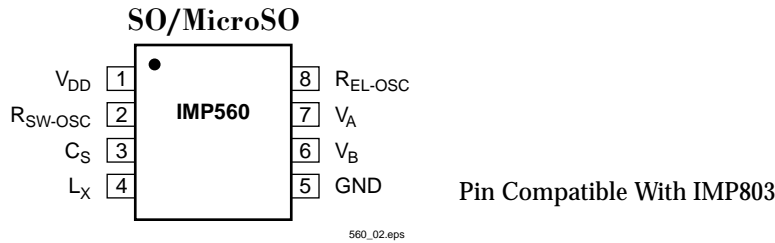
Applications

- ◆ Night lights
- ◆ Automotive displays
- ◆ Cellular phones
- ◆ Pagers
- ◆ Clocks and radios
- ◆ Portable GPS receivers
- ◆ LCD module backlights

Block Diagram



Pin Configuration



Ordering Information

Part Number	Input Voltage	Regulated Output Voltage	Temperature Range	Pins-Package
IMP560EMA	2.0V to 6.5V	YES	-40°C to +85°C	8-MicroSO
IMP560ESA	2.0V to 6.5V	YES	-40°C to +85°C	8-SO
IMP560/D	2.0V to 6.5V	YES	25°C	Dice

Add /T to ordering part number for Tape and Reel.

Absolute Maximum Ratings

Supply Voltage, V_{DD} , $V_{RSW-OSC}$ and $V_{REL-OSC}$. . .	-0.5V to +7.0V
Output Voltage, V_{CS}	-0.5V to +120V
Operating Temperature Range	-40°C to +85°C
Storage Temperature Range	-65°C to +150°C
Power Dissipation (SO)	400mW
Power Dissipation (MicroSO)	300mW

Note: All voltages are referenced to GND.

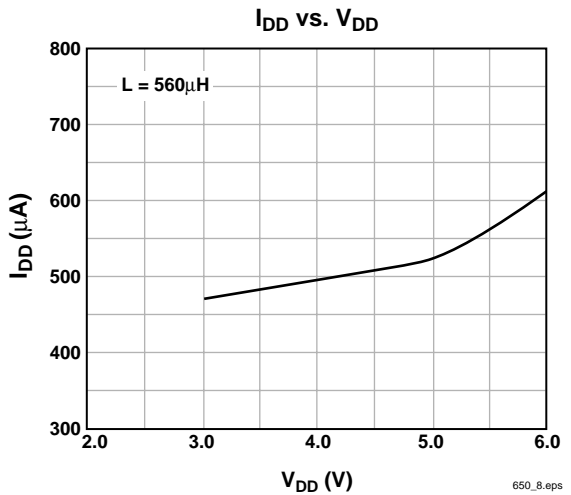
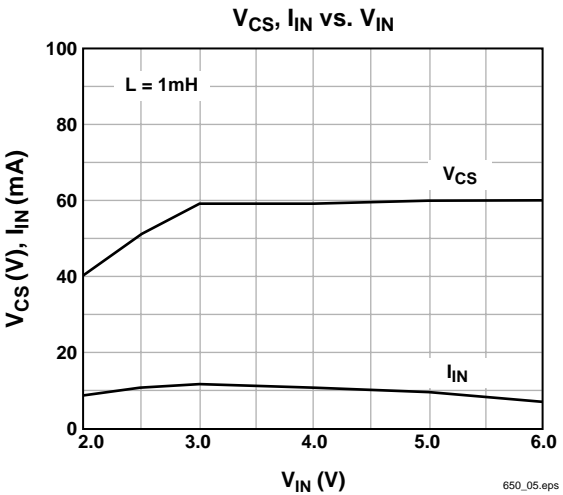
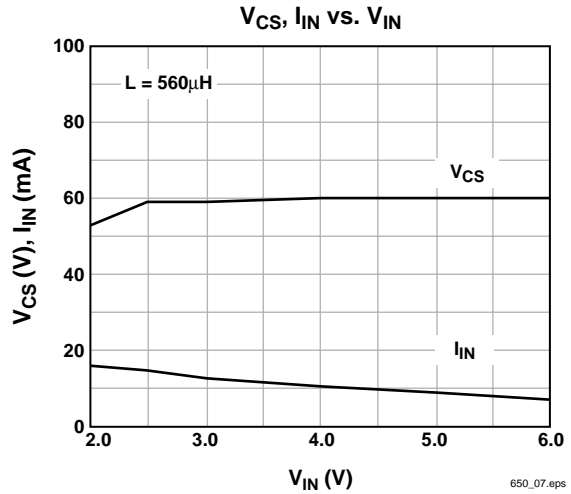
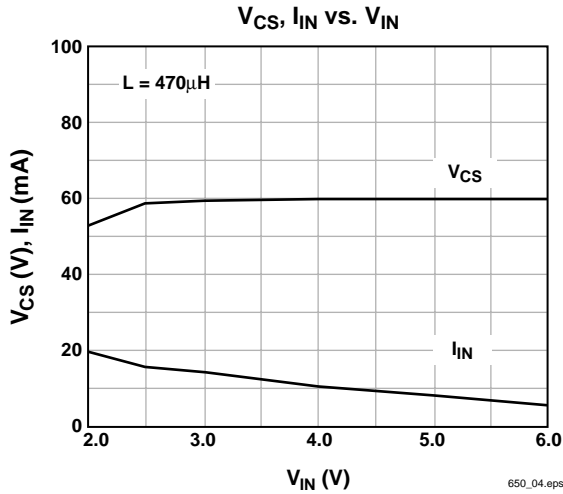
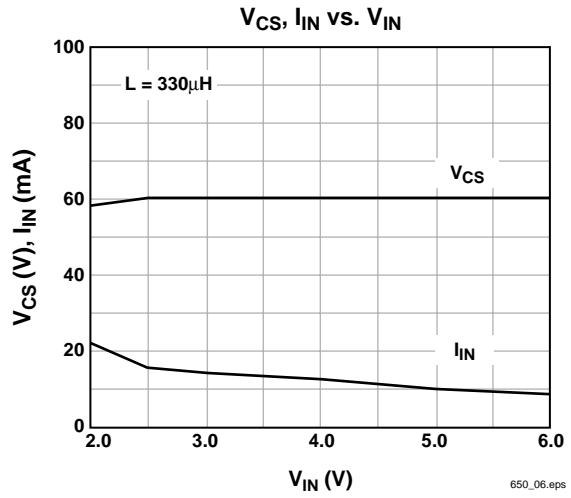
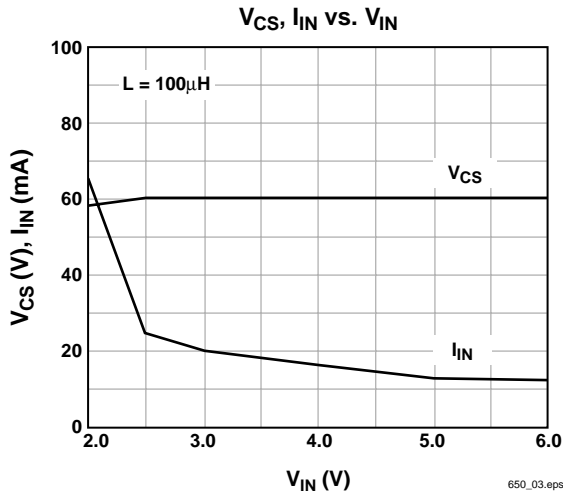
These are stress ratings only and functional operation is not implied. Exposure to absolute maximum ratings for prolonged time periods may affect device reliability.

Electrical Characteristics

Unless otherwise noted, $V_{DD} = 3.0V$, $R_{SW} = 750k\Omega$, $R_{EL} = 2.0M\Omega$, and $T_A = 25^\circ C$.

Parameter	Symbol	Conditions	Min	Typ	Max	Units
ON-resistance of MOS Switch	$R_{DS(ON)}$	$I = 100mA$		3.5	8	Ω
Output Voltage Regulation	V_{CS}	$V_{DD} = 2.0$ to $6.5V$	52	56	65	V
Output Voltage Peak-to-peak (in regulation)	$V_A - V_B$	$V_{DD} = 2.0$ to $6.5V$	104	112	120	V
Quiescent V_{DD} Supply Current, Disabled	I_{DDIS}	$V_{RSW-OSC} < 100mV$		50	200	nA
Input Current at V_{DD} Pin	I_{DD}	$V_{DD} = 3.0V$, See Figure 1		470	700	μA
Input Current at V_{DD} Pin	I_{DD}	$V_{DD} = 5.0V$, See Figure 2		500	750	μA
Input Current: I_{DD} Plus Inductor Current	I_{IN}	$V_{DD} = 3.0V$, See Figure 1		12		mA
V_{A-B} Output Drive Frequency	f_{EL}	$V_{DD} = 3.0V$, See Figure 1	300	370	430	Hz
Switching Frequency	f_{SW}	$V_{DD} = 3.0V$, See Figure 1	50	70	90	kHz
Switching Duty Cycle	D_{SW}	$V_{DD} = 3.0V$, See Figure 1		88		%

Typical Characteristics



Pin Descriptions

Pin Number	Name	Function
1	V_{DD}	Positive voltage supply for the IMP560. Inductor L may be connected here or to a separate unregulated supply.
2	R_{SW-OSC}	Switch-mode resistor pin. Switching frequency is determined by an external resistor, R_{SW} .
3	C_S	Boost converter storage capacitor. The voltage across the EL lamp is equal to twice the voltage at C_S .
4	L_X	Connection to flyback inductance, L.
5	GND	Ground pin.
6	V_B	EL lamp drive. The lamp is connected in a high-voltage bridge circuit with V_B providing the complementary connection to V_A . The peak-to-peak AC voltage across the EL lamp is thus two times V_{CS} .
7	V_A	EL lamp drive. (See above)
8	R_{EL-OSC}	The EL lamp oscillator frequency setting pin. The oscillator frequency is controlled by external resistor R_{EL} .

External Components

External Component	Description and Selection Guide
Diode	A fast reverse recovery diode, with $BV > 100$, such as a 1N4148.
Capacitor C_S	This is the high voltage capacitor that stores the inductive energy transferred through the diode. A 100 volt capacitor between 10nF and 100nF is recommended.
Resistor R_{EL}	The EL lamp oscillator frequency setting resistor. This resistor, connected between the R_{EL-OSC} pin and ground, provides an oscillator frequency inversely proportional to R_{EL} ; as R_{EL} increases, the EL lamp frequency decreases along with the current drawn by the lamp. Lamp color is also determined by this frequency. A 2M Ω resistor between the R_{EL-OSC} pin and the V_{DD} supply results in a lamp frequency around 350Hz: a 1M Ω resistor will give ≈ 700 Hz.
Resistor R_{SW}	Switching Oscillator frequency setting resistor. The switching oscillator resistor is connected between the R_{SW-OSC} pin and the V_{DD} supply. The switching frequency is inversely proportional to the resistor value, dropping as the resistance increases.
Inductor L	<p>The inductor provides the voltage boost needed by means of inductive “flyback”. The internal MOSFET switch alternately opens and closes the ground connection for the inductor at the L_X pin. When this internal switch opens, the inductor potential will forward-bias the diode and the current will pass through the storage capacitor C_S, charging it to a high voltage.</p> <p>Smaller inductors are preferred to prevent saturation. As the value of the inductor increases (and the series DC resistance of the inductor decreases), the switching frequency set by R_{SW} should be increased to prevent saturation. In general, smaller value inductors that can handle more current are more desirable when larger area EL lamps must be driven.</p>

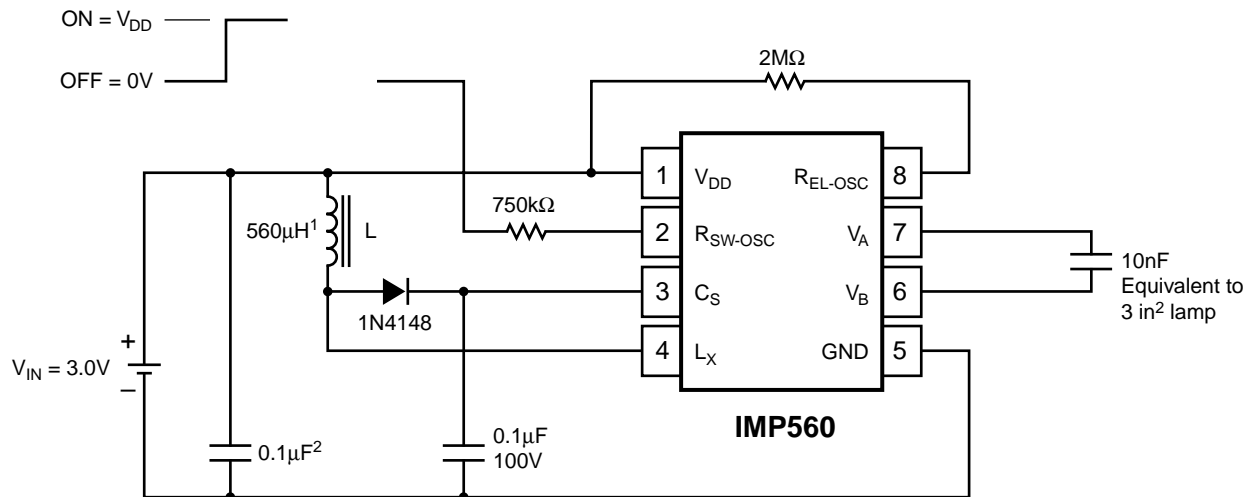
High-Voltages Present

The IMP560 generates high voltages and caution should be exercised.

Application Information

Test and Application Circuit, 3.0V

Figure 1 shows the IMP560 configured to drive a 3-square-inch EL lamp, represented as a 10nF capacitor.

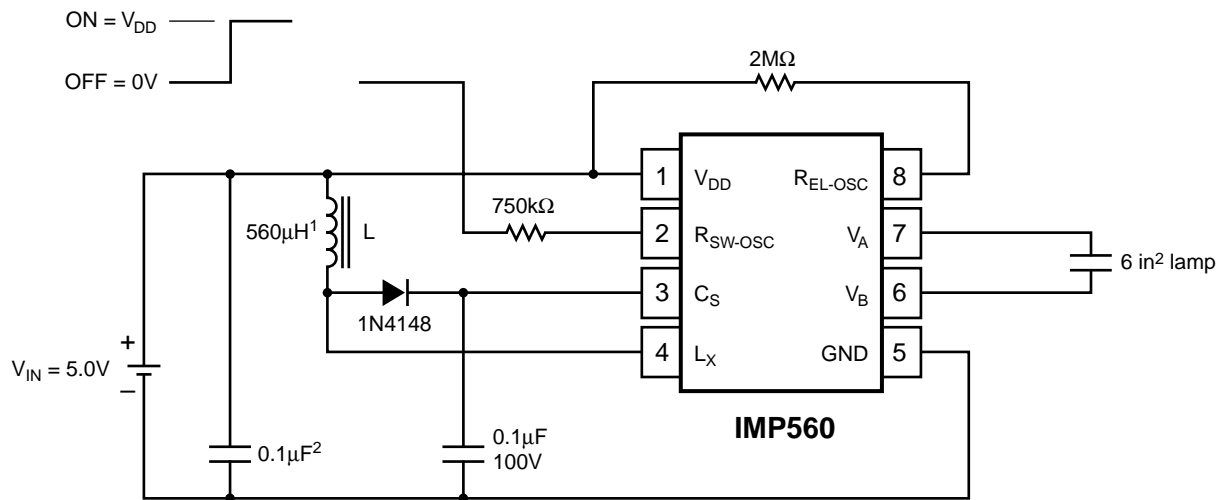


Note:

1. Murata part # LQH4N561K04 (DC resistance <math>< 14.5\Omega</math>)
2. Larger values may be required depending upon supply impedance.

560_09.eps

Figure 1. 3.0V Application



Note:

1. Murata part # LQH4N561K04 (DC resistance <math>< 14.5\Omega</math>)
2. Larger values may be required depending upon supply impedance.

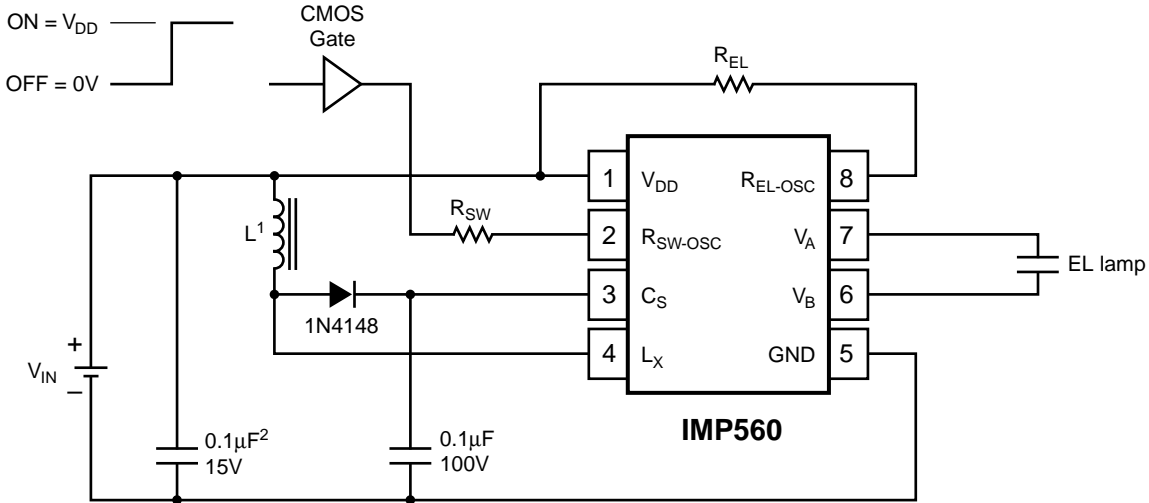
560_10.eps

Figure 2. 5.0V Application

Enable/Disable Operation

Figure 3 shows the IMP560 can be enabled via a logic gate that connects R_{SW} to V_{DD} , and disabled by connecting it to ground. R_{EL} may be connected either to V_{DD} or to the gate.

Enable/Disable Table	
R_{SW} Connection	IMP560 State
V_{DD}	Enabled
Ground	Disabled



Note:
 1. Murata part # LQH4N561K04 (DC resistance <14.5Ω)
 2. Larger values may be required depending upon supply impedance.

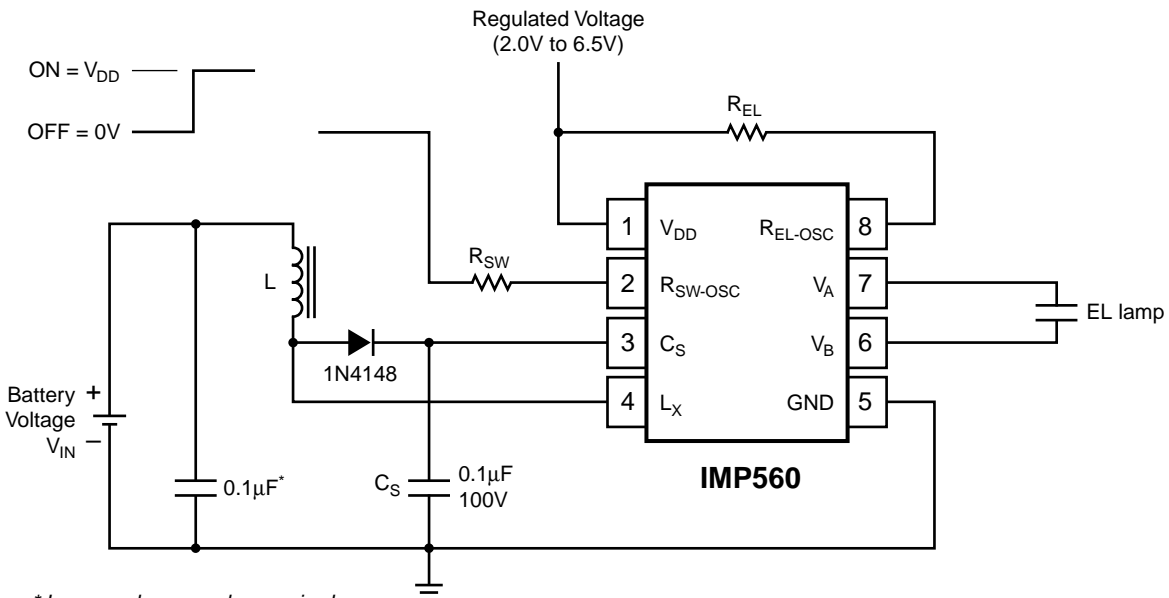
560_11.eps

Figure 3. Enable/Disable Operation

Dual Supply Operation with 1.5V Battery

The IMP560 can also be operate from a single battery cell when a regulated voltage higher than 2.0V is also available. The dual supply configuration, shown in Figure 4, uses the regulated voltage to operate the IMP560 while the energy for the high-voltage boost circuit comes from the battery. The current to run the internal logic is typically 420µA.

The circuit of Figure 4 can also be used with batteries that exceed 6.0V as long as V_{DD} does not exceed 6.5V.



* Larger values may be required depending upon supply impedance

560_12.eps

Figure 4. Dual Supply Operation with High Battery Voltages

POWER MANAGEMENT

High-Voltage EL Lamp Driver

The IMP803 is an Electroluminescent (EL) lamp driver with the four EL lamp driving functions on-chip. These are the switch-mode power supply, its high-frequency oscillator, the high-voltage H-bridge lamp driver and its low-frequency oscillator. The IMP803 drives EL lamps of up to 30nF capacitance to high brightness; EL lamps with capacitances greater than 30nF can be driven, but will be lower in light output. The typical regulated output voltage that is applied to the EL lamp is 180V peak-to-peak. The circuit requires few external components, a single inductor, single diode, two capacitors and three resistors. Two of these resistors set the frequency for two internal oscillators.

The IMP803 operates over a 2.0V to 6.5V supply voltage range. A regulated, low-power source can supply the low quiescent current of the IMP803. The inductor may be driven from an independent, unregulated supply voltage in dual supply applications.

An internal circuit shuts down the switching regulator when the lamp drive voltage reaches 180V peak-to-peak. This conserves power and extends battery life.

The IMP803 is available in MicroSO and SO-8 packages and in die or wafer form.

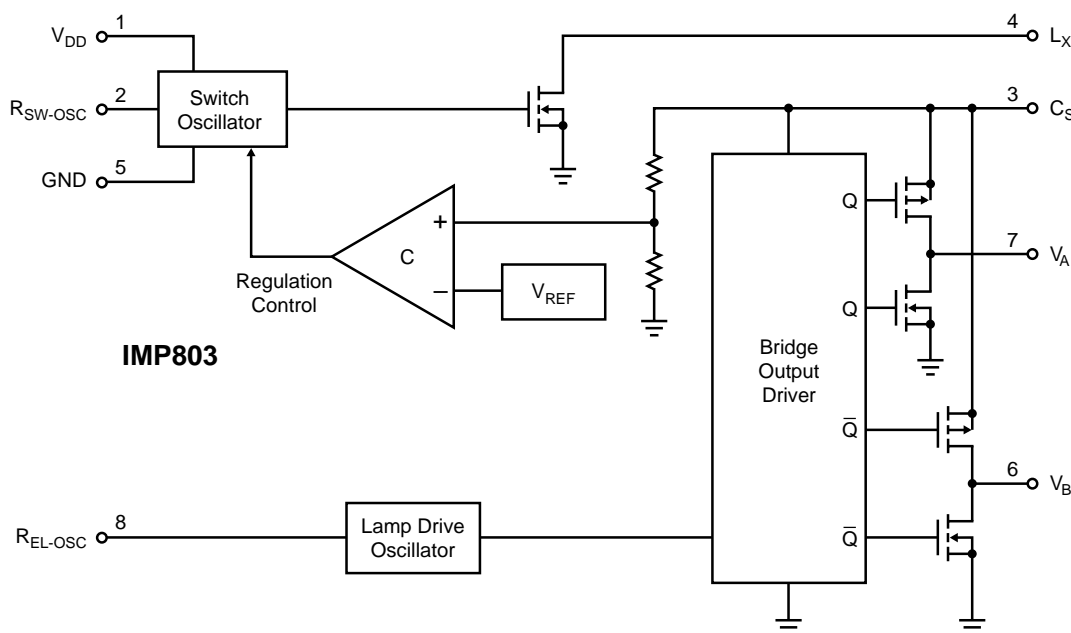
Key Features

- ◆ Low Power: 420µA typical V_{DD} current
- ◆ Wide operating voltage range - from 2.0V to 6.5V
- ◆ 180V peak-to-peak typical AC output voltage
- ◆ Large output load capability - drive lamps with more than 30nF capacitance
- ◆ Adjustable output lamp frequency for control of lamp color, lamp life, and power consumption
- ◆ Adjustable converter frequency to minimize power consumption
- ◆ Device can be Enabled/Disabled
- ◆ Low quiescent current – 20nA (disabled)
- ◆ High-Voltage CMOS Process
- ◆ MicroSO package option

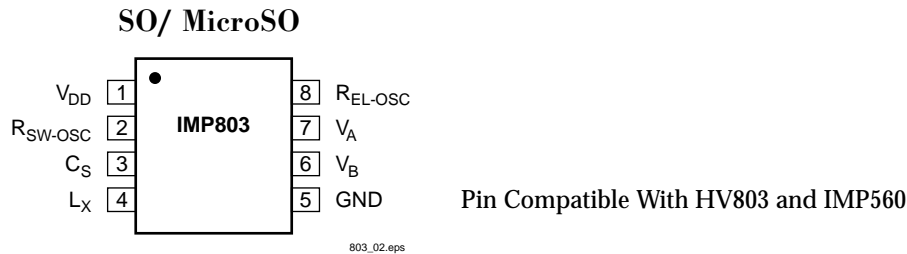
Applications

- ◆ GPS units/Pagers/Cellular phones
- ◆ PDAs/Handheld computers
- ◆ Safety illumination
- ◆ Portable instrumentation
- ◆ Battery-operated displays
- ◆ LCD modules
- ◆ Toys

Block Diagram



Pin Configuration



Ordering Information

Part Number	Input Voltage	Regulated Output Voltage	Temperature Range	Pins-Package
IMP803LG	2.0V to 6.5V	Yes	-40°C to +85°C	8-SO
IMP803IMA	2.0V to 6.5V	Yes	-40°C to +85°C	8-MicroSO
IMP803SX	2.0V to 6.5V	Yes	25°C	Dice

Add /T to ordering part number for Tape and Reel.

Absolute Maximum Ratings

V_{DD} , $V_{RSW-OSC}$ and $V_{REL-OSC}$	-0.5V to +7.0V
V_{CS} , L_X	-0.5V to +120V
Operating Temperature Range	-40°C to +85°C
Storage Temperature Range	-65°C to +150°C
Power Dissipation (SO)	400mW
Power Dissipation (MicroSO)	300mW
V_A , V_B	-0.5V to V_{CS} (pin 3)

Note: All voltages are referenced to GND.

These are stress ratings only and functional operation is not implied. Exposure to absolute maximum ratings for prolonged time periods may affect device reliability.

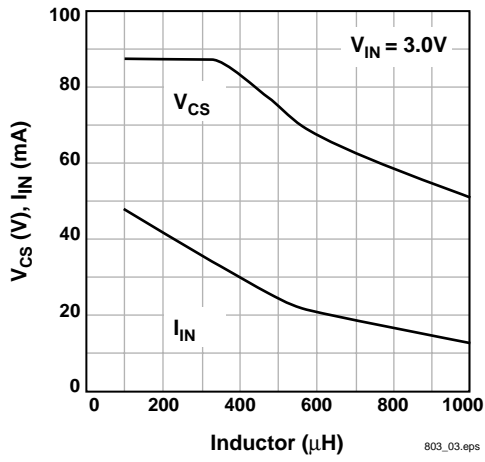
Electrical Characteristics

Unless otherwise noted, $V_{DD} = 3.0V$, $R_{SW} = 750k\Omega$, $R_{EL} = 2.0M\Omega$, and $T_A = 25^\circ C$.

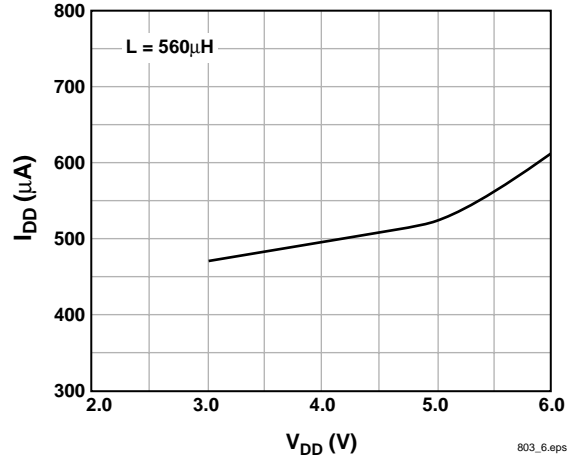
Parameter	Symbol	Conditions	Min	Typ	Max	Units
ON-resistance of MOS Switch	$R_{DS(ON)}$	$I = 100mA$		3.5	8	Ω
Output Voltage Regulation	V_{CS}	$V_{DD} = 2.0$ to $6.5V$	80	90	100	V
Output Voltage Peak-to-peak (in regulation)	$V_A - V_B$	$V_{DD} = 2.0$ to $6.5V$	160	180	200	V
Quiescent V_{DD} Supply Current, Disabled	I_{DDQ}	$V_{RSW-OSC} < 100mV$		20	200	nA
Input Current at V_{DD} Pin	I_{DD}	$V_{DD} = 3.0V$, See Figure 1		420	700	μA
Input Current at V_{DD} Pin	I_{DD}	$V_{DD} = 5.0V$, See Figure 2		500	750	μA
Input Current: I_{DD} Plus Inductor Current	I_{IN}	$V_{DD} = 3.0V$, See Figure 1		20	31	mA
Output Voltage at V_{CS}	V_{CS}	$V_{DD} = 3.0V$, See Figure 1	60	74	100	V
$V_{A,B}$ Output Drive Frequency	f_{EL}	$V_{DD} = 3.0V$, See Figure 1	300	370	430	Hz
Switching Frequency	f_{SW}	$V_{DD} = 3.0V$, See Figure 1	50	70	90	kHz
Switching Duty Cycle	D_{SW}	$V_{DD} = 3.0V$, See Figure 1		88		%

Typical Characteristics

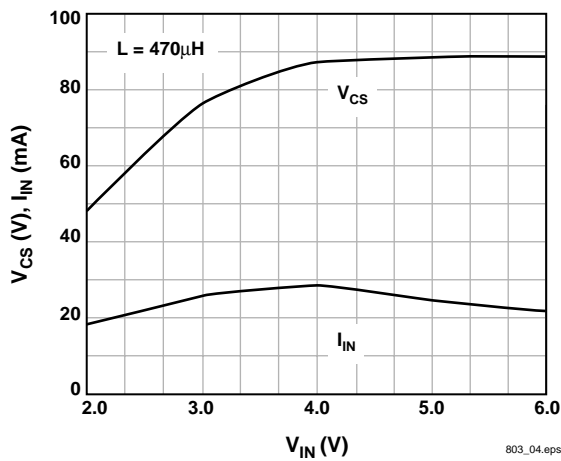
V_{CS} , I_{IN} vs. Inductor Value



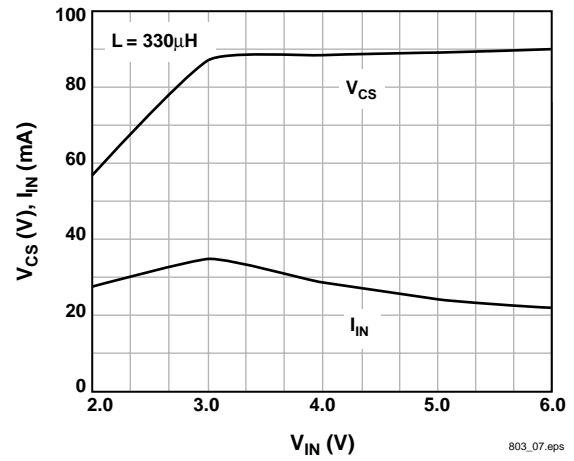
I_{DD} vs. V_{DD}



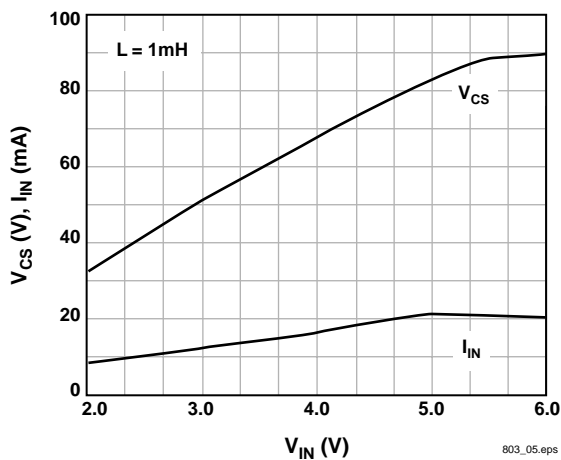
V_{CS} , I_{IN} vs. V_{IN}



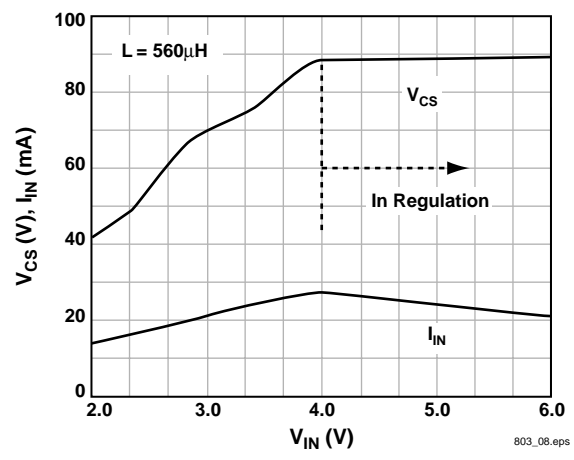
V_{CS} , I_{IN} vs. V_{IN}



V_{CS} , I_{IN} vs. V_{IN}



V_{CS} , I_{IN} vs. V_{IN}



Pin Descriptions

Pin Number	Name	Function
1	V_{DD}	Positive voltage supply for the IMP803. Inductor L may be connected here or to a separate unregulated supply.
2	R_{SW-OSC}	Switch-mode resistor pin. Switching frequency is determined by an external resistor, R_{SW} .
3	C_S	Boost converter storage capacitor. The voltage across the EL lamp is equal to twice the voltage at C_S .
4	L_X	Connection to flyback inductance, L.
5	GND	Ground pin.
6	V_B	EL lamp drive. The lamp is connected in a high-voltage bridge circuit with V_B providing the complementary connection to V_A . The peak-to-peak AC voltage across the EL lamp is thus two times V_{CS} .
7	V_A	EL lamp drive. (See above)
8	R_{EL-OSC}	The EL lamp oscillator frequency setting pin. The oscillator frequency is controlled by external resistor R_{EL} .

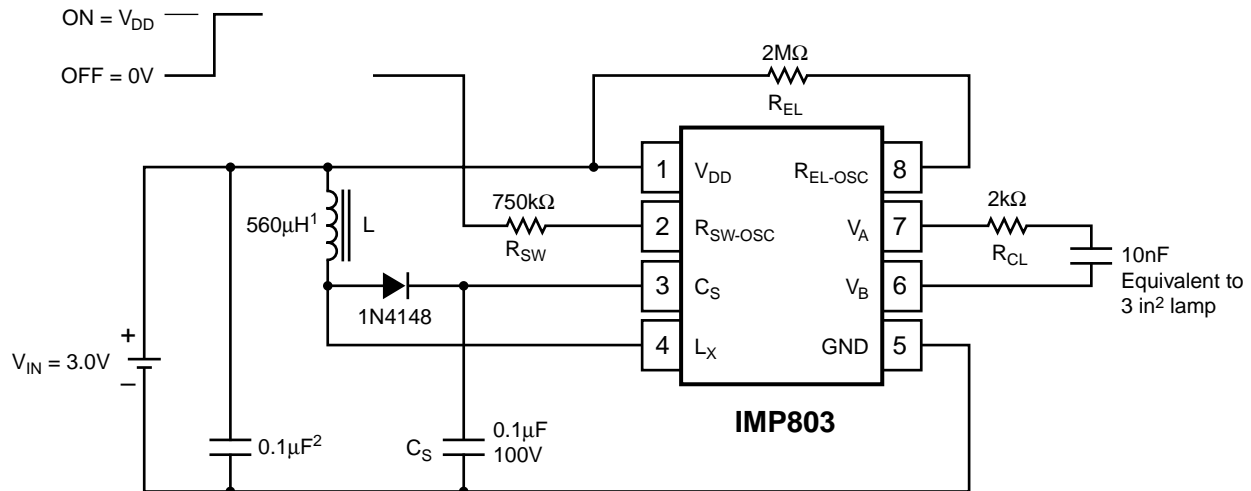
External Components

External Component	Description and Selection Guide
Diode	Catch diode. A fast reverse recovery diode, with $BV > 100$, such as a 1N4148.
Capacitor C_S	This is the high voltage capacitor that stores the inductive energy transferred through the catch diode. A 100 volt capacitor between 10nF and 100nF is recommended.
Resistor R_{EL}	The EL lamp oscillator frequency setting resistor. This resistor, connected between the R_{EL-OSC} pin and V_{DD} , provides an oscillator frequency inversely proportional to R_{EL} ; as R_{EL} increases, the EL lamp frequency decreases along with the current drawn by the lamp. Lamp color is also determined by this frequency. A 2M Ω resistor between the R_{EL-OSC} pin and the V_{DD} supply results in a lamp frequency around 350Hz: a 1M Ω resistor will give ≈ 700 Hz.
Resistor R_{SW}	Switching Oscillator frequency setting resistor. The switching oscillator resistor is connected between the R_{SW-OSC} pin and the V_{DD} supply. The switching frequency is inversely proportional to the resistor value, dropping as the resistance increases.
Inductor L	<p>The inductor provides the voltage boost needed by means of inductive “flyback”. The internal MOSFET switch alternately opens and closes the ground connection for the inductor at the L_X pin. When this internal switch opens, the inductor potential will forward-bias the catch diode and the current will pass through the storage capacitor C_S, charging it to a high voltage.</p> <p>Smaller inductors are preferred to prevent saturation. As the value of the inductor increases (and the series DC resistance of the inductor decreases), the switching frequency set by R_{SW} should be increased to prevent saturation. In general, smaller value inductors that can handle more current are more desirable when larger area EL lamps must be driven.</p>
Lamp, R_{CL}	An external resistor (R_{CL}) in series with the lamp will protect the output drivers from high transient currents during lamp commutation.

Application Information

Test and Application Circuit, 3.0V

Figure 1 shows the IMP803 configured to drive a 3-square-inch EL lamp, represented as a 10nF capacitor. With a 3.0V input, the EL lamp will be driven to moderate brightness.



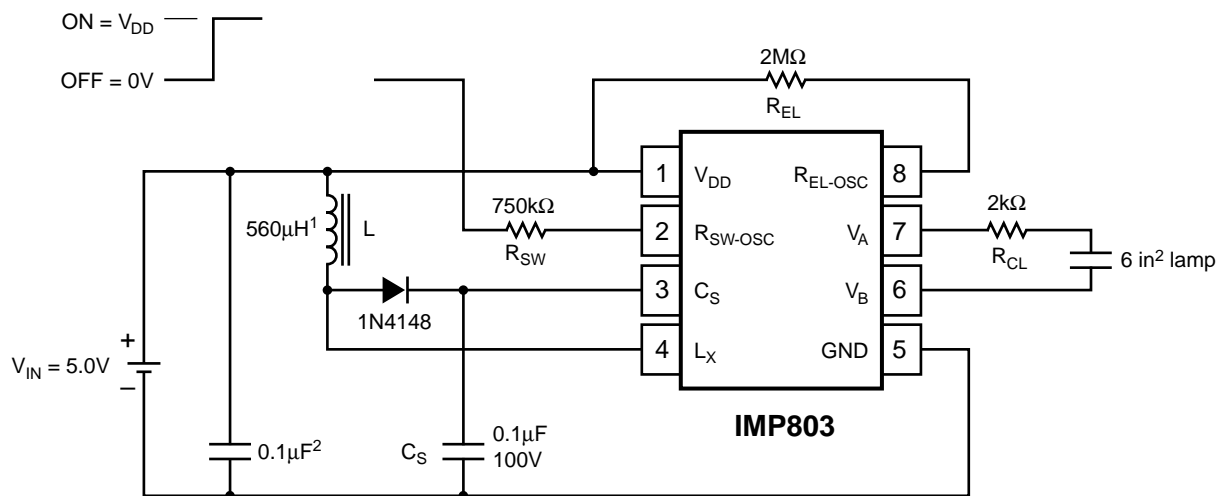
Note:
 1. Murata part # LQH4N561K04 (DC resistance <math>< 14.5 \Omega</math>)
 2. Larger values may be required depending upon supply impedance.

803_09.eps

Figure 1. 3.0V Application

Test and Application Circuit, 5.0V

Figure 2 shows a 5.0V input application driving a 6-square-inch EL lamp.



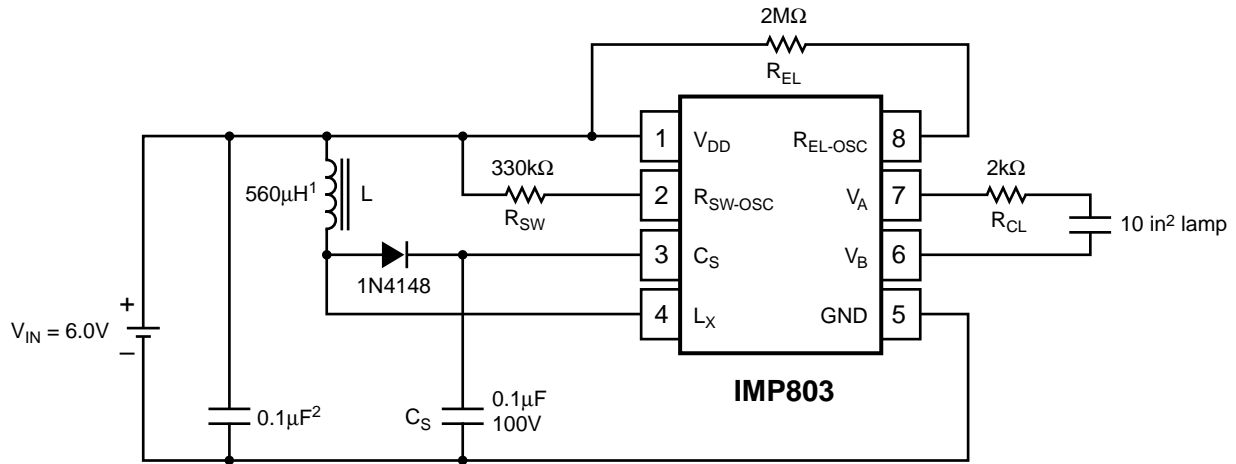
Note:
 1. Murata part # LQH4N561K04 (DC resistance <math>< 14.5 \Omega</math>)
 2. Larger values may be required depending upon supply impedance.

803_10.eps

Figure 2. 5.0V Application

Test and Application Circuit, 6.0V

At higher input voltage levels, the IMP803 will drive large EL lamps. Figure 3 shows a 6.0V circuit configuration that will drive a 10 square-inch lamp.



- Note:
1. Murata part # LQH4N561K04 (DC resistance <14.5 Ω)
 2. Larger values may be required depending upon supply impedance.

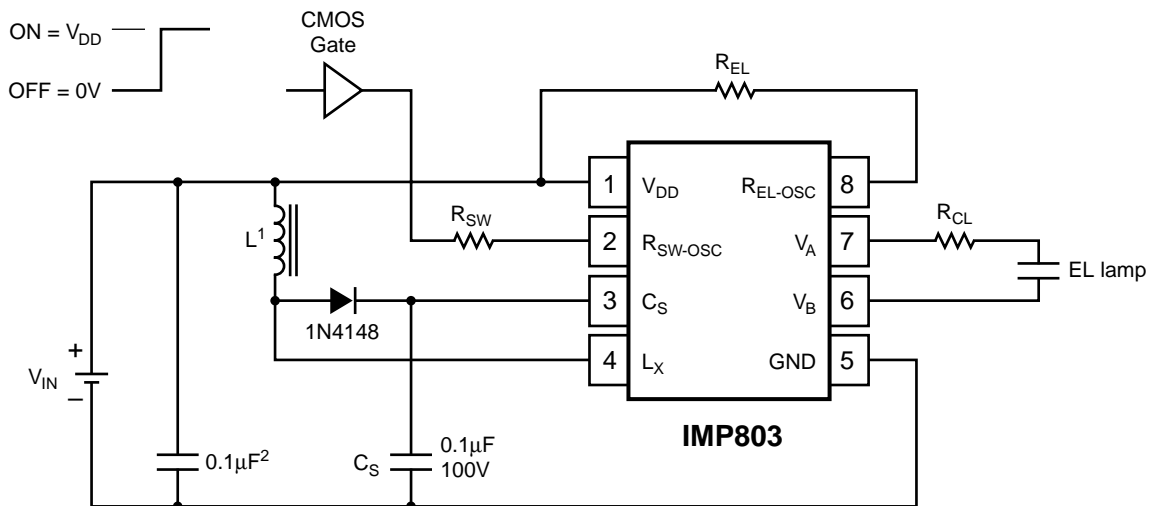
803_11.eps

Figure 3. 6.0V Application

Enable/Disable Operation

Figure 4 shows that the IMP803 can be enabled via a logic gate that connects R_{SW} to V_{DD}, and disabled by connecting it to ground.

Enable/Disable Table	
R _{SW} Connection	IMP803 State
V _{DD}	Enabled
GND	Disabled



- Note:
1. Murata part # LQH4N561K04 (DC resistance <14.5 Ω)
 2. Larger values may be required depending upon supply impedance.

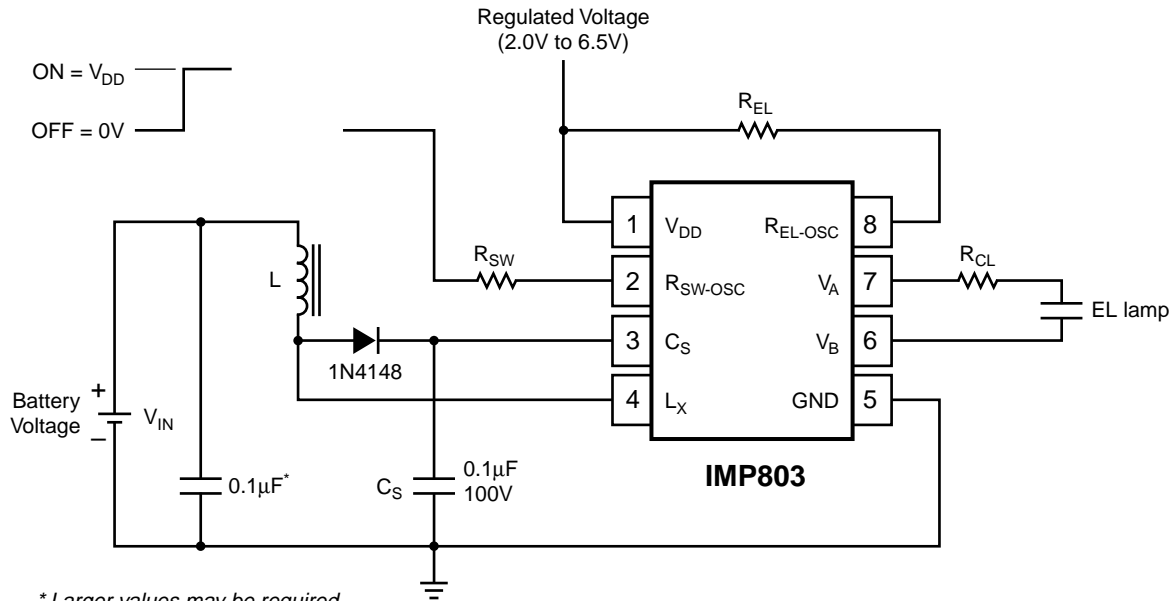
803_12.eps

Figure 4. Enable/Disable Operation

Dual Supply Operation with 1.5V Battery

The IMP803 can also be operate from a single battery cell when a regulated voltage higher than 2.0V is also available. This dual supply configuration, shown in *Figure 5*, uses the regulated voltage to operate the IMP803 while the energy for the high-voltage boost circuit comes from the battery.

The circuit of *Figure 5* thus allows operation with batteries that are below the 2V minimum specification or above the 6.0V maximum operating voltage.



* Larger values may be required depending upon supply impedance

803_13.eps

Figure 5. Dual Supply Operation

Switch Resistance

The IMP803 inductor switch resistance is typically below 3.5Ω, as shown in *Figure 6*.

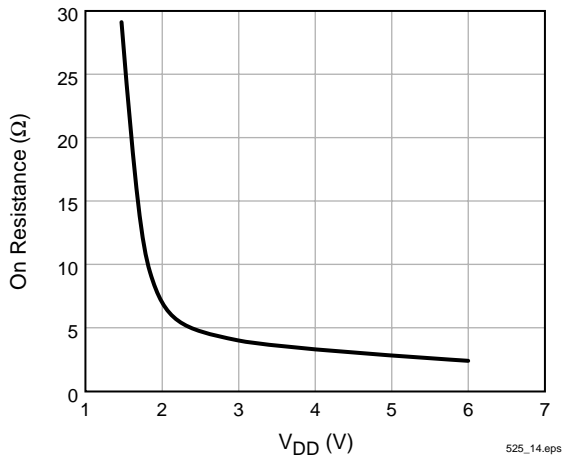


Figure 6. Boost Switch On Resistance

High-Voltages Present

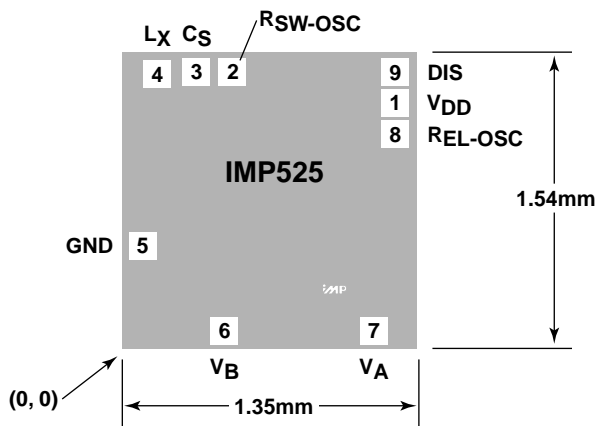
The IMP803 generates high voltages and caution should be exercised.

POWER MANAGEMENT

IMP525 Single Cell Battery Powered EL Lamp Driver

General Information

Die Thickness:	25 mils (625 microns)
Bond Wire Size:	1.0 mil (25 microns)
Back Side Metal:	None
Back Side Potential:	Ground
Die Attach Method:	Conductive Adhesive
Bond Pad Metal:	Aluminum, 1% Silicon, 1/2% Copper
Bond Pad Size:	100 microns per side
Die Size:	1.35mm x 1.54mm



Pad Description

Pad Number	Name	Function
1	V _{DD}	Positive voltage supply.
2	R _{SW-OSC}	Switch-mode oscillator frequency setting pad.
3	C _S	Boost converter storage capacitor pad.
4	L _X	Inductor pad.
5	GND	Ground pad.
6	V _B	EL lamp drive.
7	V _A	EL lamp drive.
8	R _{EL-OSC}	EL lamp oscillator frequency setting pad.
9*	DIS	Disable pad. DIS = HIGH disables chip.

* See Ordering Information table

Pad Location¹

Pad Number	X (microns)	Y (microns)
1	1153	1092
2	476	1226
3	314	1226
4	143	1216
5	111	460
6	397	112
7	1104	112
8	1153	958
9	1153	1226

Notes 1. To bonding pad center

Ordering Information

Part Number	Pad Number	Description	
		Disable Pad Active	Disable Pad Not Active
IMP525/D	9		●
IMP525/D1	9	●	

525 Die_101

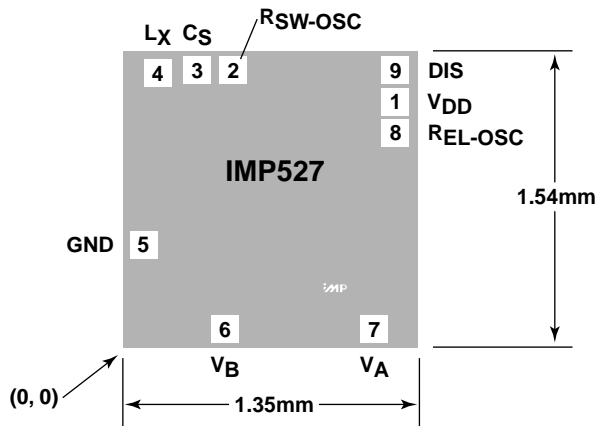
POWER MANAGEMENT

IMP527

Single Cell Battery Powered EL Lamp Driver, 180V_{PP} Drive

General Information

Die Thickness:	25 mils (625 microns)
Bond Wire Size:	1.0 mil (25 microns)
Back Side Metal:	None
Back Side Potential:	Ground
Die Attach Method:	Conductive Adhesive
Bond Pad Metal:	Aluminum, 1% Silicon, 1/2% Copper
Bond Pad Size:	100 microns per side
Die Size:	1.35mm x 1.54mm



Pad Description

Pad Number	Name	Function
1	V _{DD}	Positive voltage supply.
2	R _{SW-OSC}	Switch-mode oscillator frequency setting pad.
3	C _S	Boost converter storage capacitor pad.
4	L _X	Inductor pad.
5	GND	Ground pad.
6	V _B	EL lamp drive.
7	V _A	EL lamp drive.
8	R _{EL-OSC}	EL lamp oscillator frequency setting pad.
9*	DIS	Disable pad. DIS = HIGH disables chip.

* See Ordering Information table

Pad Location¹

Pad Number	X (microns)	Y (microns)
1	1153	1092
2	476	1226
3	314	1226
4	143	1216
5	111	460
6	397	112
7	1104	112
8	1153	958
9	1153	1226

Notes 1. To bonding pad center

Ordering Information

Part Number	Disable Pad Number	Description	
		Disable Pad Active	Disable Pad Not Active
IMP527/D	9		●
IMP527/D1	9	●	

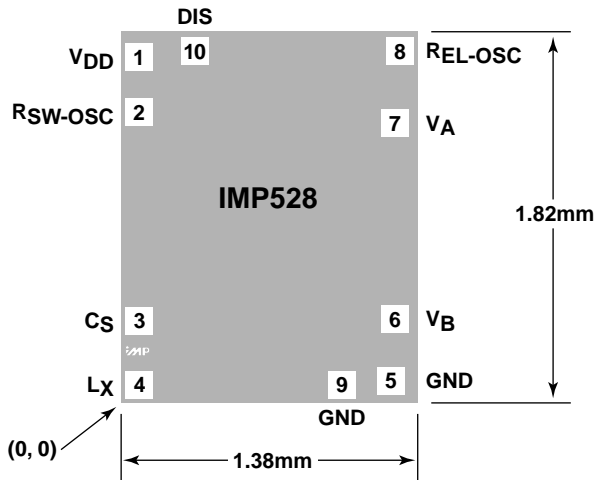
527 Die_101

POWER MANAGEMENT

IMP528 High-Voltage EL Lamp Driver, 220V_{PP} Drive

General Information

Die Thickness:	25 mils (625 microns)
Bond Wire Size:	1.0 mil (25 microns)
Back Side Metal:	None
Back Side Potential:	Ground
Die Attach Method:	Conductive Adhesive
Bond Pad Metal:	Aluminum, 1% Silicon, 1/2% Copper
Bond Pad Size:	100 microns per side
Die Size:	1.38mm x 1.82mm



Pad Description

Pad Number	Name	Function
1	V _{DD}	Positive voltage supply.
2	R _{SW-OSC}	Switch-mode oscillator frequency setting pad.
3	C _S	Boost converter storage capacitor pad.
4	L _X	Inductor pad.
5	GND	Ground pad.
6	V _B	EL lamp drive.
7	V _A	EL lamp drive.
8	R _{EL-OSC}	EL lamp oscillator frequency setting pad.
9	GND	Ground pad.
10*	DIS	Disable pad. DIS = HIGH disables chip.

* See Ordering Information table

Pad Location¹

Pad Number	X (microns)	Y (microns)
1	152	1480
2	152	1253.5
3	152	387.75
4	152	122.5
5	1198.5	140
6	1215	395
7	1215	1208.5
8	1234	1508.5
9	998	122.5
10	382	1553.5

Notes 1. To bonding pad center

Ordering Information

Part Number	Disable Pad Number	Description	
		Disable Pad Active	Disable Pad Not Active
IMP528/D	10		●
IMP528/D1	10	●	

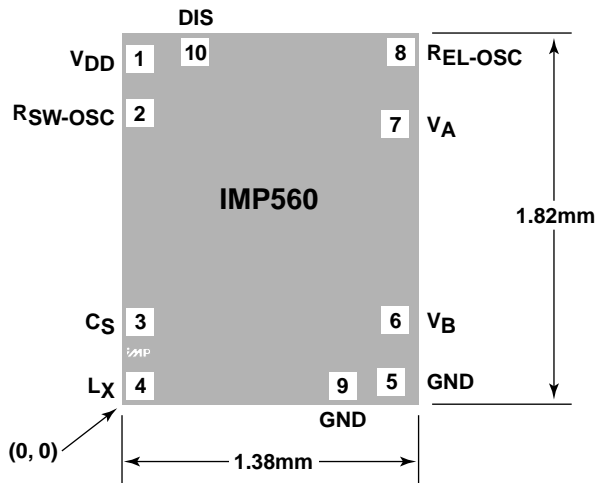
528 Die_01

POWER MANAGEMENT

IMP560 Power Efficient EL Lamp Driver

General Information

Die Thickness:	25 mils (625 microns)
Bond Wire Size:	1.0 mil (25 microns)
Back Side Metal:	None
Back Side Potential:	Ground
Die Attach Method:	Conductive Adhesive
Bond Pad Metal:	Aluminum, 1% Silicon, 1/2% Copper
Bond Pad Size:	100 microns per side
Die Size:	1.38mm x 1.82mm



Pad Description

Pad Number	Name	Function
1	V _{DD}	Positive voltage supply.
2	R _{SW-OSC}	Switch-mode oscillator frequency setting pad.
3	C _S	Boost converter storage capacitor pad.
4	L _X	Inductor pad.
5	GND	Ground pad.
6	V _B	EL lamp drive.
7	V _A	EL lamp drive.
8	R _{EL-OSC}	EL lamp oscillator frequency setting pad.
9	GND	Ground pad.
10*	DIS	Disable pad. DIS = HIGH disables chip.

* See Ordering Information table

Pad Location¹

Pad Number	X (microns)	Y (microns)
1	152	1480
2	152	1253.5
3	152	387.75
4	152	122.5
5	1198.5	140
6	1215	395
7	1215	1208.5
8	1234	1508.5
9	998	122.5
10	382	1553.5

Notes 1. To bonding pad center

Ordering Information

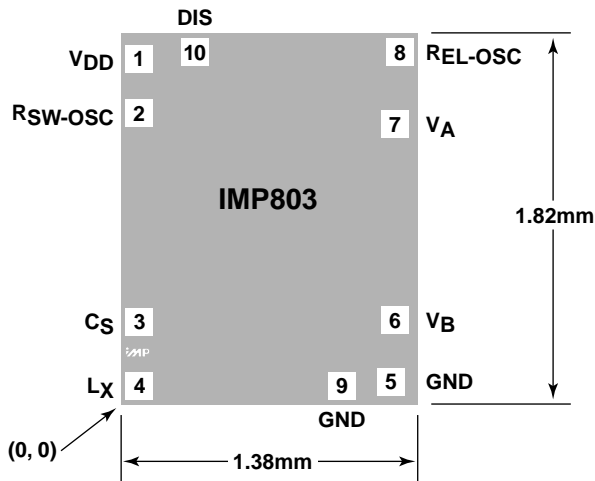
Part Number	Pad Number	Description	
		Disable Pad Active	Disable Pad Not Active
IMP560/D	10		●
IMP560/D1	10	●	

POWER MANAGEMENT

IMP803 High-Voltage EL Lamp Driver

General Information

Die Thickness:	25 mils (625 microns)
Bond Wire Size:	1.0 mil (25 microns)
Back Side Metal:	None
Back Side Potential:	Ground
Die Attach Method:	Conductive Adhesive
Bond Pad Metal:	Aluminum, 1% Silicon, 1/2% Copper
Bond Pad Size:	100 microns per side
Die Size:	1.38mm x 1.82mm



Pad Description

Pad Number	Name	Function
1	V _{DD}	Positive voltage supply.
2	R _{SW-OSC}	Switch-mode oscillator frequency setting pad.
3	C _S	Boost converter storage capacitor pad.
4	L _X	Inductor pad.
5	GND	Ground pad.
6	V _B	EL lamp drive.
7	V _A	EL lamp drive.
8	R _{EL-OSC}	EL lamp oscillator frequency setting pad.
9	GND	Ground pad.
10*	DIS	Disable pad. DIS = HIGH disables chip.

* See Ordering Information table

Pad Location¹

Pad Number	X (microns)	Y (microns)
1	152	1480
2	152	1253.5
3	152	387.75
4	152	122.5
5	1198.5	140
6	1215	395
7	1215	1208.5
8	1234	1508.5
9	998	122.5
10	382	1553.5

Notes 1. To bonding pad center

Ordering Information

Part Number	Pad Number	Description	
		Disable Pad Active	Disable Pad Not Active
IMP803SX	10		●
IMP803/D1	10	●	

Electroluminescent Lamp Driver Evaluation Board

Introduction

This Application Note introduces an Evaluation Board for IMP EL driver ICs. It is supplied with the IMP803 but can also be used with the IMP560 and IMP525: all 3 have identical pinouts.

EL Lamps and Drivers

An electroluminescent (EL) lamp consists of a phosphor coating on a dielectric that is sandwiched between two conductors. Electrically, it looks like a capacitor. Such a lamp requires drive from a high alternating voltage source in order to emit light. This can be obtained from IMP integrated circuits IMP803, IMP560 and IMP525 that convert low voltages into appropriate high-voltage waveforms.

Small EL lamps exhibit about 2 to 6nF/in². IMP Driver ICs are capable of powering EL lamps that have total equivalent load capacitances up to 30nF, so this works out to a maximum of around 15 square inches. “Powering” in this context means enabling enough light for the application, which can range from LCD backlights (relatively bright in a handheld device) to pagers (medium-bright, in a poorly-lit room), to night-lights (faint, in a dark room).

IMP Driver IC System Diagram

As shown in *Figure 1*, these ICs contain a high-voltage MOSFET switch, an output H-bridge, and oscillators to drive each. The switch, combined with an external inductor and diode, form a step-up (boost) converter that transforms the input voltage to 45-90 volts across capacitor C_S . This, in turn, is switched from one side of the load (the EL lamp) to the other by a commutating bridge, driven by its own oscillator. This action causes the lamp to experience twice the C_S value (i.e. 90-180 volts peak-to-peak) with no DC component.

A typical application uses a switch frequency of 80kHz and bridge commutation frequency of 360Hz. These frequencies are controllable via external resistors; R_{SW} for the boost converter and R_{EL} for the output driver. R_{EL} influences brightness, color and EL lamp life. R_{SW} controls converter efficiency. Both affect power consumption.

IMP Driver IC System Diagram

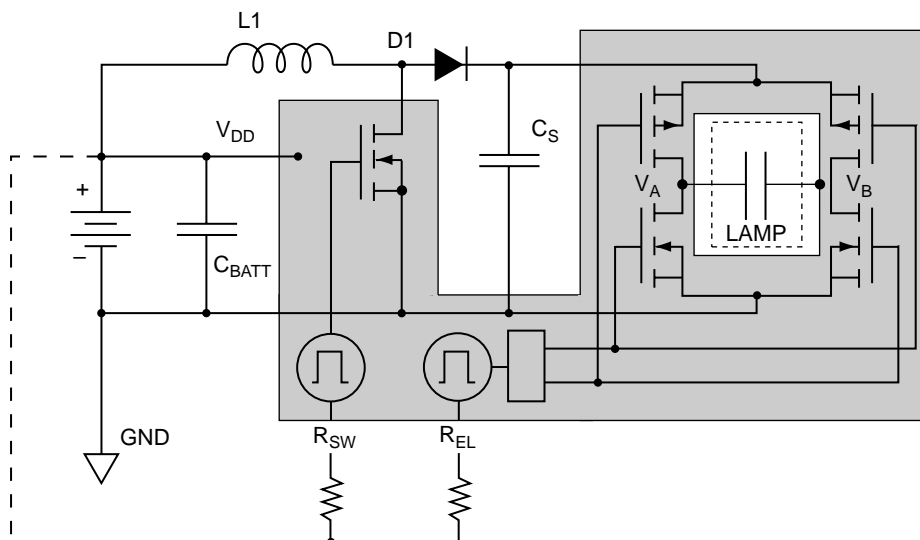


Figure 1. Circuitry in gray is on-chip.

Driver Variations

The IMP803, 560 and 525 have an internal regulating circuit (see *Figure 2*), that is useful where V_{IN} is expected to change considerably, as with an aging battery: as V_{IN} falls, V_{OUT} (and brightness) will remain substantially unaffected.

Table 1 is a general comparison of IMP EL Lamp drivers. It facilitates choices based on number of batteries, size of display, and regulation. Required display brightness will also need to be factored into the choice.

Table 1. General Characteristics of IMP EL Lamp Drivers

Device	V_{IN}	V_{OUT}	Regulated Output	Max. Switch R(on)
IMP803	2.4 – 6.5V	180V _{PP}	Yes	8Ω
IMP560	2.4 – 6.5V	120V _{PP}	Yes	8Ω
IMP525	0.9 – 2.5V	112V _{PP}	Yes	15Ω

AN01.01

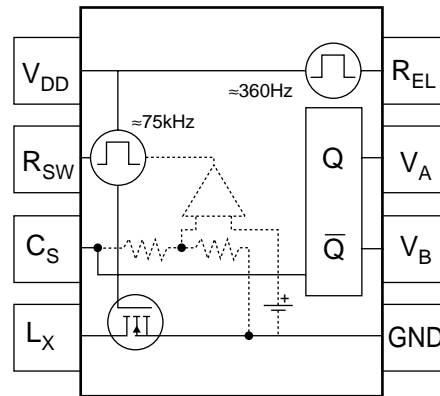


Figure 2. Block Diagram for IMP circuits. Dotted components are equivalent to regulation circuitry (see text).

Basic Circuit, Plus Variations

In normal operation, V_{DD} is one or two 1.5V cells and L1 is a tiny ferrite-bobbin inductor. R_{SW} and R_{EL} control their respective oscillators. If a logic-controllable shutdown is desired, R_{SW} may be switched between V_{DD} and GND ($I_{DDQ} = 1\mu\text{A}$ max.). Conversely, if shutdown is via V_{DD} , R_{SW} should then be connected to V_{DD} as shown by the dotted line in *Figure 3*.

R_{CL} is included to protect the bridge against peak currents during commutation. A value of 500Ω to $2\text{k}\Omega$ is suitable.

In use, the inductor current can reach several tens of milliamperes, so in single-battery applications it is recommended that the low-current shutdown capability of the driver IC be utilized. This is done by connecting R_{SW} (point A on the schematics) to either V_{DD} (ON) or GND (OFF). With power source(s) connected, shutdown (standby) current is typically much lower than $1\mu\text{A}$.

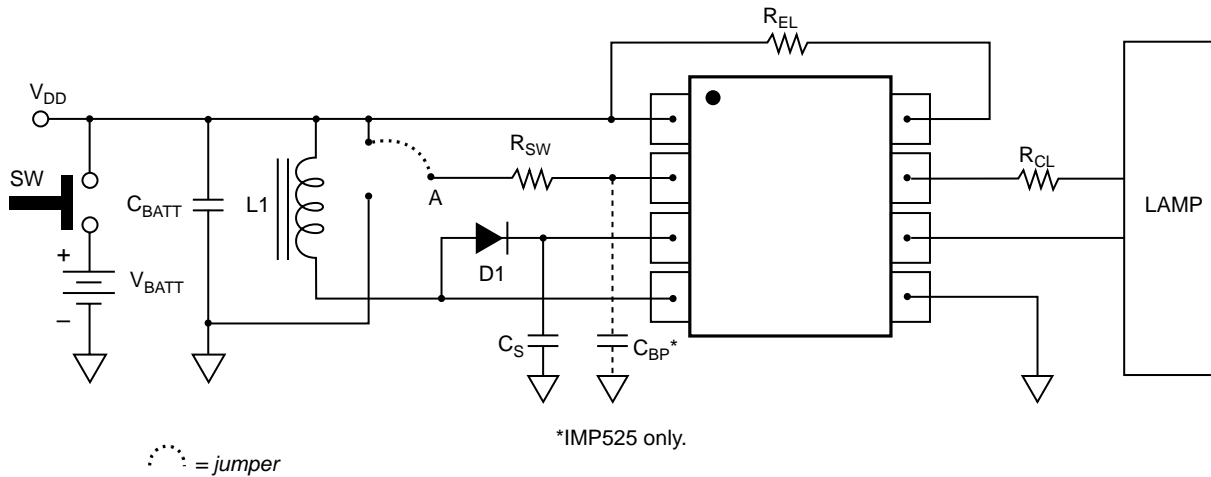


Figure 3. Basic EL Lamp Driver.

Reducing Component Count

Having said that keeping R_{CL} is a good idea, it is true that removing as many components as possible may also be desirable. For the IMP803, R_{EL} and R_{SW} may be combined as shown in *Figure 4*. Varying R_{EL} causes a visible change in brightness and color, but a similar variation in R_{SW} (affecting oscillator frequency and power consumption) is much less noticeable. Combining the two is thus

a valid way to save a resistor. The bypass capacitor C_{BP} (IMP525 only) reduces display flicker in noisy environments, such as when there is no ground plane.

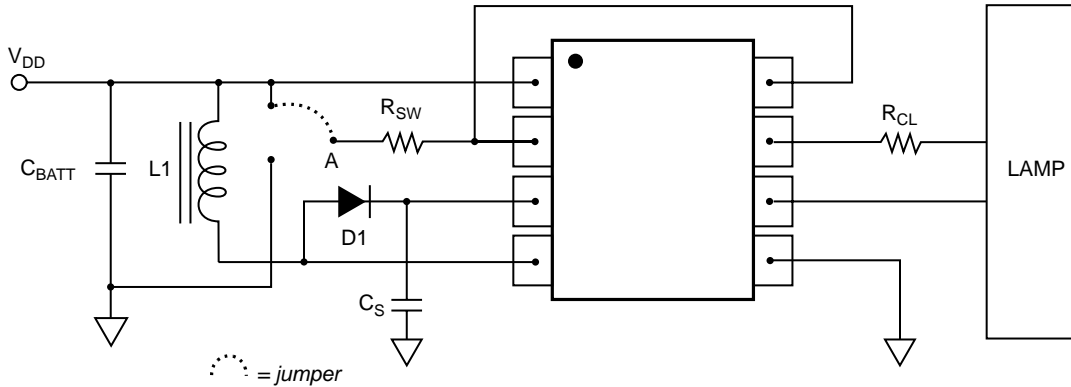
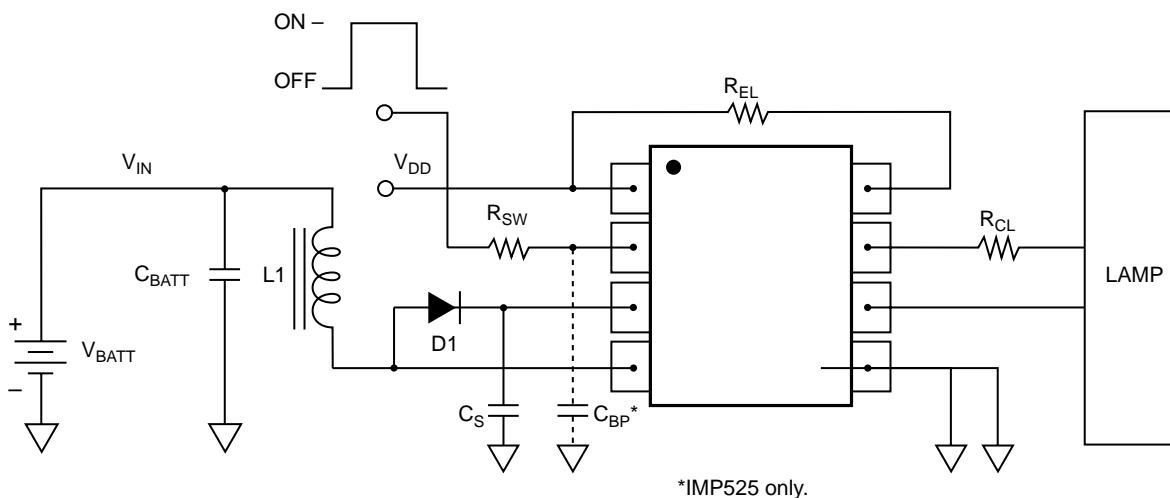


Figure 4. Using R_{SW} to supply current for both switch and EL oscillators, and also serve as a low-current on/off switch (IMP803 only).

Using the circuit in *Figure 5*, one can utilize an available V_{IN} that is higher or lower than the allowable V_{DD} . The logic shutdown may also be separated from V_{DD} . Such arrangements are helpful when the inductor supply is too low for the IC, or the display size requires a voltage that is too high for the IC.

A higher V_{IN} will need a higher switching frequency to keep the inductor out of saturation. In all cases, note the presence of HIGH VOLTAGE!



*IMP525 only.

Figure 5. General Circuit, where chip V_{DD} , on/off logic and V_{IN} are all different.

Evaluation Board

The ELD002 is a PC board for evaluation and experimentation purposes. More compact arrangements are easily achieved by using surface-mounted components exclusively. The various possible connections mirror the options discussed in the data sheet and the Application Note. While the IMP803 is supplied on the board, other pin-compatible drivers may be substituted.

The two dark patches are the connections for the EL lamp which are made using conductive double-sided tape. The display itself is held down with ordinary double-sided tape. Taping is advantageous for several reasons, among which are that lamps with

staked connecting terminals generally cost more, and they are a possible site for mechanical (and thus electrical) failure.

As a general precaution, note that HIGH VOLTAGE exists on the board; around 180V or so. The current level is low so there is no danger, except possible pain if a tender skin area or open cut contacts the HV sections.

There are extra holes for capacitors (if needed), and the hole spacings are wide enough to accommodate 1/4W resistors. Corner mounting holes have also been provided.

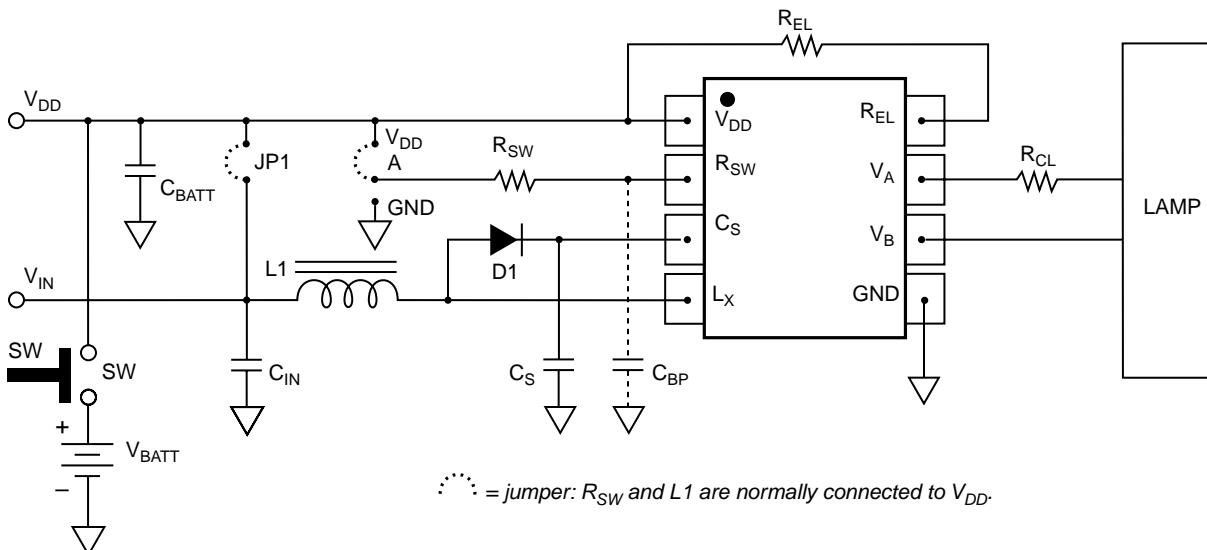
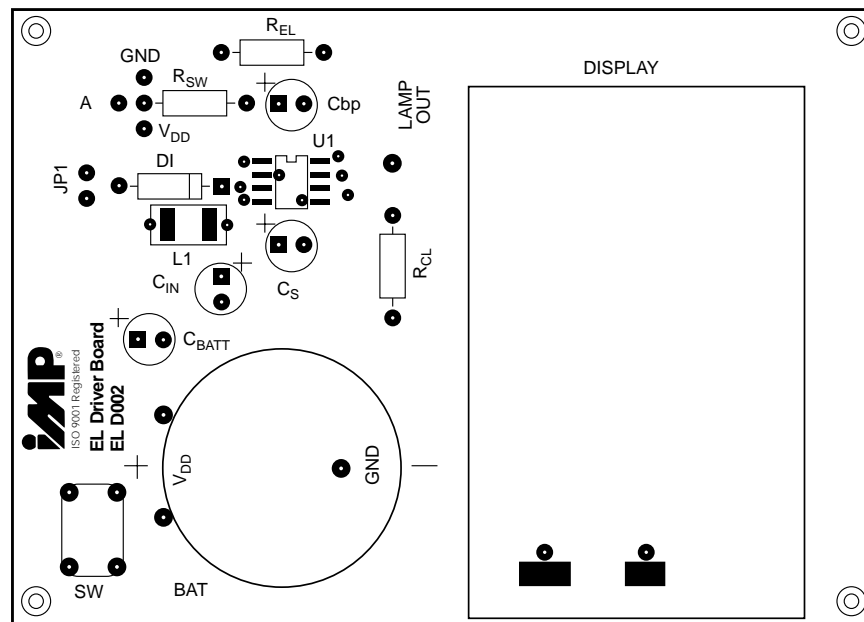


Figure 6. Evaluation Board Layout and Schematic.

Some Battery Considerations

To keep the board light in weight, a Li-Mn power source was selected. When energized, the drain from the circuit is around 22mA, thus the CR battery chemistry is preferred over the BR for its superior pulse performance. If long-term continual illumination is anticipated and space is not an issue, alkaline batteries may be more economical.

With the IMP803 and 560 μ H inductor supplied, regulation begins at about 3-3.5V, but display illumination appears virtually

unchanged above 2.7V. When choosing the battery chemistry, it is a good idea to match the cell “plateau” voltages to this. For example, a typical NiCad plateau is 1.2V under load, so more than 2 cells would be needed. Alkaline plateaus are somewhat higher, and they differ with size, shape and duty, so 2 cells could suffice. Li-Mn coin cells have their voltage plateau under load at about 2.85 volts. They can drop lower, but they also return to close to 3V when the load is removed.

Additional Points

- 1) To experiment with the *Figure 4* scheme, a jumper may be run from the rightmost pad of R_{EL} to the leftmost pad of C_{BP} (with the + above it). Start with an R_{SW} of 750k Ω . Short leads and a ground plane are more critical in this arrangement.
- 2) C_S should be 10nF - 100nF.
- 3) The IMP803, IMP560 and IMP525 datasheets show performance with different inductors. For example, high-voltage regulation is reached earlier with lower L, but this requires more current. This may be partially offset by adjustment of the oscillator resistors.
- 4) To experiment with multiple supplies, the appropriate jumpers may be removed.
- 5) The inclusion of R_{CL} should be stressed: while 500 Ω to 10k Ω has been used, 2k Ω is the best all-around value.

Layout Rules for Other Arrangements

- 1) A ground plane is recommended to keep stray high frequencies confined. In a very small area, the need for a ground plane may be nil. A totally surface-mount arrangement would make such a plane difficult anyway.
- 2) Locate high voltages away from the high-impedance elements R_{EL} and R_{SW} .
- 3) Make sure that C_S has a rating of at least 100V.
- 4) The diode should have good reverse-recovery characteristics (the general-purpose 1N4148 is adequate) and should be rated for pulsed BV > 100V for the IMP803, and pulsed BV > 75V for the IMP560 and IMP525.
- 5) Shutdown by a logic-level signal is possible by connecting R_{SW} to ground (R_{SW} is normally connected to V_{DD}). This on/off logic uses only 1 μ A max. when connected at this location.
- 7) Required voltage ratings for the capacitors other than C_S are flexible, and need only reflect actual stresses plus a safety margin.

Bill of Materials for ELD001

Component	Description	Manufacturer	Part Number
Resistors ($\pm 5\%$)	See Table, below		
Capacitors ($\pm 20\%$)	See Table, below	Murata	RPE121/122 Series
Switch	SPST, momentary	Panasonic	P8008S
Battery	3.0V Li-Mn Coin	Sony Panasonic	CR2450-HE4 CR2354-IGU
Inductor	L1 = 560 μ H	Murata	LQH4N561K04
Diode	D1 = 1N4148		
Lamp	1.3" x 2.05"	MetroMark or other	
Conductive Tape	Connects display	Adhesives Research	ARclad 8001
Double-Sided Tape	Holds display down	3M	Type 665

Key to Components and Ratings

Component	Value	Function	Comments
R _{SW}	30k Ω to 3M Ω	Sets switch osc. frequency.	Decrease R to increase frequency.
R _{EL}	500k Ω to 10M Ω	Sets bridge osc. frequency.	Decrease R to increase frequency.
R _{CL}	500 Ω to 2k Ω	Limits output current.	Protects IC.
C _S	0.01 μ F to 0.1 μ F, 100V	Stores high voltage.	Use low values for large lamps.
C _{BATT}	0.1 μ F, 10V	Supply bypass.	Keeps supply impedance low.
C _{BP}	1nF, 10V	Lowers noise at R _{SW} .	IMP525 only.
C _{IN}	0.1 μ F to 22 μ F	Supply bypass.	Keeps supply impedance low.
L1	100 μ H to 1mH	Stores energy.	Small L, high f increases V _{OUT} .
D1	100V, 10mA (1N4148)	Passes energy from L to C _S .	Use fast recovery type.

APPENDIX: Introduction to EL Lamps

Chemical compounds, called phosphors, glow when energy is applied to them. This excitation energy can come from conducted or radiated electrons, or an electric field. A common example of this process is found in the emitted (radiated) electrons that impinge on the dots and stripes of color monitors and TVs, whose phosphors emit everything from pure colors to white light, depending on their formulations.

Backlights and lamps generally are simpler, employing a manganese-activated zinc sulfide phosphor (ZnS:Mn) that is excited by a high-voltage (> 40V) AC electric field (DC can shorten the lamp life). Fabrication involves depositing the phosphor as a thin film onto a BaTiO₃ dielectric between conducting planes, like a capacitor: one of the planes is the transparent conductor, indium tin oxide (ITO). The lamp color depends on phosphor formulation, but also on its physical realization (i.e. encapsulation, resins, dyes, etc.), plus the characteristics of the drive circuitry.

The IMP line of drivers is targeted mainly at applications like backlight EL and stand-alone pre-printed or segmented lamps. Backlights are used with the Liquid-Crystal Displays found in cellular telephones, pagers, Personal Digital Assistants (PDAs), and general-purpose local lighting applications where low power consumption without heat is important (e.g. airline cockpits, medical instrumentation).

The excitation required for lamps ranges from tens to hundreds of volts, at frequencies from 60Hz to a few kHz. Each display has an optimum combination depending on size, color, efficiency and desired brightness.

In general, the changes in brightness with frequency and voltage are nearly linear. These facts allow tradeoffs. For example, if going above a certain voltage is not allowed, an increase in drive frequency may achieve the same result.

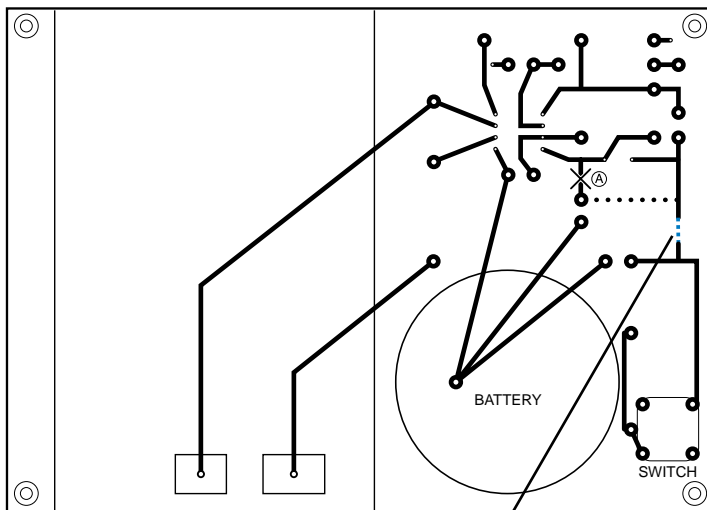
Addendum

The new evaluation board ELD002 is now available and will be sent out to all new purchasers. This Addendum will serve to explain the differences and update the information in AN-1.

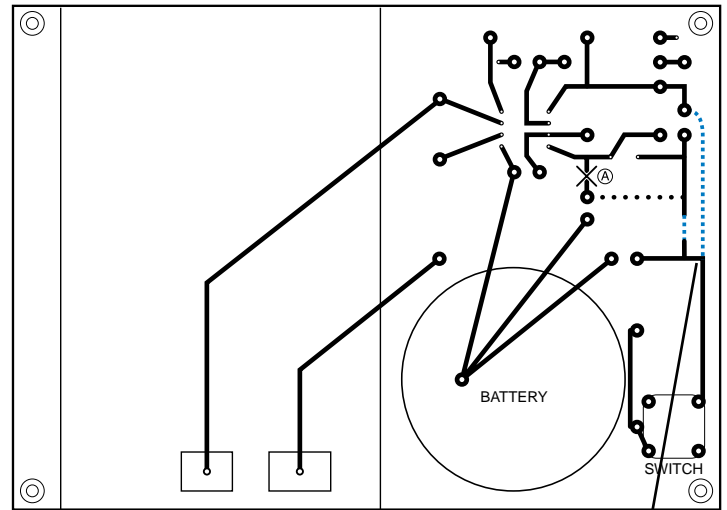
Changes

The diagrams below show the basic wiring of ELD001 (see AN-1, Figure 6) on the left and ELD002 on the right. The difference is that, with ELD002, the 3V cell is switched to the V_{DD} pin, and this voltage only goes to the inductor if JP1 is connected. If JP1 is open, an alternate voltage can be used to power the inductor.

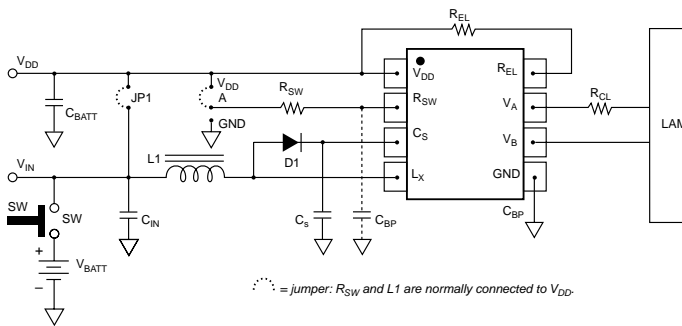
In contrast, the ELD001 switched power to the inductor, and to V_{DD} only if JP1 was connected. This was intended to demonstrate the logic-level shutdown ability of the IMP803: by using the pushbutton for the heavy current to the inductor, the V_{DD} pin could be tied to a voltage source and the chip enabled/disabled by a logic level of V_{DD} or ground applied to R_{SW} . The ELD002 board allows both features to be exercised. For ELD001 users who wish to modify their boards, the changes are shown below.



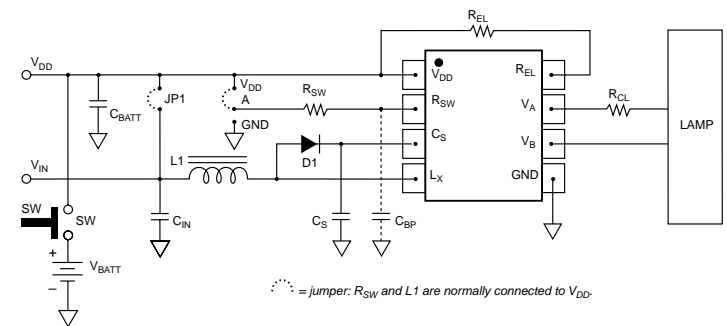
Cut the trace at this point.



Extend the trace (using wire) and connect at this point.



ELD001



ELD002

Updates

- 1) I_{DDQ} is listed as $1\mu A$ max. (AN-1, pp 3, 6, 7). Extensive testing has shown this to be much too conservative: $25nA$ is much more typical.
- 2) In using R_{SW} to shut-down the IMP803 (only $25nA$), R_{EL} can remain connected to the V_{DD} pin; only 1 resistor then needs to be switched.
- 3) Under some circumstances, R_{CL} can be omitted. Consult IMP for details.
- 4) For single-battery systems (the vast majority), the capacitor shown on the diagram as C_{IN} is not needed. For cases where it is needed, further "surgery" is required: cut the trace shown as \textcircled{A} and reconnect it as per the dotted line.

EL Driver Demonstration PC Boards, IMP-DBM and IMP-DBS

Introduction

These Demonstration Boards provide a platform for demonstration and experimentation with IMP's EL lamp drivers IMP803, IMP560 and IMP525. The PC board has space for all of the components required for a complete application circuit. In addition, compact size facilitates their use in prototype systems.

For normal operation, the enable pad (EN), the V_{DD} pad and the V_L pad are all connected to the positive supply voltage. If the board is located far from the supply, a $10\mu\text{F}/10\text{V}$ tantalum capacitor from V_L to GND should be used to keep supply impedance low (This cap, or its equivalent, is normally present in a manufactured circuit). Also, better noise immunity may be achieved by utilizing separate wires for the V_L and V_{DD} connections.

The C_{BATT} capacitor is used to bypass the supply pin of the IC. The C_{SW} capacitor (IMP525 only) is utilized to reduce noise on the high impedance R_{SW} pin. C_{SW} should never be greater than 100pF since this can result in instability of the 525's internal oscillator.

The layout was designed to reduce the effects of noise through use of a ground plane and by separation of the high-current components (inductor, diode, and reservoir capacitor) from the high-impedance portion of the circuit (the high-value frequency-setting resistors). Additionally, the lengths of high-current traces were minimized.

If parts are replaced or exchanged by hand-soldering, care should be taken to thoroughly clean the residual flux from the board surface. Otherwise, resultant leakage currents may prevent proper operation of the part. The tight spacing and high impedances of input nodes on the PCB exacerbate this effect. The predominant impact of PCB leakage is a shift in the switch and commutation frequencies away from their designed values due to leakage currents from the R_{SW} and R_{EL} pins.

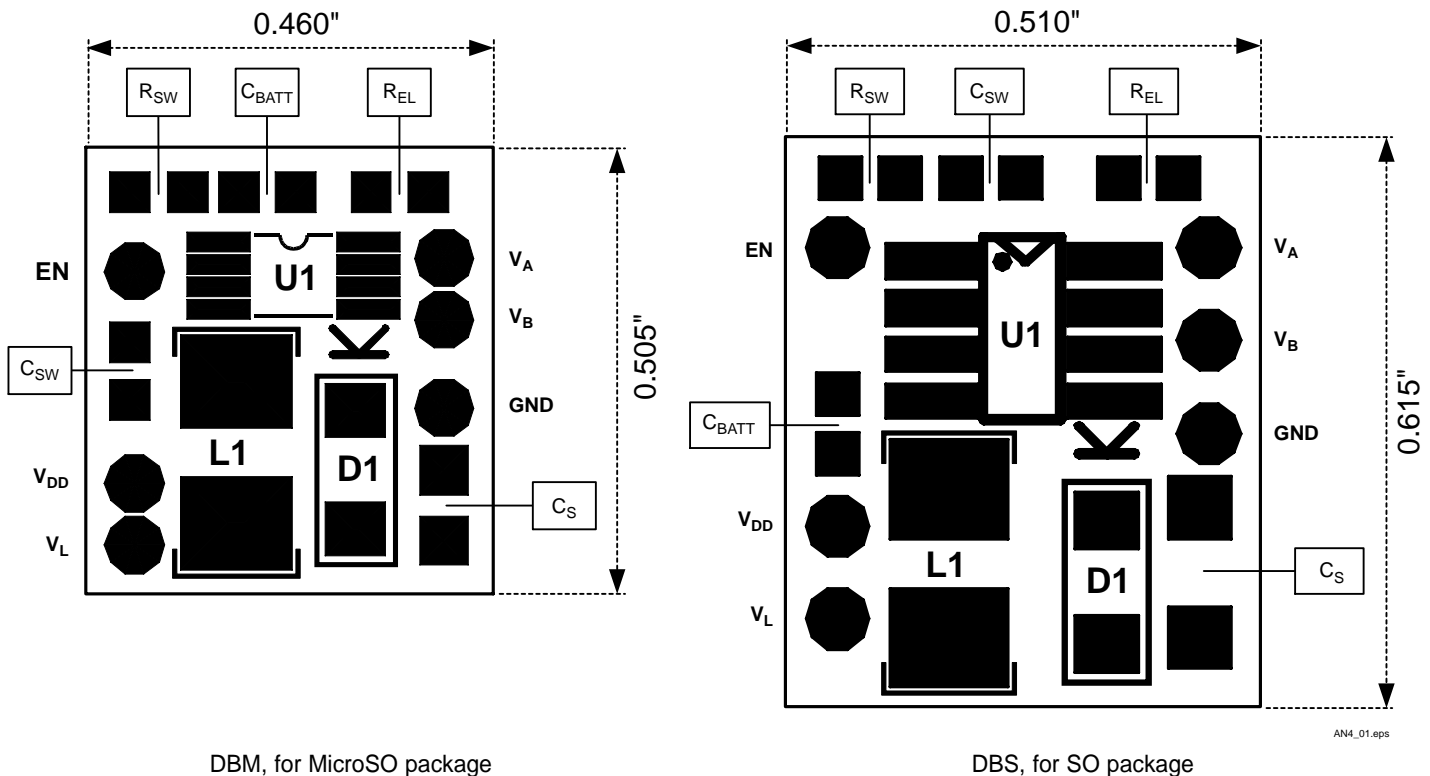


Figure 1. Top View of Printed Circuit Board

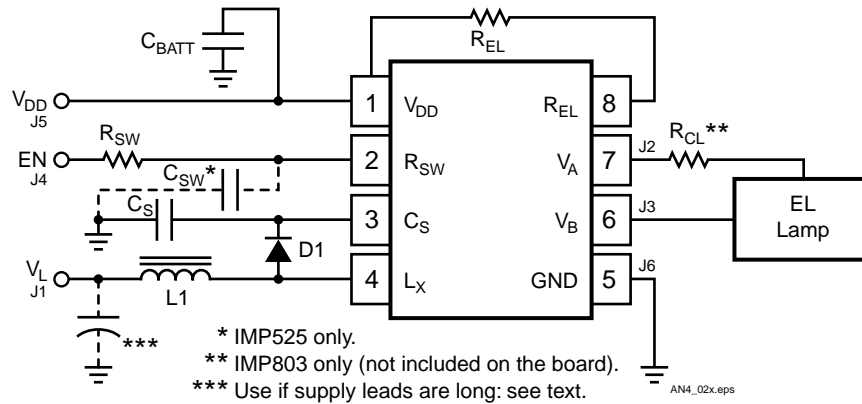


Figure 2. Demonstration Board Schematic.

Table 1. Bill of Materials (use as required)

Component	Package	Manufacturer and Part Number	IMP803	IMP560	IMP525
R _{SW}	0603	Any	750kΩ	750kΩ	1MΩ
R _{EL}	0603	Any	2MΩ	2MΩ	1MΩ
R _{CL}	0603	Any	510Ω	—	—
L1	1812	Murata LQH4N561K04	560μH	560μH	560μH
C _S	0805	NovaCap 0805B683K101NT	68nF/100V	68nF/100V	68nF/100V
D1	SOD80	4148-type	100V	75V	75V
C _{BATT}	0603	Any	100nF	100nF	100nF
C _{SW}	0603	Any	—	—	100pF, max

AN04.101

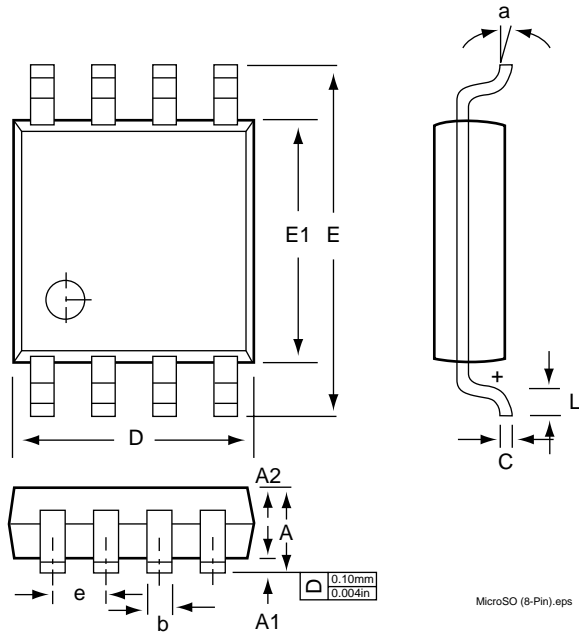
Table 2. Component Description Table

Component	Function	Comments
R _{SW}	Sets switch frequency	Decreasing R increases frequency.
R _{EL}	Sets commutation frequency	Decreasing R increases frequency.
R _{CL}	Limits output current	Optional <i>external</i> part: protects bridge if V(C _S) > 80V (IMP803 only).
L1	Boost inductor	Delivers energy to C _S .
C _S	Reservoir capacitor	Delivers energy to commutating bridge.
C _{SW}	Noise reduction capacitor	Optional, use if flickering is observed (IMP525 only).
C _{BATT}	Supply bypass capacitor	Optional (use if missing from external circuit)
D1	Catch diode	Fast recovery diode recommended. Observe BV _{REV} .

AN04.102

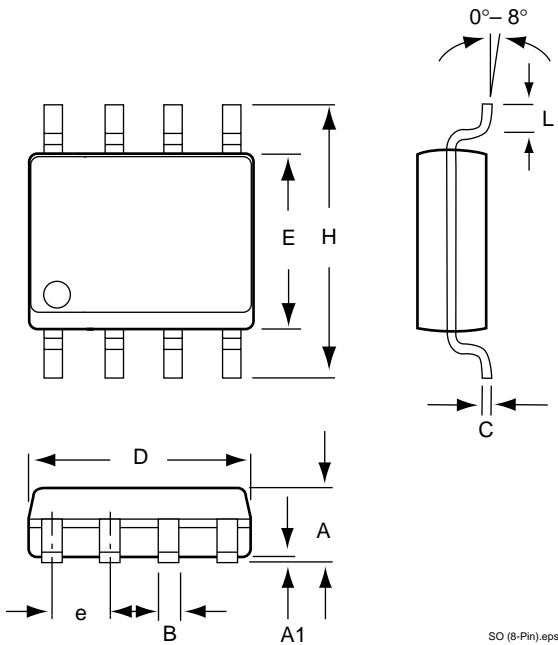
Package Dimensions

MicroSO (8-Pin)



Parts/Reel	3000
------------	------

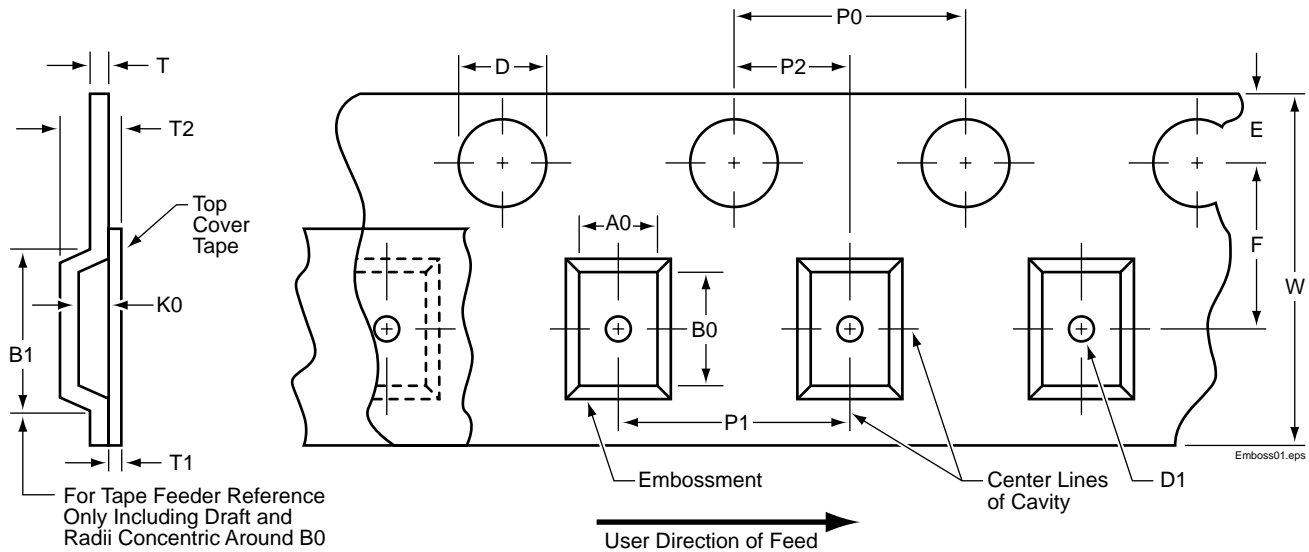
SO (8-Pin)



Parts/Reel	3000
------------	------

	Inches		Millimeters	
	Min	Max	Min	Max
MicroSO (8-Pin)				
A	—	0.0433	—	1.10
A1	0.0020	0.0059	0.050	0.15
A2	0.0295	0.0374	0.75	0.95
b	0.0098	0.0157	0.25	0.40
C	0.0051	0.0091	0.13	0.23
D	0.1142	0.1220	2.90	3.10
e	0.0256 BSC		0.65 BSC	
E	0.193 BSC		4.90 BSC	
E1	0.1142	0.1220	2.90	3.10
L	0.0157	0.0276	0.40	0.70
a	0°	6°	0°	6°
SO (8-Pin)				
A	0.053	0.069	1.35	1.75
A1	0.004	0.010	0.10	0.25
B	0.013	0.020	0.33	0.51
C	0.007	0.010	0.19	0.25
e	0.050		1.27	
E	0.150	0.157	3.80	4.00
H	0.228	0.244	5.80	6.20
L	0.016	0.050	0.40	1.27
D	0.189	0.197	4.80	5.00

Tape Schematic⁵



Embossed Tape — Constant Dimensions

Tape Size	D	E	P0	P2	T Max.	T1 Max.
8mm and 12mm	$1.5^{+0.10}_{-0.0}$ ($0.59^{+0.004}_{-0.0}$)	1.75 ± 0.10 (0.069 ± 0.004)	4.0 ± 0.10 (0.157 ± 0.004)	2.0 ± 0.05 (0.079 ± 0.002)	0.600 (0.024)	0.10 (0.004)

ELD/B_102.ai3

Embossed Tape — Variable Dimensions

Tape Size	A0, B0, K0	B1 See Note 4	D1 See Note 3	F	T2	P1	W
8mm 1/2 Pitch	See Note 1	4.55 (0.179)	1.0 (0.039)	3.5 ± 0.05 (0.138 ± 0.002)	2.5 Max. (0.098)	2.0 ± 0.10 (0.079 ± 0.004)	$8.0^{+0.3}_{-0.1}$ ($0.315^{+0.012}_{-0.004}$)
8mm						4.0 ± 0.10 (0.157 ± 0.004)	
12mm	See Note 1	8.2 (0.323)	1.5 (0.059)	5.5 ± 0.05 (0.217 ± 0.002)	6.5 Max. (0.256)	4.0 ± 0.10 (0.157 ± 0.004)	12.0 ± 0.30 (0.472 ± 0.012)
12mm Double Pitch						8.0 ± 0.10 (0.315 ± 0.004)	

ELD/B_103.ai3

Notes: 1. A0, B0 and K0 are determined by the maximum dimensions to the ends of the terminals extending from the component body and / or the body dimensions of the component. The clearance between the ends of the terminals or body of the component to the sides and depth of the cavity (A0, B0 and K0) must be within 0.05mm (0.002) minimum and 0.50mm (0.020) maximum. The clearance allowed must also prevent rotation of the component within the cavity of not more than 20 degrees (see Component Rotation).

2. Tape with components shall pass around radius.

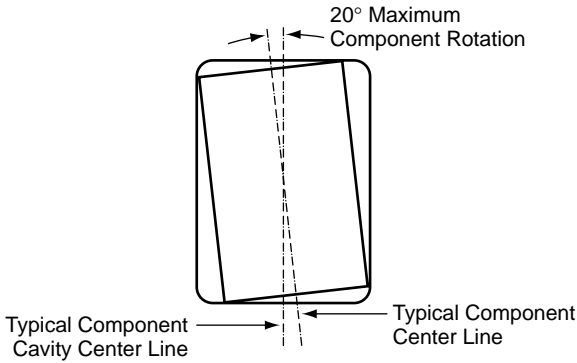
3. The embossment hole location shall be measured from the spocket hole controlling the location of the embossment. Dimensions of embossment location and hole location shall be applied independent of each other.

4. B1 dimension is a reference dimension for tape feeder clearance only.

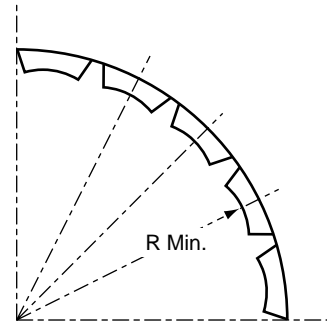
5. Electronic Industries Association, Standard EIA-481-1.

Tape Layout

Component Rotation

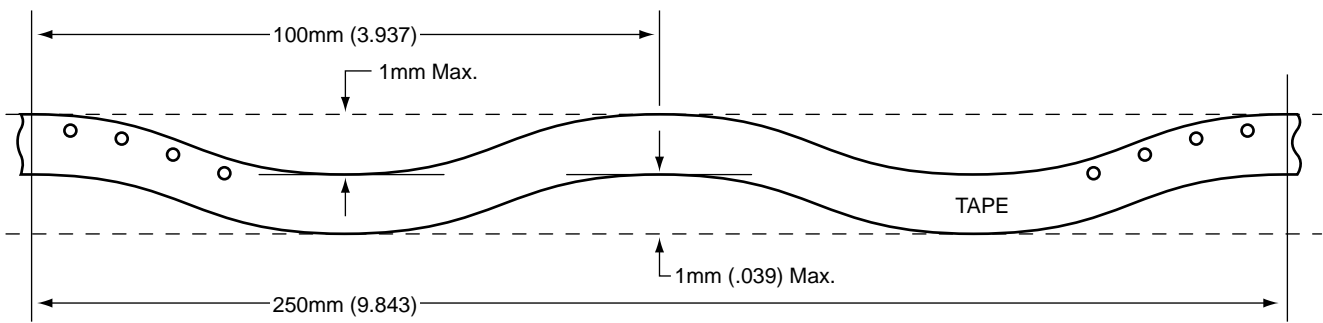


Bending Radius



Emboss04.eps

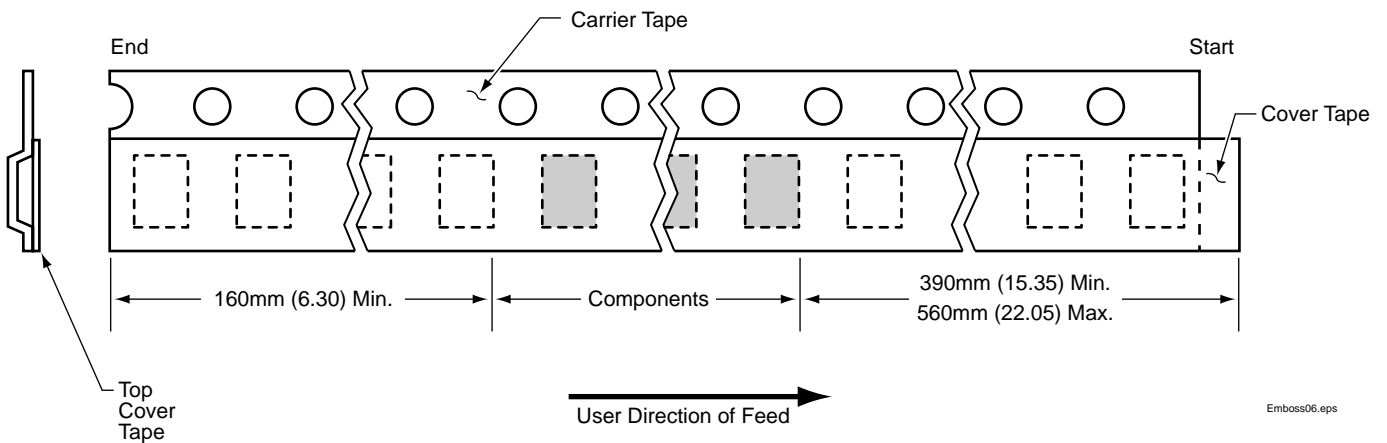
Tape Camber (Top View)



Allowable camber to be 1mm/100mm nonaccumulative over 250mm.

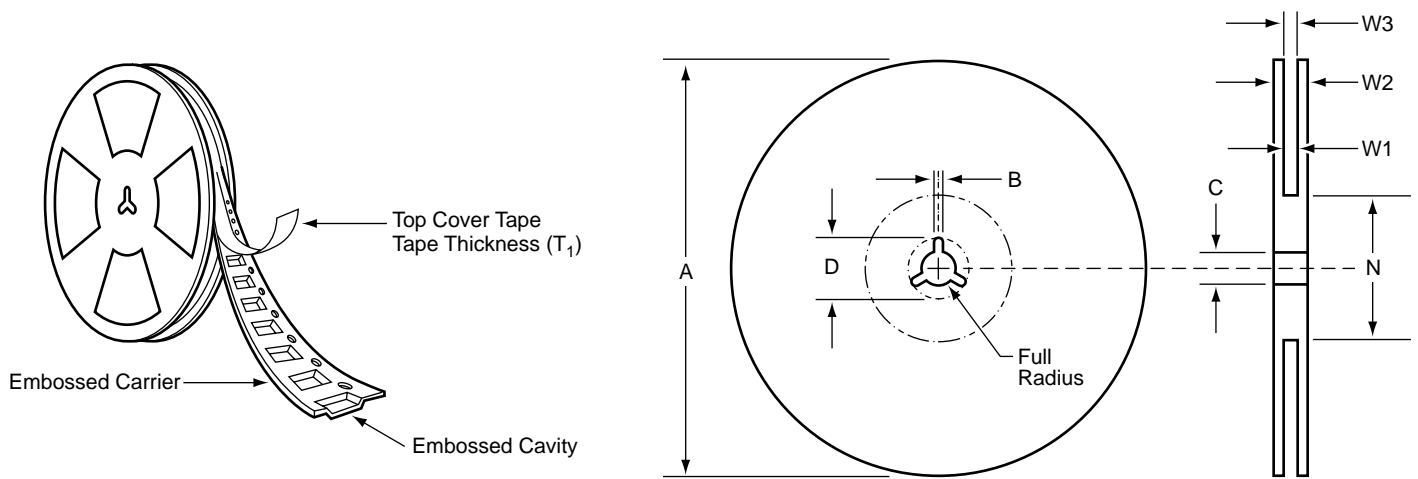
Emboss05.eps

Tape Leader and Trailer Dimensions



Emboss06.eps

Reel Dimension



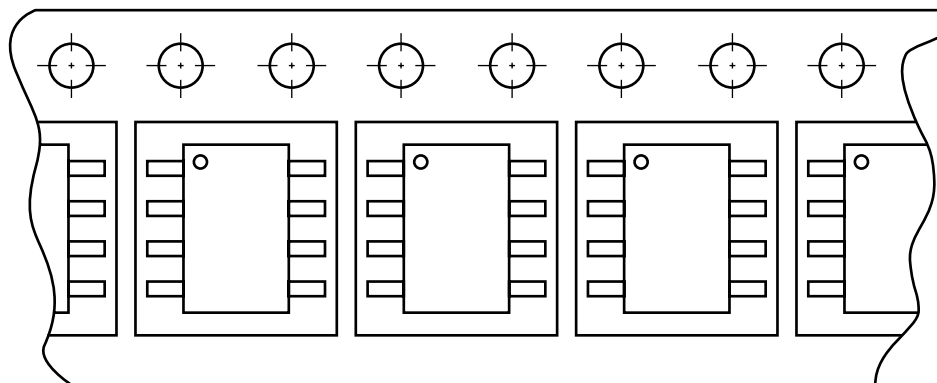
Emboss03.eps

Tape Size	A Max.	B Min.	C	D Min.	N Min.	W1	W2 Max.	W3
8mm	330 (12.992)	1.5 (0.059)	13.0 ± 0.20 (0.512 ± 0.008)	20.2 (0.795)	50 (1.969)	8.4 + 1.5 - 0.0 (0.331 + 0.059 - 0.0)	14.4 (0.567)	7.9 Min. (0.311) 10.9 Max. (0.0429)
12mm						12.4 + 2.0 - 0.0 (0.488 + 0.078 - 0.0)		18.4 (0.724)

ELD/B_101.eps

Tape Layout

→
User Direction of Feed



Emboss02.eps

IMP, Inc.
Corporate Headquarters
2830 North First Street
San Jose, CA 95134
Main: 408.432.9100
Sales: 408.434.1277
Fax: 408.434.1215
E-mail: info@impinc.com
Web: www.impweb.com

Asia Pacific Area Sales Office
Philip Wong
 IMP, Inc.
 391A Orchard Road
 #12-01, Ngee Ann City Tower A
 Singapore 238873
 Tel: 65.838.5046 x225
 Fax: 65.235.9340
 E-mail: philipw@impinc.com

Eastern Area Sales
Jerry DaBell
 IMP, Inc.
 2830 North First Street
 San Jose, CA 95134
 Tel: 408.434.1452
 Fax: 408.434.1215
 E-mail: dabell@impinc.com

Central Area Sales
Ron Laugesen
 IMP, Inc.
 2830 North First Street
 San Jose, CA 95134
 Tel: 408.434.1420
 Fax: 408.434.1215
 E-mail: ronl@impinc.com

Western Area Sales
Moiz Khambaty
 IMP, Inc.
 2830 North First Street
 San Jose, CA 95134
 Tel: 408.434.1206
 Fax: 408.434.1215
 E-mail: moiz@impinc.com

IMP Foundry Services
Moiz Khambaty
 IMP, Inc.
 2830 North First Street
 San Jose, CA 95134
 Tel: 408.434.1206
 Fax: 408.434.1215
 E-mail: moiz@impinc.com
 Web: www.impweb.com

IMP Foundry Services
Sandra Taber
 IMP, Inc.
 2830 North First Street
 San Jose, CA 95134
 Tel: 408.434.1426
 Fax: 408.434.1215
 E-mail: staber@impinc.com

North American Representatives
Alabama
BITS, Inc.
 Huntsville, AL
 Tel: 256.534.4020
 Fax: 256.534.0410
 Web: www.bits1.com

Alaska
ELREPCO - Northwest
 Beaverton, OR
 Tel: 503.520.1900
 Fax: 503.520.1906

Arizona
NELCO TWO Company
 Chandler, AZ
 Tel: 602.726.2334
 Fax: 602.726.2338

Arkansas
Kruvand Associates, Inc.
 Richardson, TX
 Tel: 972.437.3355
 Fax: 972.680.8854
 Web: www.kruvand.com

Austin, TX
 Tel: 512.219.9441
 Fax: 972.680.8854

California: Northern
Quorum Technical Sales
 Santa Clara, CA
 Tel: 408.980.0812
 Fax: 408.748.1163

Sacramento Reno Area
Quorum Technical Sales
 Paradise, CA
 Tel: 530.877.5772
 Fax: 530.699.4007

California: Southern
Spectrum Rep Company
 Westlake Village
 Tel: 818.706.2919
 Fax: 818.706.2978

Rancho Santa Margarita, CA
 Tel: 949.766.6700
 Fax: 949.766.6701

Mission Viejo, CA
 Tel: 949.367.3132
 Fax: 949.367.3133

Canada
Manitoba, Ontario, Quebec,
Prince Edward Island, New
Brunswick, Newfoundland,
Nova Scotia
Polar Components, Inc.
 Dorval, Quebec
 Tel: 514.683.3141
 Fax: 514.683.3966

Kanata, Ontario
 Tel: 613.592.8807
 Fax: 613.592.6310

Woodbridge, Ontario
 Tel: 416.410.3377
 Fax: 416.410.0056

British Columbia and Alberta
ELREPCO - Northwest.
 Redmond, WA
 Tel: 425.885.5880
 Fax: 425.882.0642

Colorado
PromoTech Sales
 Denver, CO
 Tel: 303.692.8484
 Fax: 303.692.8416

Connecticut
R.J. Bell Controls, Inc.
 Nashua, NH
 Tel: 603.882.6984
 Fax: 603.882.9049
 www.bellcontrols.com/about.htm

Delaware
Astrorep Mid Atlantic, Inc.
 Warminster, PA
 Tel: 215.957.9580
 Fax: 215.957.9583
 Web: www.astrorep.com

Florida
Marathon Technical Sales
 Orlando, FL
 Tel: 407.872.5775
 Tel: 800.713.9156
 Fax: 407.872.0535
 Web: www.marathontech.com

Melbourne, FL
 Tel: 477.728.7706
 Fax: 407.952.8725
 Web: www.marathontech.com

St. Petersburg, FL
 Tel: 727.894.3603
 Fax: 727.894.3804
 Web: www.marathontech.com

Fort Lauderdale, FL
 Tel: 954.527.4949
 Fax: 954.527.4115
 Web: www.marathontech.com

Georgia
BITS, Inc.
 Norcross, GA
 Tel: 770.564.5599
 Fax: 770.564.5588
 Web: www.bits1.com

Illinois
Northern Illinois Area
 Horizon Technical Sales, Inc.
 Downers Grove, IL
 Tel: 630.852.2500
 Fax: 630.852.2520

Southern Illinois Area
Central Tech Sales, Inc.
 St. Louis, MO
 Tel: 314.878.6336
 Fax: 314.878.6550

Indiana
Schillinger Associates, Inc.
 Kokomo, IN
 Tel: 765.457.7241
 Fax: 765.457.7732

Iowa
Matrix Marketing Group
 Bloomington, MN
 Tel: 612.835.6977
 Fax: 612.835.6822

Kansas
Central Tech Sales, Inc.
 St. Louis, MO
 Tel: 314.878.6336
 Fax: 314.878.6550

Kentucky
Schillinger Associates, Inc.
 Kokomo, IN
 Tel: 765.457.7241
 Fax: 765.457.7732

Louisiana
Kruvand Associates, Inc.
 Richardson, TX
 Tel: 972.437.3355
 Fax: 972.680.8854
 Web: www.kruvand.com

Austin, TX
 Tel: 512.219.9441
 Fax: 972.680.8854

Maine
R.J. Bell Controls, Inc.
 Nashua, NH
 Tel: 603.882.6984
 Fax: 603.882.9049
 www.bellcontrols.com/about.htm

Maryland
Astrorep Mid Atlantic, Inc.
 Warminster, PA
 Tel: 215.957.9580
 Fax: 215.957.9583
 Web: www.astrorep.com

Massachusetts
R.J. Bell Controls, Inc.
 Nashua, NH
 Tel: 603.882.6984
 Fax: 603.882.9049
 www.bellcontrols.com/about.htm

Mexico

Juarez Mexico Area
Kruvand Associates, Inc.
 El Paso, TX
 Tel: 951.881.9626
 Fax: 951.881.9628
 Web: www.kruvand.com

Guadalajara Mexico Area

Kruvand Associates, Inc.
 Co. Vallarta Poniente, C.P.
 Mexico
 Tel: 52.3.615.9944
 Fax: 52.3.630.1975
 Web: www.kruvand.com

Monterrey Mexico Area

Kruvand Associates, Inc.
 Col. Del Valle, C.P. Mexico
 Tel: 52.8.335.88.67
 Fax: 52.8.335.10.65
 Web: www.kruvand.com

Michigan

Schillinger Associates, Inc.
 Kokomo, IN
 Tel: 765.457.7241
 Fax: 765.457.7732

Minnesota

Matrix Marketing Group
 Bloomington, MN
 Tel: 612.835.6977
 Fax: 612.835.6822

Mississippi

BITS, Inc.
 Huntsville, AL
 Tel: 256.534.4020
 Fax: 256.534.0410
 Web: www.bits1.com

Missouri

Central Tech Sales, Inc.
 St. Louis, MO
 Tel: 314.878.6336
 Fax: 314.878.6550

Montana

NELCO TWO Company
 Boise, ID
 Tel: 208.343.9171
 Fax: 208.343.9170

Nebraska

Central Tech Sales, Inc.
 St. Louis, MO
 Tel: 314.878.6336
 Fax: 314.878.6550

New Hampshire

R.J. Bell Controls, Inc.
 Nashua, NH
 Tel: 603.882.6984
 Fax: 603.882.9049
www.bellcontrols.com/about.htm

New Jersey

Northern New Jersey Area
Astrorep New York, Inc.
 Babylon, NY
 Tel: 631.422.2500
 Fax: 631.422.2504
 Web: www.astrorep.com

Southern New Jersey Area

Astrorep Mid Atlantic, Inc.
 Warminster, PA
 Tel: 215.957.9580
 Fax: 215.957.9583
 Email:
100710.546@compuserve.com
 Web: www.astrorep.com

New Mexico

NELCO TWO Company
 Albuquerque, NM
 Tel: 505.293.1399
 Fax: 505.293.1011

New York

Metro
Astrorep New York, Inc.
 Babylon, NY
 Tel: 631.422.2500
 Fax: 631.422.2504
 Web: www.astrorep.com

Upstate

Quality Components
 Manlius – Main office
 Tel: 315.682.8885
 Fax: 315.682.2277

North Carolina

Eastern Area
BITS, Inc.
 Raleigh, NC
 Tel: 919.807.1000
 Fax: 919.807.1001
 Web: www.bits1.com

Western Area

BITS, Inc.
 Charlotte, NC
 Tel: 704.540.8185
 Fax: 704.540.8183
 Web: www.bits1.com

North Dakota

Matrix Marketing Group
 Bloomington, MN
 Tel: 612.835.6977
 Fax: 612.835.6822

South Dakota

Matrix Marketing Group
 Bloomington, MN
 Tel: 612.835.6977
 Fax: 612.835.6822

Ohio

The Lyons Corporation
 Dayton, OH
 Tel: 937.278.0714
 Fax: 937.278.3609

Oklahoma

Kruvand Associates, Inc.
 Broken Arrow, OK
 Tel: 918.258.1445
 Fax: 918.258.0894
 Web: www.kruvand.com

Oregon

ELREPCO - Northwest

Beaverton, OR
 Tel: 503.520.1900
 Fax: 503.520.1906

Pennsylvania

Eastern Area
Astrorep Mid Atlantic, Inc.
 Warminster, PA
 Tel: 215.957.9580
 Fax: 215.957.9583
 Web: www.astrorep.com

Western Area

The Lyons Corporation

Dayton, OH
 Tel: 937.278.0714
 Fax: 937.278.3609

Puerto Rico

Marathon Technical Sales
 Mayaguez, PR
 Tel: 787.831.4050
 Fax: 787.831.4250
 Web:
www.marathontech.com

Rhode Island

R.J. Bell Controls, Inc.
 Nashua, NH
 Tel: 603.882.6984
 Fax: 603.882.9049
www.bellcontrols.com/about.htm

South Carolina

BITS, Inc.
 Charlotte, NC
 Tel: 704.540.8185
 Fax: 704.540.8183
 Web: www.bits1.com

Tennessee

Eastern Area
BITS, Inc.
 Charlotte, NC
 Tel: 704.540.8185
 Fax: 704.540.8183
 Web: www.bits1.com

Western Area

BITS, Inc.
 Huntsville, AL
 Tel: 256.534.4020
 Fax: 256.534.0410
 Web: www.bits1.com

Texas

Kruvand Associates, Inc.
 Richardson, TX
 Tel: 972.437.3355
 Fax: 972.680.8854
 Web: www.kruvand.com

Austin, TX

Tel: 512.219.9441
 Fax: 512.219.1932
 Web: www.kruvand.com

El Paso, TX

Tel: 915.881.9626
 Fax: 915.881.9628
 Web: www.kruvand.com

North Houston Area

Kruvand Associates, Inc.
 Houston, TX
 Tel: 281.890.9766
 Fax: 281.890.7955
 Web: www.kruvand.com

South Houston Area

Kruvand Associates, Inc.
 Sugar Land, TX
 Tel: 281.980.0787
 Fax: 281.980.8426
 Web: www.kruvand.com

Vermont

R.J. Bell Controls, Inc.
 Nashua, NH
 Tel: 603.882.6984
 Fax: 603.882.9049
www.bellcontrols.com/about.htm

Virginia

Astrorep Mid Atlantic, Inc.
 Charlottesville, VA
 Tel: 804.293.7717
 Fax: 804.293.3447
 Web: www.astrorep.com

Washington

ELREPCO - Northwest
 Redmond, WA
 Tel: 425.885.5880
 Fax: 425.882.0642

Washington D.C.

Astrorep Mid Atlantic, Inc.
 Warminster, PA
 Tel: 215.957.9580
 Fax: 215.957.9583
 Web: www.astrorep.com

Wisconsin

Eastern Area
Horizon Technical Sales, Inc.
 Hartford, WI
 Tel: 262.670.6776
 Fax: 262.670.6778

Western Area

Matrix Marketing Group
 Bloomington, MN
 Tel: 612.835.6977
 Fax: 612.835.6822

Wyoming

NELCO TWO Company
 Boise, ID
 Tel: 208.343.9171
 Fax: 208.343.9170

Products are distributed in the U.S. by **Jaco Electronics, Inc.**

Jaco Corporate Headquarters

145 Oser Avenue
 Hauppauge, NY 11788
 Tel: 516.273.5500
 TOLL FREE: 800.989.JACO
 E-mail: info@jacoelectronics.com
 Internet: www.jacoelectronics.com

Eastern Region

NY, N. NJ, MA, CT, VT,
 ME, Canada, S. NJ, DE, NC,
 SC, TN, MS, AL, GA, KY, FL

Jaco Electronics, Inc.

145 Oser Avenue
 Hauppauge, NY 11788
 Tel: 631.273.5500
 Fax: 631.273.5799

Jaco Electronics, Inc.

1053 East Street
 Tewksbury, MA 01876
 Tel: 978.640.0010
 Fax: 978.640.0755
 E-mail: jacomass@aol.com

Jaco Electronics, Inc.

1191 E. Newport Center Dr.
 Deerfield Beach, FL 33442
 Tel: 954.425.0304
 Fax: 954.425.8077
 E-mail: jacofla@mindspring.com

Jaco Electronics, Inc.

5204 Greens Dairy Road
 Raleigh, NC 27616
 Tel: 919.876.7767
 Fax: 929.876.6964
 E-mail: jacose@mindspring.com

MidAtlantic Region

PA, MD, WV, VA, DE

Jaco Electronics, Inc.

River Center
 10260 Old Columbia Road
 Columbia, MD 21046
 Tel: 410.995.6620
 Fax: 410.995.6032
 E-mail: jacomd@mindspring.com

Southwest Region

S. CA, NV, AZ

Jaco Electronics, Inc.

2282 Townsgate Road
 Westlake, CA 91361
 Tel: 805.495.9998
 Fax: 805.494.3864
 E-mail: jacowest@earthlink.net

Jaco Electronics, Inc.

22815 Savi Ranch Pkwy Ste. E
 Yorba Linda, CA 92887
 Tel: 714.283.8185
 Fax: 714.283.8191
 E-mail: jacococ@earthlink.net

Jaco Electronics, Inc.

7940 Silverton Ave. Ste. 214
 San Diego, CA 92126
 Tel: 858.689.1082
 Fax: 858.689.0190
 E-mail: jacosandiego@earthlink.net

Northwest Region

N. CA, MT, WY, CO, WA, OR,
 ID, UT

Jaco Electronics, Inc.

4010 Moorpark Ave, Ste. 201
 San Jose, CA 95117
 Tel: 408.261.6700
 Fax: 408.261.6717
 E-mail: jacosj@pacbell.net

Jaco Electronics, Inc.

4900 SW Griffith Dr, Ste. 250
 Beaverton, OR 97005
 Tel: 503.626.1439
 Tel: 800.245.JACO
 Fax: 503.626.0979
 E-mail: info@jacopacificnw.com

Jaco Electronics, Inc.

17220 127th Place N.E., Ste. 300
 Woodinville, WA 98072
 Tel: 425.481.3372
 Tel: 800.245.JACO
 Fax: 425.481.1664
 E-mail: macsz28@worldnet.att.net

Central Region

TX, OK, KS, LA, AR, W. MO,
 NE, MN, ND, SD, IA, WI, IL,
 IN, MI, E. MO

Jaco Electronics, Inc.

1209 N. Glenville Drive
 Richardson, TX 75081
 Tel: 972.234.5565
 Fax: 972.238.7068
 E-mail: jacotx@flash.net

Jaco Electronics, Inc.

2120-A Braker Lane
 Austin, TX 78758
 Tel: 512.835.0220
 Fax: 512.339.9252
 E-mail: jacoaus@mindspring.com

Jaco Electronics, Inc.

101 E. Commerce Drive
 Schaumburg, IL 60173
 Tel: 847.884.6620
 Fax: 847.884.7573
 E-mail: jheerhold@jacoelectronics.com

Jaco Electronics, Inc.

2401 Pilot Knob Road, Suite 120
 Mendota Heights, MN 55120
 Tel: 800.844.5226
 Tel: 651.452.7464
 Fax: 651.452.7502
 E-mail: jacomn@usinternet.com

IMP, Inc.
Corporate Headquarters
 2830 North First Street
 San Jose, CA 95134
Main: 408.432.9100
Sales: 408.434.1277
Fax: 408.434.1215
E-mail: info@impinc.com

Internet: www.impweb.com

Asia Pacific Area Sales Office
Philip Wong
IMP, Inc.
 391A Orchard Road
 #12-01, Ngee Ann City Tower A
 Singapore 238873
Tel: 65-838.5046 x225
Fax: 65.235.9340
E-mail: philipw@impinc.com

Australia
Arrow Electronics Australia Pty Ltd.
 Headquarters
 9 Bastow Place
 Mulgrave VIC 3170
 Australia
Tel: 61.3.9574.9300
Fax: 61.3.9561.2148
E-mail: simpson@arwnet.com.au
Web: www.arrow.com.au

169 Unley Rd
 1st Floor, Ste. 16
 Unley SA 5061
 Australia
Tel: 618.232.3922
Fax: 618.232.3929
Web: www.arrow.com.au

17 Bowen Bridge Rd
 Unit 43
 Herston QLD 4006
 Australia
Tel: 61.7.3216.0770
Fax: 61.7.3216.0772
Web: www.arrow.com.au

64 Canning Hwy, Ste. 1
 Victoria Park WA 6100
 Australia
Tel: 61.9.472.3855
Fax: 61.9.470.3273
Web: www.arrow.com.au

Level 4, 5 Belmore Street
 Burnwood NSW 2134
 Australia
Tel: 61.2.9745.1400
Fax: 61.2.9745.1401
Web: www.arrow.com.au

Belgium
Tekelec Airtronic B.V.
 Ypsilon House, Engelandlaan
 310
 2711 DZ Zoetermeer
 Netherlands
Tel: 31.79.3461430
Fax: 31.79.3417504
E-mail: len.grootcholten@tekelec.nl
Web: www.tekelec.nl

China
Wuhan P&S Electronics Co. Ltd.
 15 Shuo Dao Quan Road
 Wuhan, Hubei 430079
 P.R.C.
Tel: 86.27.87493500
86.27.87493506
Fax: 86.27.87491166
Web: www.p8s.com

Beijing
Tel: 86.10.62549897
Fax: 86.10.62536518
Web: www.p8s.com

Shanghai
Tel: 86.21.64712494
Fax: 86.21.64714208
Web: www.p8s.com

Shenzhen
Tel: 86.755.3245517
Fax: 86.755.3269613
Web: www.p8s.com

Chengdu
Tel: 86.28.5575657
Fax: 86.28.5563631
Web: www.p8s.com

Nanjing
Tel: 86.25.6618571
Fax: 86.25.6509932
Web: www.p8s.com

Wuhan
Tel: 86.27.87862631
Fax: 86.27.87862632
Web: www.p8s.com

Xi'an
Tel: 86.29.5214247
Fax: 86.29.5218840
Web: www.p8s.com

Croatia/Slovenia
HT-Eurep d.o.o.
 F.E.R. Unska 3
 Berislavi 8
Tel: 38.512.302.454
Fax: 38.512.302.454
E-mail: hteurep@cadcam.hg

Czech Republic/Slovak Republic
HT-Eurep s.r.o.
 Svetova 10
 18000 Prague 8
 Czech Republic
Tel: 42.2.66.31.30.53
Fax: 42.2.684.00.80
E-mail: risa@comaphte.cz

Denmark
Dan-Contact A/S
 Brogaardsvej 48
 DK-2820 Gentofte
 Denmark
Tel: 45.39.68.36.33
Fax: 45.39.68.33.62
E-mail: office@dan-contact.dk

France
A2M
 5 Rue Carle Vernet
 92315 Sevres Cedex
 France
Tel: 33.1.46.23.79.00
Fax: 33.1.46.23.79.23
E-mail: jmpeyresblanquesa2m@tekelec.fr
Web: www.tekelec.fr

Germany
Tekelec Airtronic GmbH
 Kapuzinerstrasse 9
 80337 Munich 2
 Germany
Tel: 49.89.5164.503
Fax: 49.89.5164.305

Hong Kong
EIL Company Limited
 Unit A, 9/F., V GA Building,
 532 Castle Peak Road, Kowloon
 Hong Kong
Tel: 852.2741.6811
Fax: 852.2370.9297

Hungary
HT-Electronic KFT
 Nepfurdo U. 19/F
 H-1138 Budapest
 Hungary
Tel: 36.1.3395219
Fax: 36.1.3395219
E-mail: hteurep@elender.hu

India
Teamasia Greaves Semiconductors Limited
 Industrial Development Area
 Patancheru 502 319
 Medak Dist.
 Andhra Pradesh
 India
Tel: 91.8455.42032
91.8455.42033
Fax: 91.8455.42070
E-mail: team_cv@satyam.net.in

Bangalore
 Cell Tel: 98450.48101

Mumbai
Tel: 91.2226.71524
Tel: 91.2226.74913
Fax: 91.2226.52853
Fax: 91.2226.77850

New Delhi
Tel: 91.1137.30554
 (8 lines)
Fax: 91.1133.17593

Ireland
Unique-Memec
 Block H, Lock Quay,
 Clare Street
 Limerick
 Ireland
Tel: 353.61.316116
Fax: 353.61.316117

Israel
IES Electronics Agencies Ltd.
 32 Ben Gurion Street
 Ramat-Gan 52573
 Israel
Tel: 972.3.7530776
Fax: 972.3.7530701

Japan
Teksel Co., Ltd.
 Headquarters
 TBC, 2-27-10 Higashi,
 Shibuya-Ku, Toyko, 150-0011
 Japan
Tel: 81.35.467.9105
Fax: 81.35.467.9346
E-mail: imp@teksel.co.jp
Web: www.teksel.co.jp

Osaka Branch
 Shin Osaka Meikou Building
 4-3-12 Miyahara, Yodogawa-Ku,
 Osaka-Shi 532-0003
 Japan
Tel: 81.66.399.5000
Fax: 81.66.399.0999
Web: www.teksel.co.jp

Nagoya Branch
 KS Building
 3-18-28 Marunouchi, Naka-Ku
 Nagoya-Shi 460-0002
 Japan
Tel: 81.52.971.3611
Fax: 81.52.971.3622
Web: www.teksel.co.jp

Nagano Branch
 OAU Building
 2-1-22 Tenjin, Ueda-Shi
 Nagano 386-0025
 Japan
Tel: 81.268.23.7411
Fax: 81.268.23.7412
Web: www.teksel.co.jp

Kyusyu Branch
 BDai 5 Hakata Kaisei Building
 1-18-25 Hakata Eki-Higashi,
 Hakata-Ku Fukuoka-Shi
 Fukuoka 812-0013
 Japan
 Tel: 81.92.531.7277
 Fax: 81.92.531.9960
 Web: www.teksel.co.jp

Korea
Acetronix
 5th Floor Namhan Bldg.
 76-42 Hannam-Dong
 Yongsan-Ku, Seoul
 Korea
 Tel: 822.796.4561
 Fax: 822.796.4563

AIN Electronics, Inc.
 Rm. 203, Blk A, Sin-Sung
 Officetel
 1588-1 Seocho-Dong, Seocho-ku
 Seoul 135-120
 Korea
 Tel: 822.581.1741
 Fax: 822.581.1740

WaveTech Korea, Co., Ltd
 3F, Cest Bien Bldg., 542-4
 Shinsa-dong, Kangnam-ku
 Seoul 135-120
 Korea
 Tel: 822.545.1231
 Fax: 822.545.1245
 Web: www.wavetech.co.kr

Liechtenstein
Computer Controls AG
 Neunbrunnenstr. 55
 CH-8050 Zurich
 Switzerland
 Tel: 41.1.308.66.66
 Fax: 41.1.308.66.55

Malaysia
Sabre Technologies Pte. Ltd.
 104 Boon Keng Road
 #07-07 Kallang Basin
 Industrial Estate
 Singapore 1233
 Tel: 65.2932003
 Fax: 65.2930661

Netherlands
Tekelec Airtronic B.V.
 Ypsilon House
 Engelandlaan 310
 2711 DZ Zoetermeer
 2701 Ac Zoetermeer
 Netherlands
 Tel: 31.79.3461430
 Fax: 31.79.341750

New Zealand
Arrow Electronics Australia Pty Ltd.
 19 Pretocia Street
 P.O. Box 31186
 Lower Hutt 6009
 New Zealand
 Tel: 64.4.570.2260
 Fax: 64.4.566.2111

Poland
HT-Eurep
 c/o WG Electronics
 ul. Jarazca 10
 00-387 Warszawa
 Poland
 Tel: 48.22.621.77.04
 Fax: 48.22.628.48.50
 E-mail: wghte@polbox.pl

Singapore
Sabre Technologies Pte. Ltd.
 104 Boon Keng Road
 #07-07 Kallang Basin
 Industrial Estate
 Singapore 339775
 Tel: 65.2932003
 Fax: 65.2930661

Spain
Tekelec Espana S.A.
 General Aranaz, 49
 28027 Madrid
 Spain
 Tel: 34.91.320.4160
 Fax: 34.91.320.1018

Sweden
Martinsson Elektronik AB
 Instrumentvagen 16
 Box 9060
 S-12609 HagerSte.n
 Sweden
 Tel: 46.8.744.0300
 Fax: 46.8.744.7922

Switzerland
Computer Controls AG
 Neunbrunnenstr. 55
 8050 Zurich
 Switzerland
 Tel: 41.1.308.66.66
 Fax: 41.1.308.66.55
 E-mail: kolbiez@ccontrols.ch

Rte. De Lausanne 17
 1400 Yuerdon-les-Bains
 Switzerland
 Tel: 41.24.423.8200
 Fax: 41.24.423.8205

Taiwan
Maxtek Technology Co., Ltd.
 3F, No. 197, Sec. 4,
 Nanking E. Road, Taipei
 Taiwan
 Tel: 886.2.713.0209
 886.2.718.2084
 Fax: 886.2.712.6780

Thailand
Massworld Co., Ltd.
 72/30 Ban Phunravee 1
 Rama 3 Road
 Yannawa Bangkok 10120
 Thailand
 Tel: 66.2.2944930
 Fax: 66.2.2942074

United Kingdom
Sequoia Technology Ltd.
 (a member of the TEKELEC
 group)

Tekelec House, Back Lane,
 Spencers Wood, Reading,
 Berkshire RG7 1PW
 United Kingdom
 Tel: 44.1189.769.014
 Fax: 44.1189.769.070

For any location not listed,
 please direct inquiries to IMP
 sales.

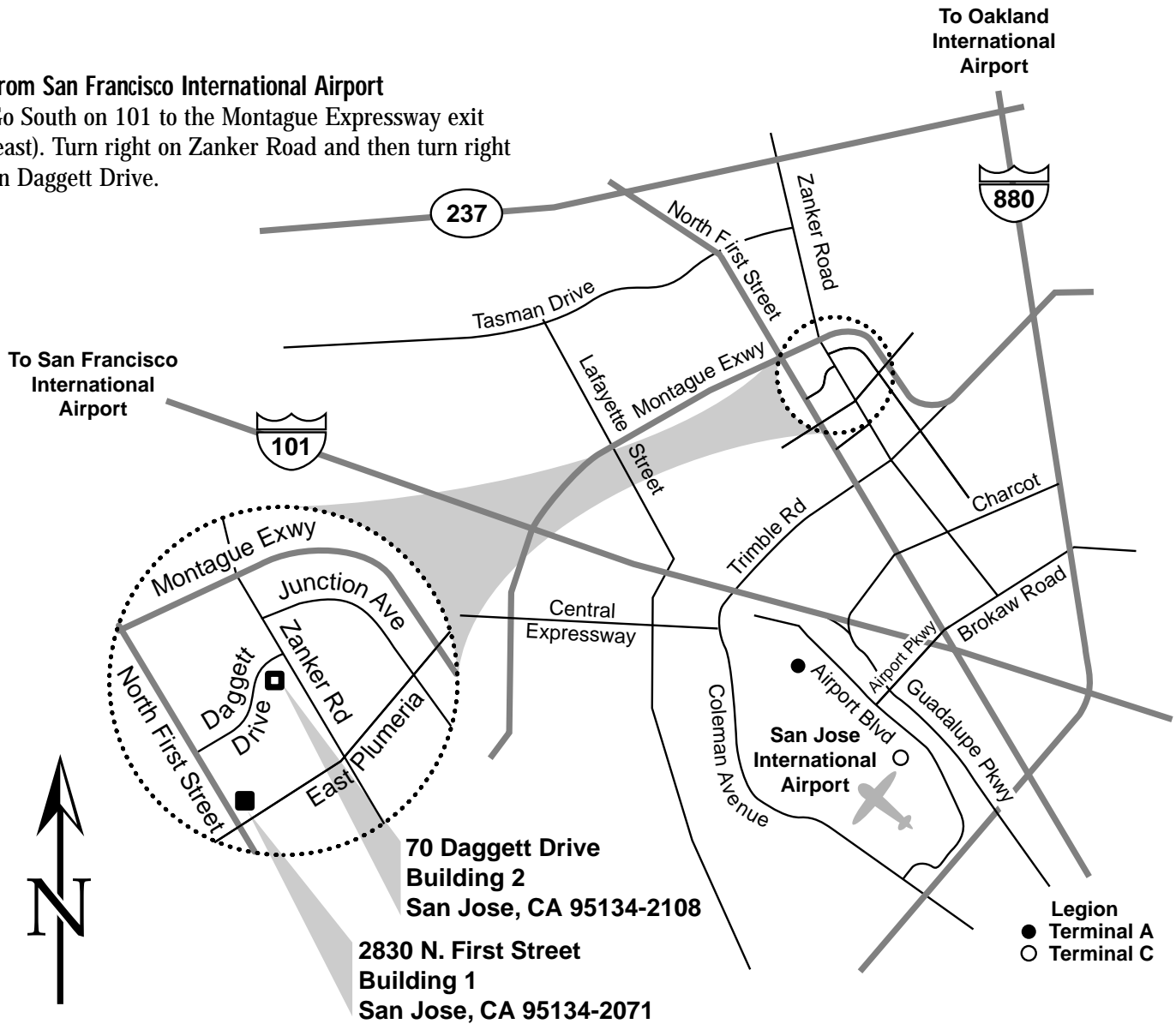
REPLIST 01-10-2000

From San Francisco International Airport

Go South on 101 to the Montague Expressway exit (east). Turn right on Zanker Road and then turn right on Daggett Drive.

From Oakland International Airport

Go South on 880 and turn right at the Montague Expressway exit, move left out of the car pool lane. Turn left on Zanker Road and then turn right on Daggett Drive.



For Additional Directions

408-432-9100

From San Jose International Airport

From Terminal Drive go to Airport Blvd. From Airport Blvd., turn onto Airport Pkwy. (Airport Pkwy becomes Brokaw Road after 101). Turn left on North First Street, then turn right on Daggett Drive.

Quality Priority

Quality in everything we do is a fundamental IMP commitment. Quality may not be sacrificed for any other priority. Before any action is taken, the effect on quality as seen by employees and by customers must be considered.

Product Quality Conformance

Products and services for our customers will conform to all requirements. Products will meet performance specifications. Services will be complete, meet described requirements, and will be in a format appropriate for the customer's use. If a specification cannot be met in full, the customer will be advised and a new specification will be negotiated.

Product and Process Quality Improvement

All processes, manufacturing, manufacturing planning, customer service, product design and design of manufacturing processes shall utilize Total Quality Management concepts including Statistical Process Control techniques and designed experiments to ensure continual improvement of products and services.

Employee Responsibility

Each employee is responsible for performing their work correctly and completely. This responsibility for quality performance applies to all design work, development work, manufacturing work and to all supporting work. It applies to all employee levels. It cannot be abandoned or delegated. No one else can take responsibility.

IMP's Commitment of Support

IMP will provide the tools, the training, and the time necessary for employees to meet their responsibilities.

Employee Participation

IMP encourages all employees to take part in the open discussion, analysis and resolution of problems through participation in quality and productivity teams or through personal suggestions.



DNV Certification, Inc.

DET NORSKE VERITAS QUALITY SYSTEM CERTIFICATE

Certificate No. 96-HOU-AQ-8474

This is to certify that the Quality System
of

IMP INC.

at

2830 North First Street, San Jose, CA 95134 USA

Has been found to conform to Quality Standard:

ISO 9001, 1994

This Certificate is valid for the following products/service ranges:

**DESIGN AND MANUFACTURE OF ANALOG AND MIXED-SIGNAL INTEGRATED
CIRCUITS AND WAFER FABRICATION SERVICES**

Place and date:

Houston, Texas; 01 November 1996

for the Accredited Unit:
Det Norske Veritas Certification, Inc.
Houston, Texas, USA
DNV Management System Certification
The Netherlands

Garnett Davis
Management Representative
DNV Certification, Inc.



Accredited by
the RvA

This certificate is valid until:

08 August 1999

Initial Certification Date:

08 August 1996

Marc Bivona
Lead Auditor

Lack of fulfillment of conditions as set out in the Appendix may render this certificate invalid.

DET NORSKE VERITAS CERTIFICATION, INC., 18340 Park Ten Place, Suite 100, Houston, TX 77064 USA TEL: (713) 579-0035 FAX: (713) 643-2842

IMP offers higher performance, lower-power microprocessor supervisors that are pin compatible with devices from Dallas Semiconductor and Maxim Integrated Products. For the latest information visit www.impweb.com or send specific requests to info@impinc.com.

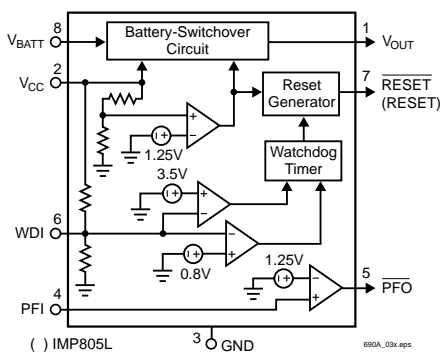
µP Supervisor Products: Low Power Alternatives to Maxim

Part Number	Threshold Voltage (V)	Backup Battery Switch	Watchdog Timer	Power Fail Monitor	Manual Reset	RESET Polarity
IMP690A	4.65	X	X	X		LOW
IMP692A	4.40	X	X	X		LOW
IMP705	4.65		X	X	X	LOW
IMP706	4.40		X	X	X	LOW
IMP707	4.65			X	X	L & H
IMP708	4.40			X	X	L & H
IMP802L	4.65	X	X	X		LOW
IMP802M	4.40	X	X	X		LOW
IMP805L	4.65	X	X	X		HIGH
IMP809	2.63 to 4.63					LOW
IMP810	2.63 to 4.63					HIGH
IMP811	2.63 to 4.63				X	LOW
IMP812	2.63 to 4.63				X	HIGH
IMP813L	4.65		X	X	X	HIGH

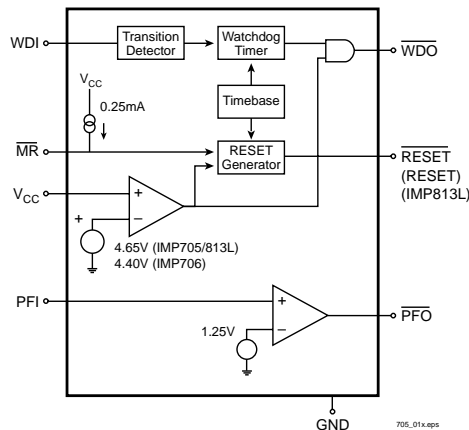
ELD/E_106

Block Diagrams

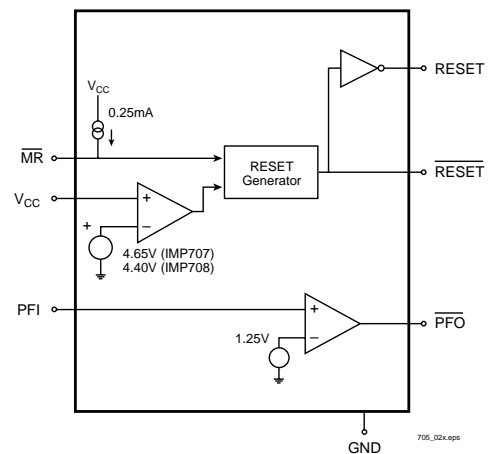
IMP690A, IMP692A, IMP802L,
IMP802M and IMP805L



IMP705, IMP706 and IMP813L



IMP707 and IMP708



µP Supervisor Products: Low Power Alternatives to Dallas Semiconductor

IMP Ordering Part Number	RESET Voltage (V)	RESET Tolerance (%)	RESET Time (ms)	RESET Polarity	Push-Pull Output Stage	Open Drain Output	8-Pin SO Package	TO-92 Package	SOT-23 Package	SOT-223 Package
IMP1810-5	4.620	5	150	LOW	X			X		
IMP1810-10	4.370	10	150	LOW	X			X		
IMP1810-15	4.120	15	150	LOW	X			X		
IMP1810R-5	4.620	5	150	LOW	X				X	
IMP1810R-10	4.370	10	150	LOW	X				X	
IMP1810R-15	4.120	15	150	LOW	X				X	
IMP1811-5	4.620	5	150	LOW		X		X		
IMP1811-10	4.350	10	150	LOW		X		X		
IMP1811-15	4.130	15	150	LOW		X		X		
IMP1811R-5	4.620	5	150	LOW		X			X	
IMP1811R-10	4.350	10	150	LOW		X			X	
IMP1811R-15	4.130	15	150	LOW		X			X	
IMP1812-5	4.620	5	150	HIGH	X			X		
IMP1812-10	4.350	10	150	HIGH	X			X		
IMP1812-15	4.130	15	150	HIGH	X			X		
IMP1812R-5	4.620	5	150	HIGH	X				X	
IMP1812R-10	4.350	10	150	HIGH	X				X	
IMP1812R-15	4.130	15	150	HIGH	X				X	
IMP1815-5	3.060	5	150	LOW	X			X		
IMP1815-10	2.880	10	150	LOW	X			X		
IMP1815-20	2.550	20	150	LOW	X			X		
IMP1815R-5	3.060	5	150	LOW	X				X	
IMP1815R-10	2.880	10	150	LOW	X				X	
IMP1815R-20	2.550	20	150	LOW	X				X	
IMP1816-5	3.060	5	150	LOW		X		X		
IMP1816-10	2.880	10	150	LOW		X		X		
IMP1816-20	2.550	20	150	LOW		X		X		
IMP1816R-5	3.060	5	150	LOW		X			X	
IMP1816R-10	2.880	10	150	LOW		X			X	
IMP1816R-20	2.550	20	150	LOW		X			X	
IMP1817-5	3.060	5	150	HIGH	X			X		
IMP1817-10	2.880	10	150	HIGH	X			X		
IMP1817-20	2.550	20	150	HIGH	X			X		
IMP1817R-5	3.060	5	150	HIGH	X				X	
IMP1817R-10	2.880	10	150	HIGH	X				X	
IMP1817R-20	2.550	20	150	HIGH	X				X	
IMP1233D-5	4.625	5	350	LOW		X		X		
IMP1233D-10	4.375	10	350	LOW		X		X		
IMP1233D-15	4.125	15	350	LOW		X		X		
IMP1233DZ-5	4.625	5	350	LOW		X				X
IMP1233DZ-10	4.375	10	350	LOW		X				X
IMP1233DZ-15	4.125	15	350	LOW		X				X
IMP1233M-55	4.625	5	350	LOW		X		X		
IMP1233M-5	4.375	10	350	LOW		X		X		
IMP1233M-3	2.720	15	350	LOW		X		X		
IMP1233MS-55	4.625	5	350	LOW		X	X			
IMP1233MS-5	4.375	10	350	LOW		X	X			
IMP1233MS-3	2.720	15	350	LOW		X	X			

ELD/B 107a.ees

USB Power Switches

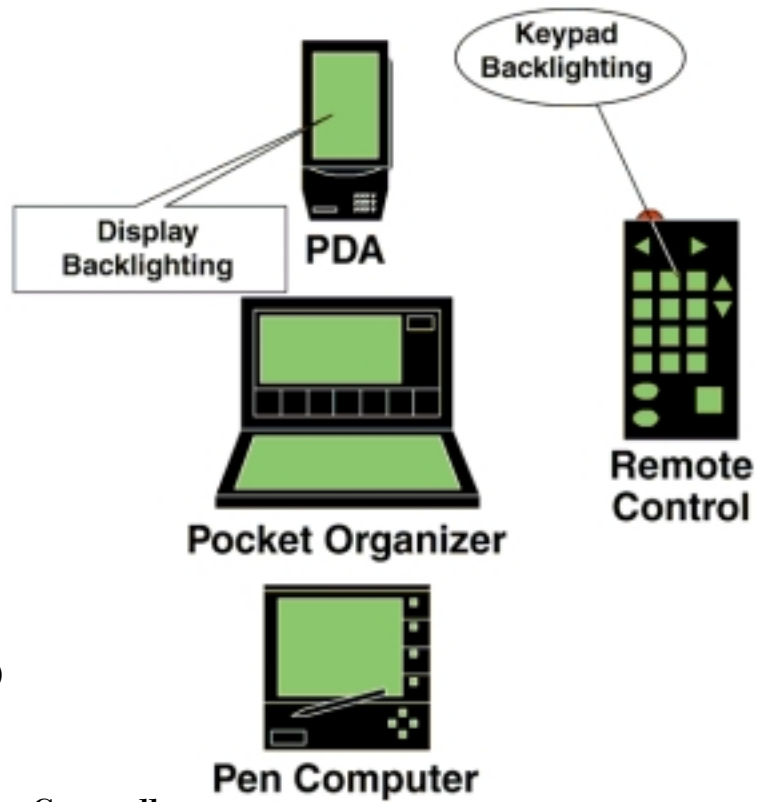
IMP offers a full complement of Universal Serial Bus (USB) power switches that are higher-performance equivalents to devices from Micrel.

Part Number	# of Switches	"ON" Resistance (mΩ)	Enable Polarity
IMP2525-1	1	140	HIGH
IMP2525-2	1	140	LOW
IMP2525A-1 Low ON Resistance	1	70	HIGH
IMP2525A-2 Low ON Resistance	1	70	LOW
IMP2526-1	2	140	HIGH
IMP2526-2	2	140	LOW
IMP2527-1	4	200	HIGH
IMP2527-2	4	200	LOW

ELD/B 108

EL Lamp Applications

- ◆ Pagers
- ◆ Caller ID
- ◆ Appliances
- ◆ Telephones
- ◆ Thermostats
- ◆ Weight Scales
- ◆ Cellular Phones
- ◆ Digital Compasses
- ◆ HPCs (Handheld PCs)
- ◆ Temperature Monitors
- ◆ Automotive Dashboards
- ◆ GPS Handheld Receivers
- ◆ PDAs (Personal Digital Assistants)
- ◆ Watches and Alarm Clocks
- ◆ Test and Medical Equipment
- ◆ TV/VCR/Audio/Cable Box Remote Controllers



Fold

Sample Requests and New Product Updates

Name: _____

Position: _____

Company: _____

Address: _____

City: _____ State/Province: _____

Zip Code: _____ Country: _____

Phone #: _____ Fax #: _____

Email Address: _____

IMP Part	Qty	IMP Part	Qty
IMP525EMA	_____	IMP560EMA	_____
IMP525ESA	_____	IMP560ESA	_____
IMP528EMA	_____	IMP803LG	_____
IMP528ESA	_____	IMP803IMA	_____

Please send me updates via:

- Postal Mail
- Email
- Postal Mail and Email

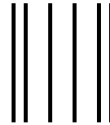
**Mail or
Fax to
408.434.0335**



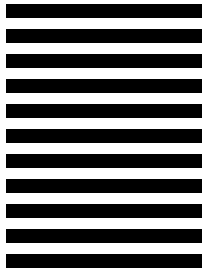
www.impweb.com
Phone: 408.432.9100

Tape

Fold



NO POSTAGE
NECESSARY
IF MAILED
IN THE
UNITED STATES



BUSINESS REPLY MAIL
FIRST-CLASS MAIL PERMIT NO. 1933 SAN JOSE CA

POSTAGE WILL BE PAID BY THE ADDRESSEE

**MS-200
CUSTOMER SERVICE
IMP INC
2830 N 1ST ST
SAN JOSE CA 95134-9887**





ISO 9001 Registered

IMP, Inc.
Corporate Headquarters
2830 N. First Street
San Jose, CA 95134-2071
Tel: 408-432-9100
Tel: 800-438-3722
Fax: 408-434-0335
e-mail: info@impinc.com
<http://www.impweb.com>

The IMP logo is a registered trademark of IMP, Inc.
All other company and product names are trademarks of their respective owners.

June 1999

© 1999 IMP, Inc.
Printed in USA
Part No.: ELDB
Document Number: ELDB-06-06/99